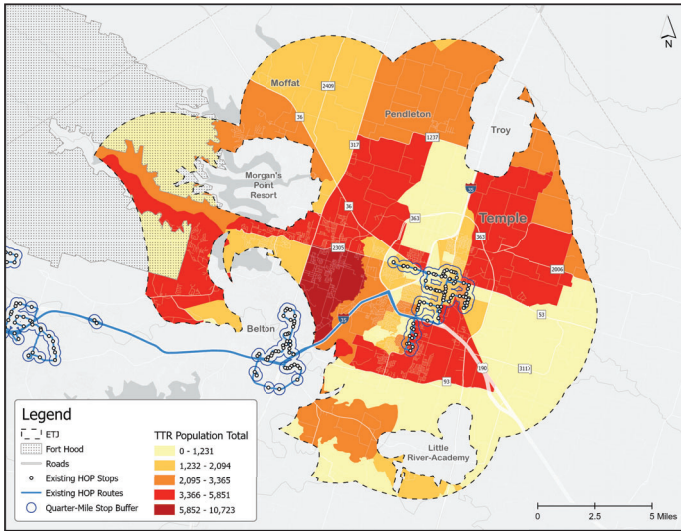
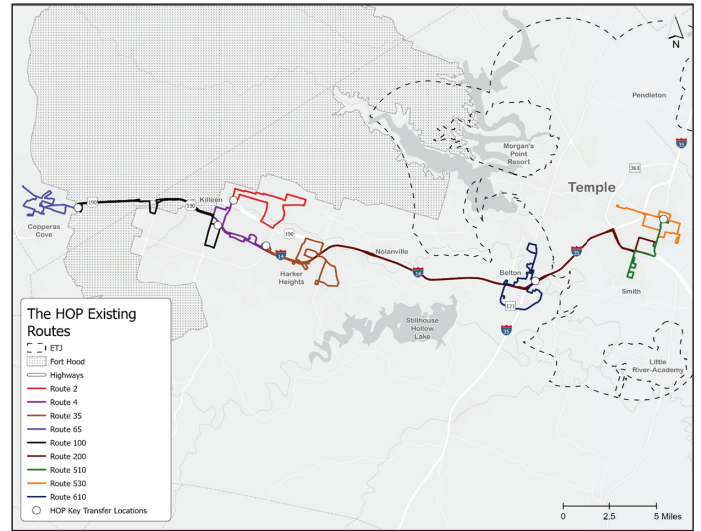


Transit

Target Transit Riders Served



Existing Routes



Transit Market Served by Existing System



Key Findings

1. The existing fixed route transit system in the study area is estimated to serve just over a third of the total population in the study area and just under half of all employment.
2. The highest levels of ridership activity tend to occur at major destinations such as transfer stations, medical facilities, supermarkets, and higher education facilities.
3. All of the HOP routes apart from the 200 Express route operate with headways of 60 minutes.
4. There are block groups with high levels of TTR around Temple and west-central Bell County south and east of Killeen/Harker Heights that fall outside of the existing system's service area.
5. The data analysis and feedback garnered through this study indicated that there is a transit service gap between central/east Temple and employment opportunities in the Industrial Park.
6. Although current plans for future growth in transit service are modest, Hill Country Transit has offered to work with the study team on alternative future scenarios.

Service Categories

