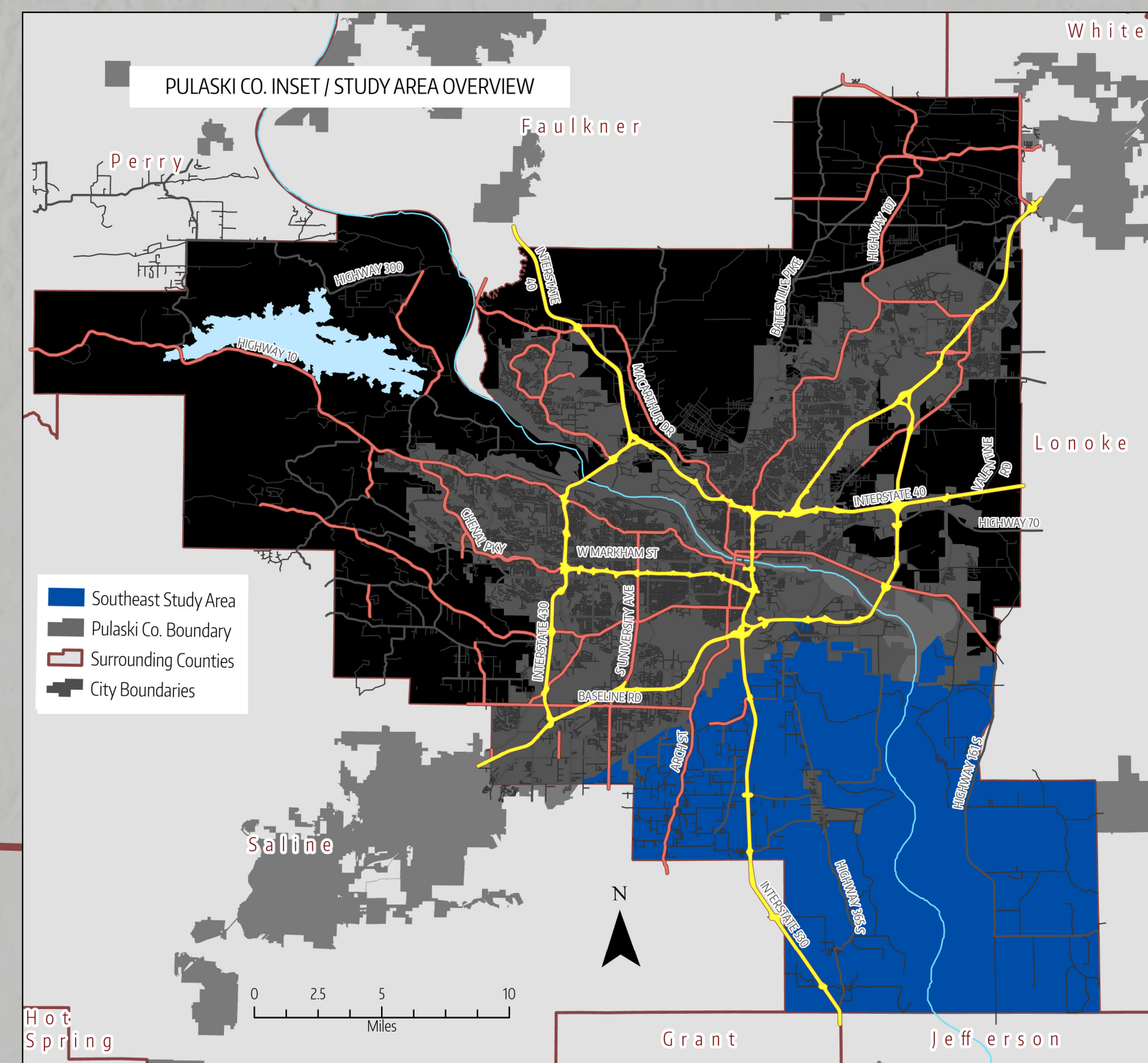
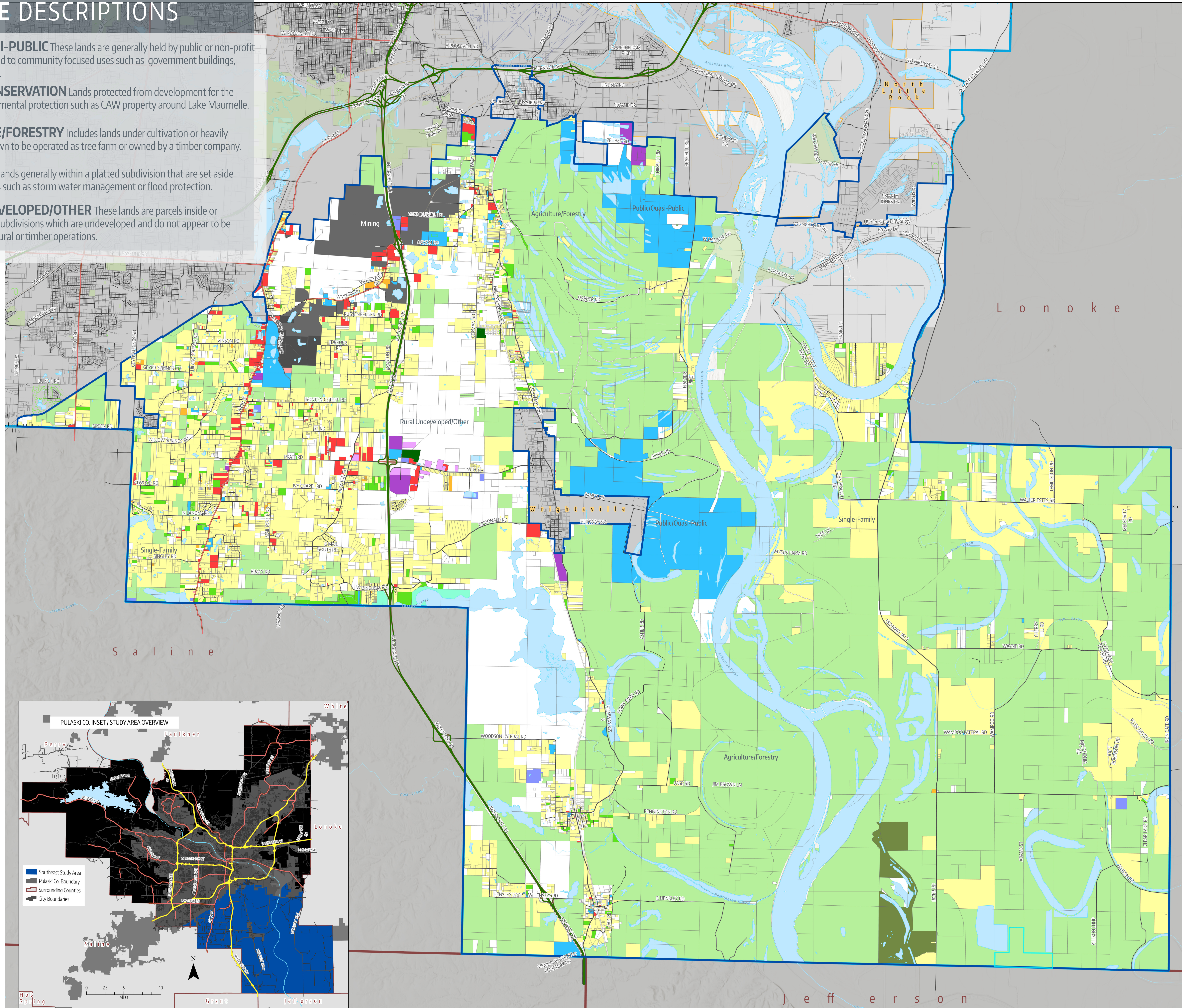


SUB AREA MAPS: SOUTHEAST

LAND USE DESCRIPTIONS

- PUBLIC/QUASI-PUBLIC** These lands are generally held by public or non-profit entities and devoted to community focused uses such as government buildings, churches, or camps.
- NATURAL CONSERVATION** Lands protected from development for the purpose of environmental protection such as CAW property around Lake Maumelle.
- AGRICULTURE/FORESTRY** Includes lands under cultivation or heavily forested lands known to be operated as tree farm or owned by a timber company.
- OPEN SPACE** Lands generally within a platted subdivision that are set aside for a variety of uses such as storm water management or flood protection.
- RURAL UNDEVELOPED/OTHER** These lands are parcels inside or outside of platted subdivisions which are undeveloped and do not appear to be large-scale agricultural or timber operations.

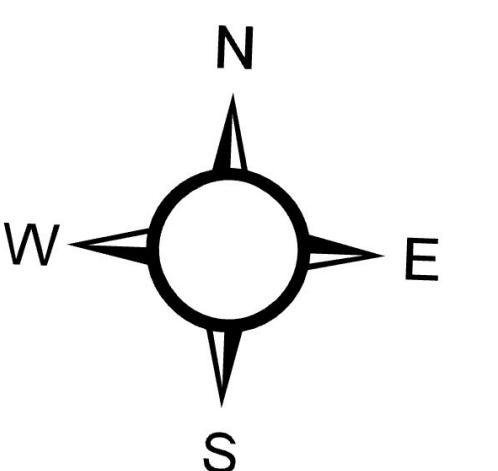


LEGEND

- | | | | | | |
|--------------|---|--------------------|----------------------|------------------------|----------------------------|
| Parcels | City | Freeway | Single-Family | Public / Quasi-Public | Landfill |
| Parks | Surrounding City | Principal Arterial | Multi-Family | Natural Conservation | Military |
| Golf Courses | Pulaski Co. Boundary | Minor Arterial | General - Commercial | Open Space | Transportation / Utilities |
| | Surrounding County Boundary | Collector & Local | Office | Agriculture / Forestry | Rural Undeveloped / Other |
| | Little Rock & North Little Rock Zoned Areas | Local | Quasi-Industrial | Recreation - Public | |
| | | | Industrial | Recreation - Private | |
| | | | | Mining | |



DATE: May 19th, 2023



SOUTHEAST PULASKI COUNTY

Southeast Pulaski County Sub Area Map and Area Demographics

POPULATION

| | |
|------|--------|
| 2000 | 12,081 |
| 2010 | 12,183 |
| 2020 | 11,588 |



POPULATION BY GENERATION

| | |
|-----------------------------------|-------|
| Gen Alpha (2017 or Later) | 5.7% |
| Gen Z (1999 - 2016) | 18.8% |
| Millennials (1981 - 1998) | 23.5% |
| Gen X (1965 - 1980) | 20.6% |
| Baby Boomers (1946 - 1964) | 25.3% |
| Greatest/Silent (1945 or Earlier) | 6.0% |

EDUCATION

| | |
|-------------------|-------|
| GED/Diploma | 86.6% |
| Some College | 42.9% |
| Bachelor's Degree | 13.2% |
| Graduate Degree | 3.5% |

RACE

| | |
|-------------------------|-------|
| White alone | 54.6% |
| Black alone | 31.8% |
| American Indian alone | 0.6% |
| Asian alone | 0.9% |
| Pacific Islanders alone | 0.1% |
| Other/2+ | 12.0% |