



I-30 DECK PARK PLANNING STUDY

Community Engagement Meeting #1
Little Rock, Arkansas
Pulaski County

AGENDA

-  Meeting Logistics
-  Meeting Materials
-  Comment Period & Additional Resources
-  Contact Us



MEETING LOGISTICS



Community Engagement Meeting #1

Monday, February 9, 2026
4:30 – 6:30 p.m.

CALS Main Library
Darragh Center – 5th Floor
100 Rock Street
Little Rock, AR

February 2026

S	M	T	W	T	F	S
1	2	3	4	5	6	7
8	9	10	11	12	13	14
15	16	17	18	19	20	21
22	23	24	25	26	27	28

MEETING MATERIALS



Station 1

- Why are We Having this Meeting?
- Study Location Map
- Study Overview
- Purpose and Need
- Frequently Asked Questions

Station 2

- Reconnecting Communities Pilot and Study Grants
- Feasibility and Funding
- Reconnecting Downtown

Station 3

- Site History
- Site Context
- What and Where are Deck Parks?

Station 4

- Public Engagement
- What's Next?
- Estimated Study Timeline

Station 5

- Public comment, input, and Feedback



STATION 1

Meeting Materials



PURPOSE OF THIS MEETING



Community Engagement Meeting #1

- Introduce concept of a Deck Park between 6th and 9th streets in Little Rock, Arkansas.
- Outline the schedule of the planning study.
- Present strategies to align with the city plans and programming.
- Open forum style with no formal presentation.
- Meeting materials at Stations 1-5.
- Study website available with all materials for future viewing at lri30deckpark.publicmtgs.com.

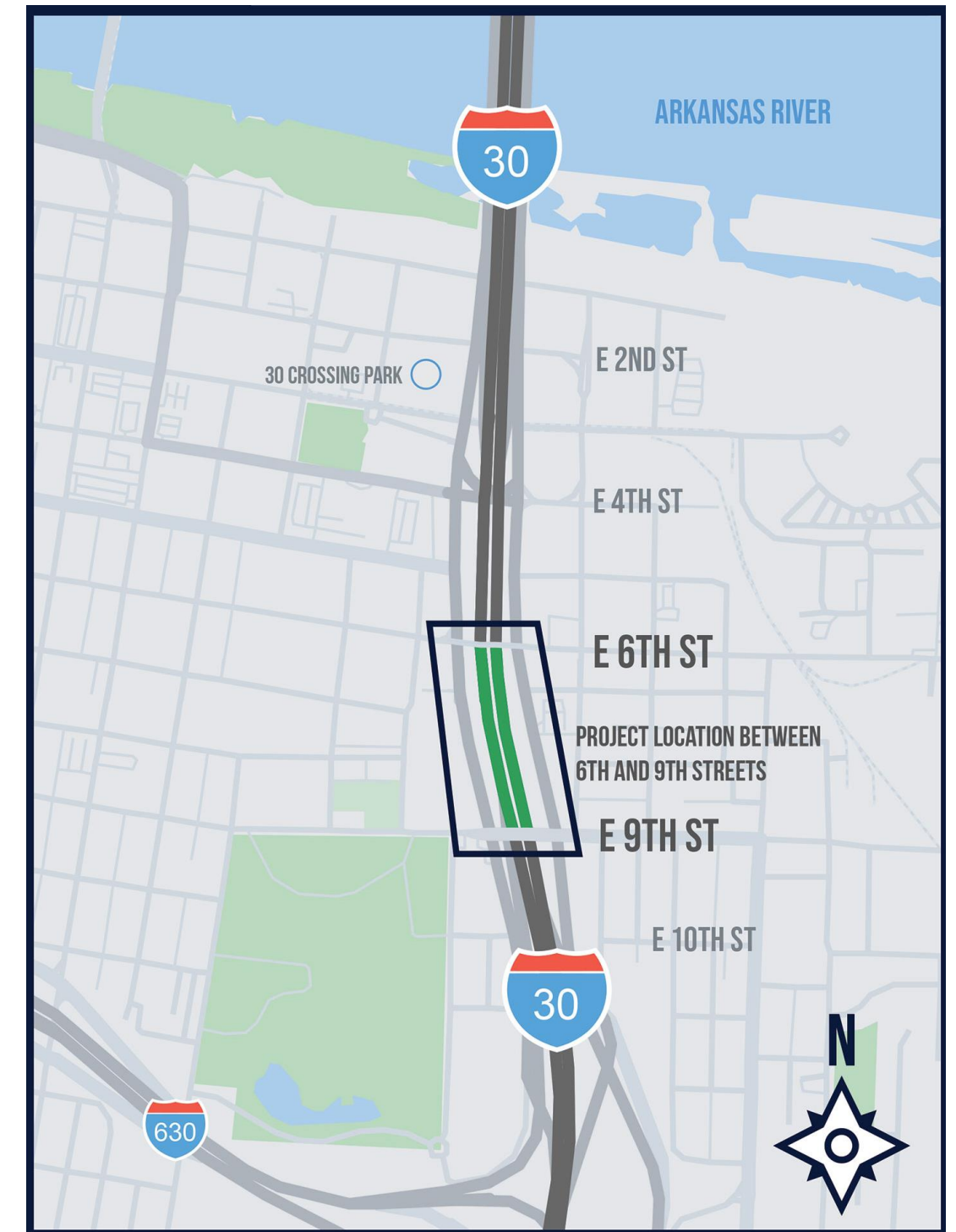


*To visit the study website,
scan the QR code above*

STUDY LOCATION MAP



- The I-30 Deck Park Planning Study area is between 6th and 9th streets in Little Rock, Arkansas.



STUDY OVERVIEW



Community
Input



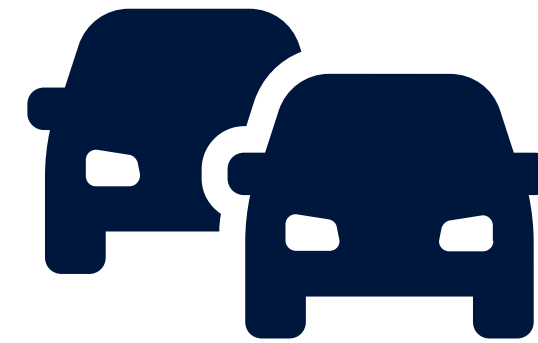
Open Forum
Community
Engagement
Meetings



Analyze Project
Costs



Impact Mitigation
and Evaluation
(PEL)



Traffic and
Mobility Study

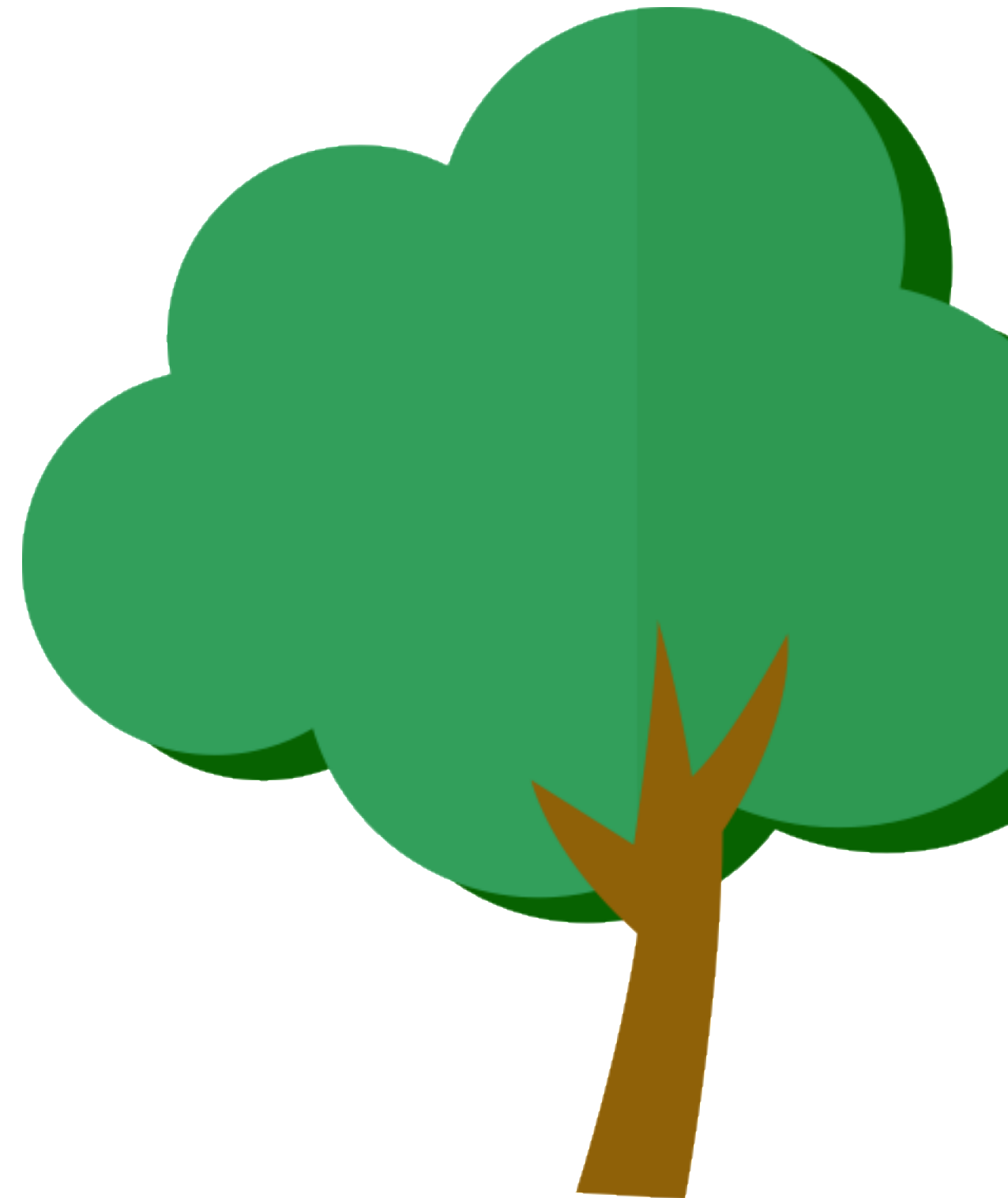


Feasibility Study,
Alternative
Evaluation, and
Conceptual Design
of Recommended
Alternative

STUDY PURPOSE AND NEED



- The initial draft *Purpose Statement* for the study is: To provide a Deck Park spanning across I-30 between 6th and 9th streets that will provide a safer and more desirable pedestrian/bicycle crossing over I-30 with amenities that would create a community gathering place and urban link to “bridge” the economic and social divide created by I-30.
- The complete Purpose and Need statement is available on the study website as well as on the Purpose and Need exhibit.



FREQUENTLY ASKED QUESTIONS (1 OF 2)



1) What is the “Deck Park”?

A deck park is a landscaped public space built on a structure over a highway that reconnects streets and neighborhoods separated by the roadway. You might also hear “highway cap” or “lid” as those are common synonyms.

2) What’s a “Planning and Environmental Linkages (PEL) Study”?

A PEL Study is a planning process recognized by the Federal Highway Administration (FHWA) that evaluates ideas early and documents decisions so they can be carried into the later federal environmental review. Using PEL helps streamline and inform the NEPA process and involves agencies and the public up front.

3) What is “NEPA”?

NEPA stands for the National Environmental Policy Act. It’s the federal process that studies environmental, community, and economic impacts before any federally funded projects can move forward. Work done during the PEL Study is intended to set up and accelerate the future NEPA phase.

4) What is a “Feasibility Study”?

It’s an early-stage analysis that asks: Can a deck park be built here, how might it be built, what would it cost (order-of-magnitude), and what benefits or challenges are expected? For this project, the team will develop and compare multiple alternatives (including a “no-build” option) and recommend one to advance.

5) What does “No-Build Alternative” mean?

The “no-build” option keeps things as they are. It’s included in comparisons so the public can see the costs and benefits of building the deck park versus making no change.

FREQUENTLY ASKED QUESTIONS (2 OF 2)



6) What is a “Conceptual Design” (or “Conceptual Engineering”)?

Conceptual design turns the recommended alternative into conceptual plans and drawings (layouts, structural concepts, safety systems, access, lighting, drainage) with enough detail to estimate cost and carry the project into NEPA and later design phases.

7) What is a “Cost Estimate,” and what does “planning-level” mean?

A planning-level cost estimate is a high-level, early estimate that covers design, construction, and operations & maintenance (O&M). It includes contingencies and is refined later as the design becomes more detailed.

8) Who develops the “Funding Strategy”?

The study will outline options for funding the design, construction, and long-term maintenance and operations of the project, and will include recommendations for funding sources, sequencing, and risk management.

9) What is the “Traffic & Mobility Study”?

This study looks at how people move today and, in the future, by car, bus, bike, or on foot, how safe those movements are, and how the deck park alternatives could affect intersections and travel patterns. Findings inform the alternatives and design.



STATION 2

Meeting Materials



RCP AND PLANNING STUDY GRANTS



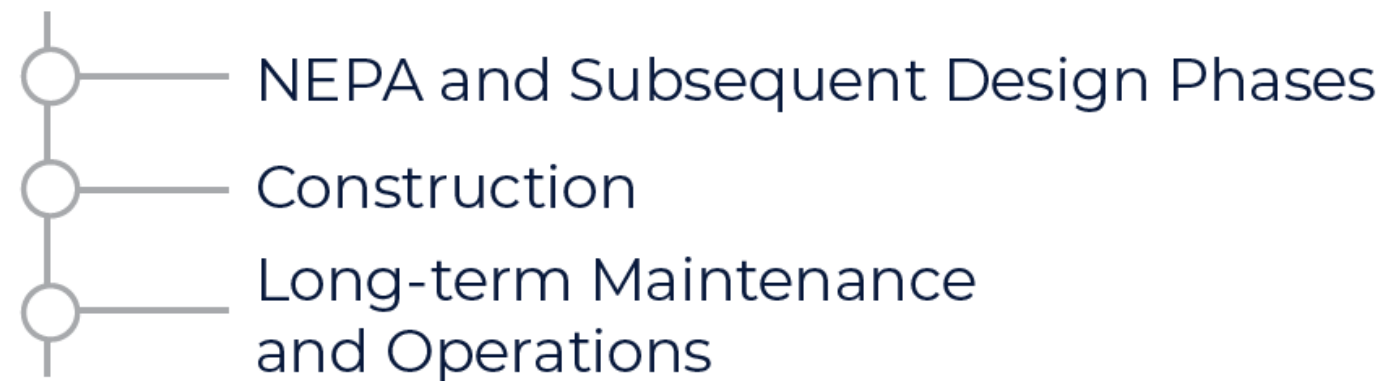
- Reconnecting Communities Pilot (RCP) Program: A U.S. DOT initiative to address impacts of past transportation projects.
- In 2024, the City of Little Rock entered into an agreement with the USDOT for \$2,000,000, the maximum planning grant amount awarded.
- Grant purpose: Planning study for a proposed deck park between 6th Street and 9th Street in Little Rock.
- Study coordination: Arkansas Department of Transportation (ARDOT) and Federal Highway Administration (FHWA).
- For additional information, visit www.transportation.gov/reconnecting.

FEASIBILITY AND FUNDING



- The City of Little Rock is evaluating the feasibility of constructing a Deck Park over I-30 between 6th Street and 9th Street as part of its USDOT-funded Reconnecting Communities Pilot (RCP) Planning Study.

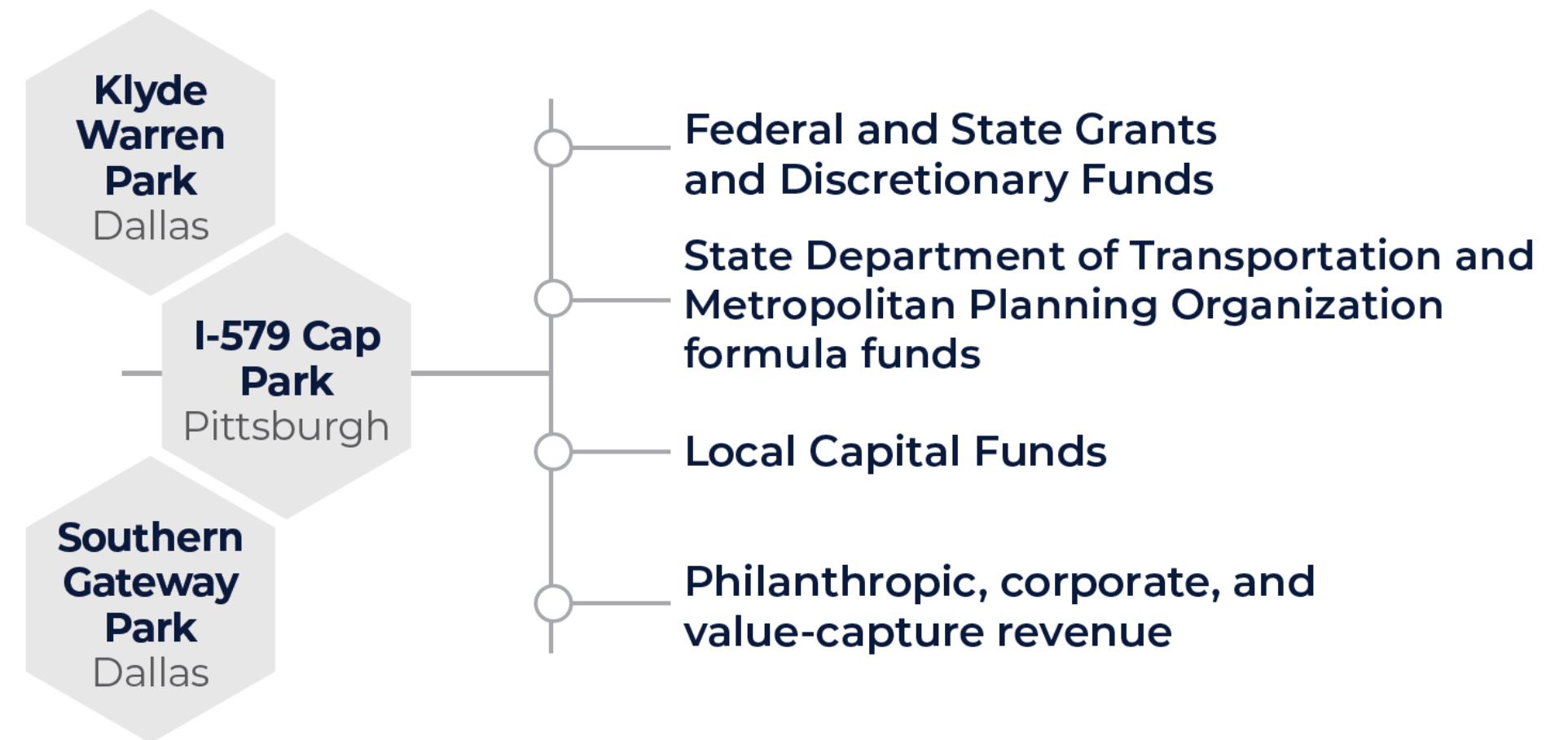
Planning Study will outline options for Funding:



Planning Study will recommend:



A blended funding approach is typical for:

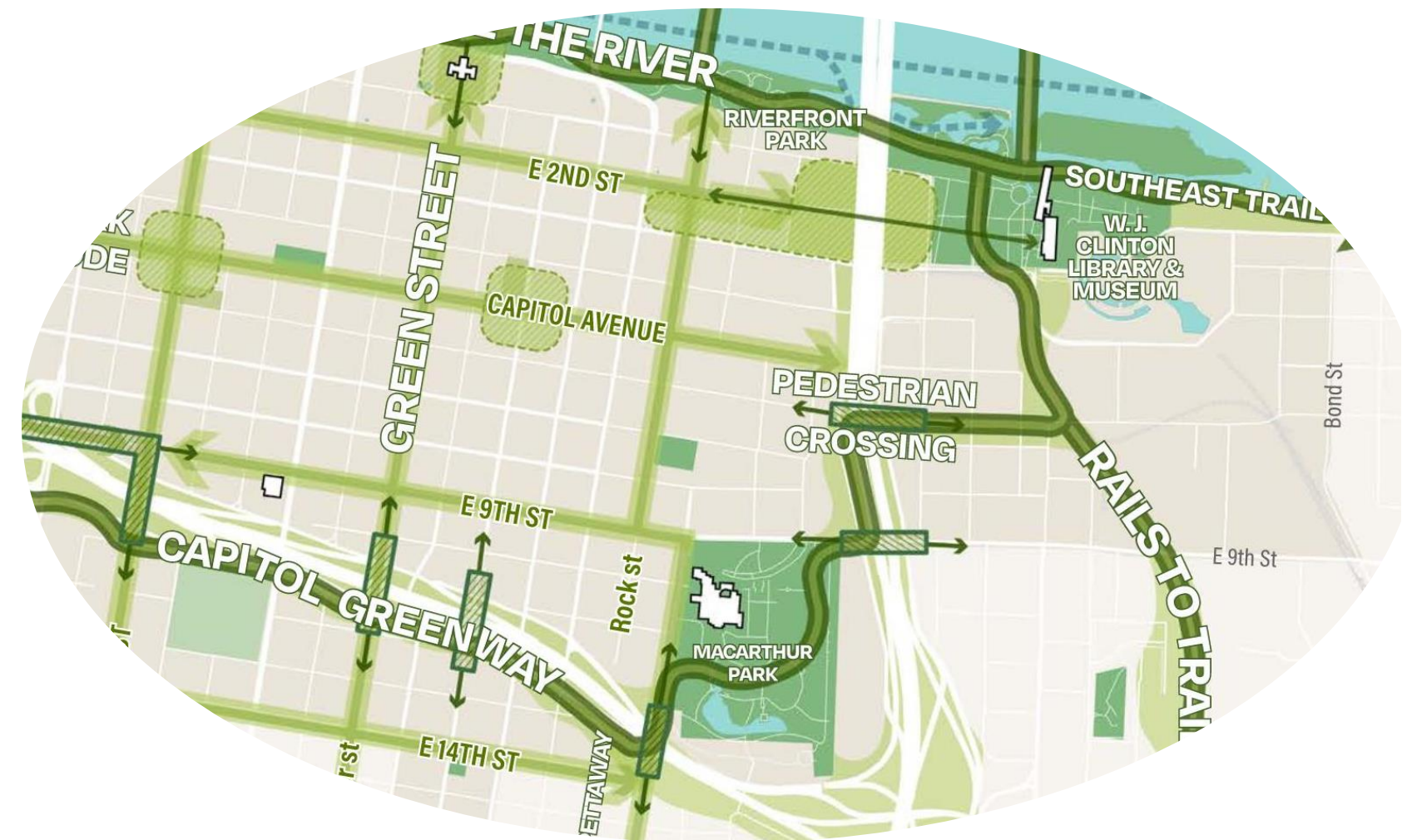


RECONNECTING DOWNTOWN



The **I-30 Deck Park** can support the framework, goals, and objectives defined in the **City of Little Rock's Downtown Master Plan (June 2024)**:

- Reconnects Urban Fabric
- Enhances Public Open Space
- Supports Mobility and Connectivity
- Catalyzes Economic Development
- Promotes Placemaking and Culture
- Encourages Downtown Residency Growth
- Improves Quality of Life
- Strengthens Gateway Presence
- Supports Future Trail and Open Space Networks





STATION 3

Meeting Materials

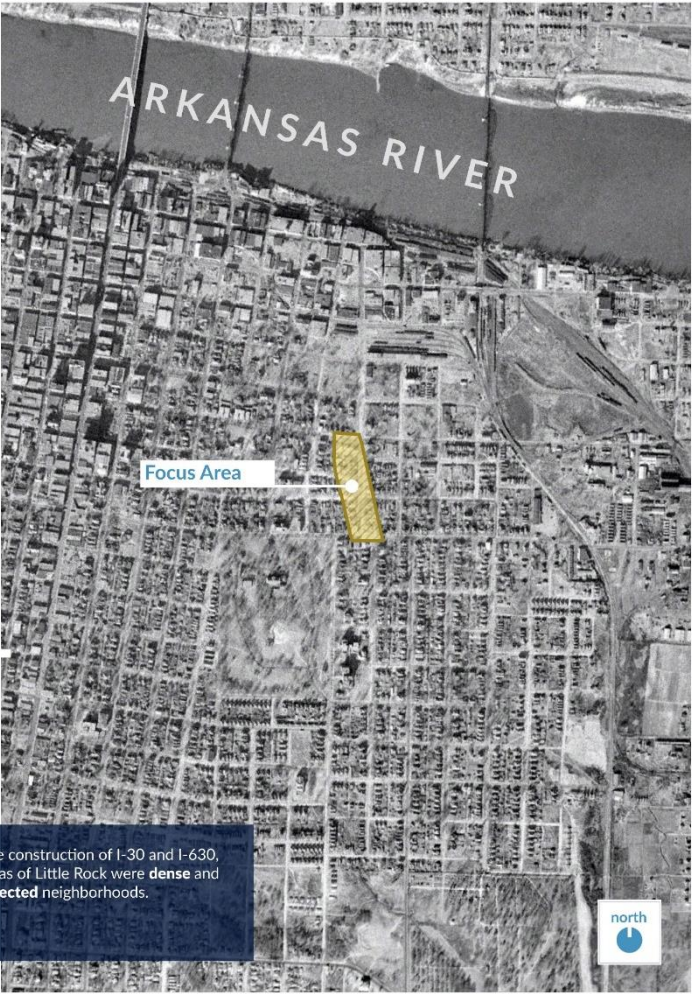


SITE HISTORY



1943 SITE HISTORY

Prior to Construction of I-30



Before the construction of I-30 and I-630, these areas of Little Rock were **dense** and **well connected** neighborhoods.



1943 Historic Aerial,
Courtesy of the City of Little Rock Planning Department.

1960 SITE HISTORY

Impact of I-30 Construction



The area highlighted in red indicates land acquired through eminent domain for the construction of I-30. A project that resulted in the physical division of Downtown Little Rock, altering its urban fabric.



1960 Historic Aerial,
Courtesy of the City of Little Rock Planning Department.

1970 SITE HISTORY

After I-30 & I-630 Expansion



This area highlights additional land acquired through eminent domain for the construction of I-630. As a result, hundreds of **businesses were lost** and **families were displaced**.



1970 Historic Aerial,
Courtesy of the City of Little Rock Planning Department.

2025 SITE HISTORY

Present Day

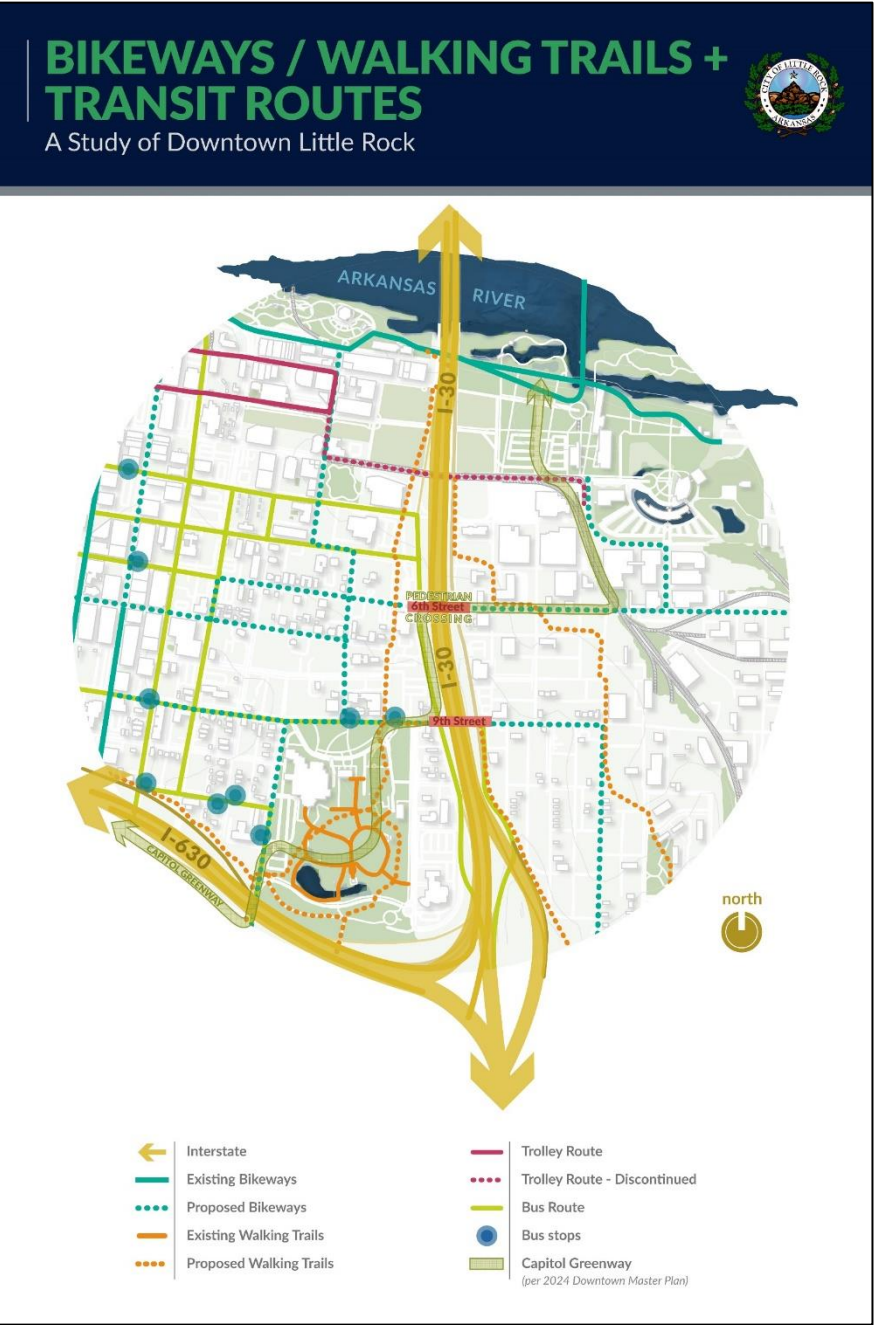
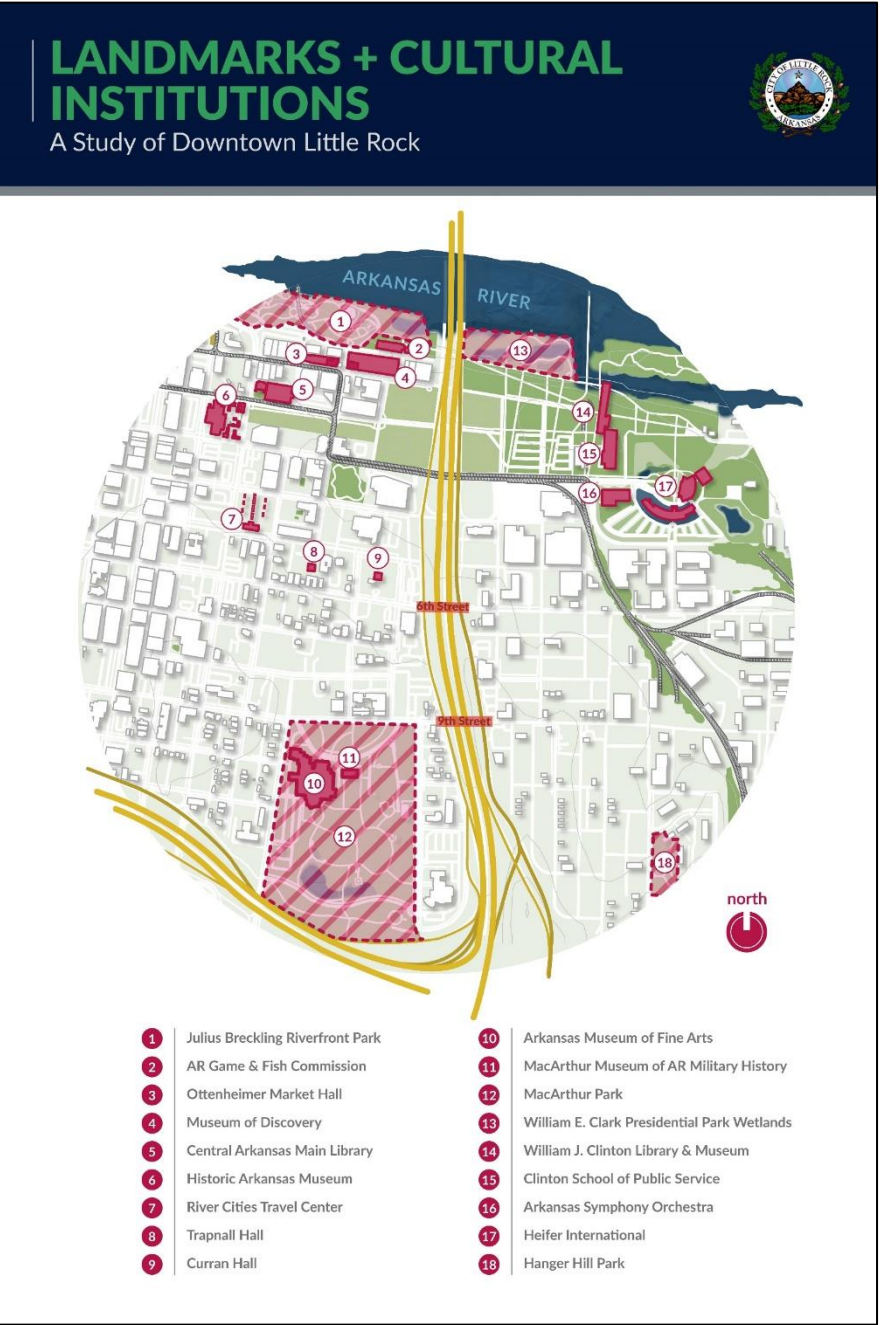
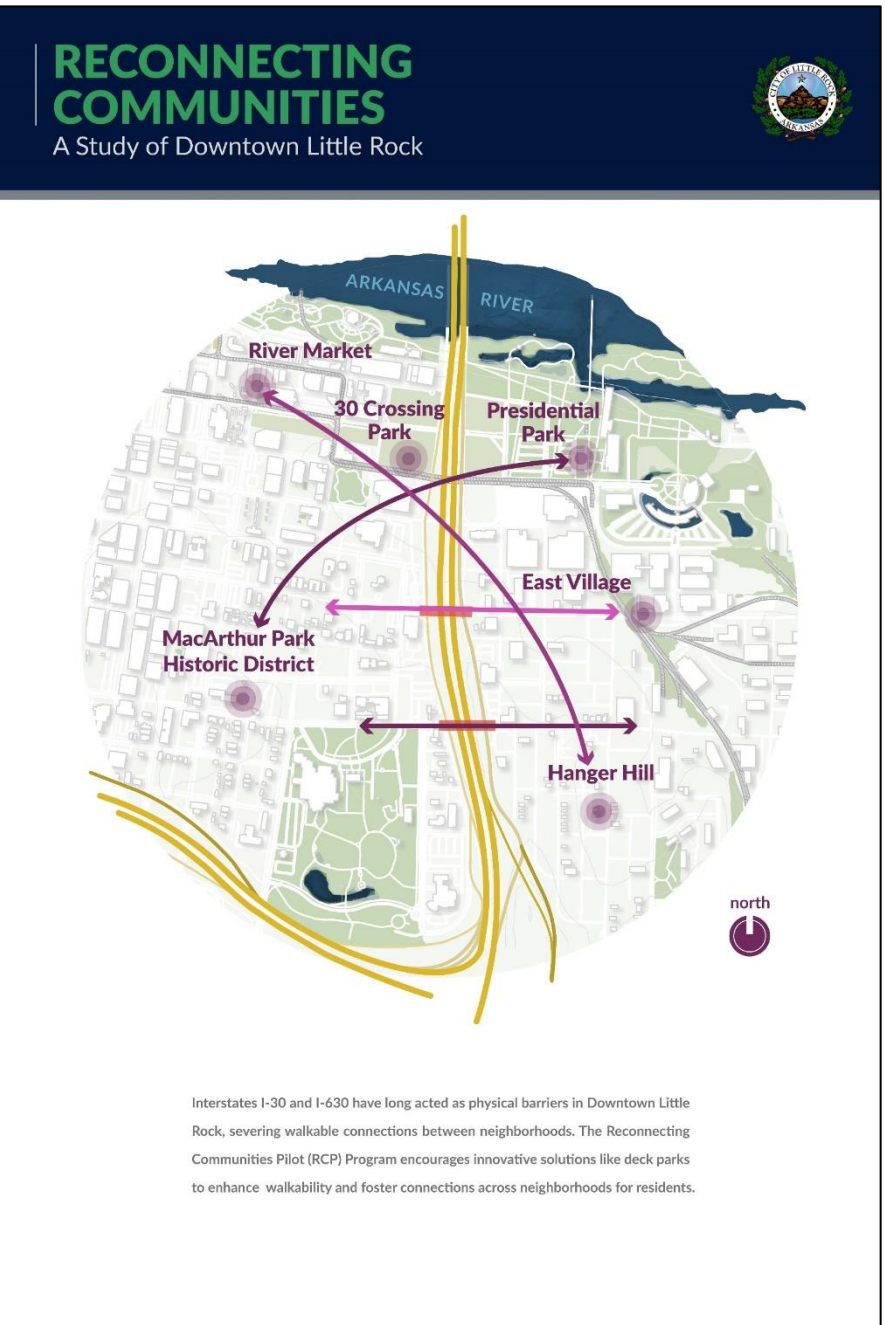


By introducing a deck park between the 6th and 9th Street bridges, this project creates a **critical opportunity to RECONNECT** communities previously divided.



2025 Aerial,
Courtesy of Google Earth.

SITE CONTEXT



WHAT IS A DECK PARK?



- An urban planning term for a park built atop or “decked over” a major transportation artery, such as an interstate highway. The goal is typically to create new green space and reconnect neighborhoods that were previously divided by the infrastructure.
- A deck park can also be called a “cap” or “lid” park.



Klyde Warren Park in Dallas

WHAT IS...A Deck Park?

Analyzing the Impact of Interstate Infrastructure



More Than a Park

A deck park is a public or civic space built on a structural “lid” over an existing roadway—most often an interstate or sunken highway. By spanning across the infrastructure below, a deck park reconnects neighborhoods that were once divided and reclaims land previously lost to transportation corridors. These parks can support green space, walking and biking paths, cultural programming, and community gathering areas—transforming infrastructure into an asset rather than a barrier.

URBAN HEAT ISLANDS



Interstates are major contributors to the Urban Heat Island effect, acting as massive radiators that absorb solar energy by day and release it by night. This leaves adjacent neighborhoods significantly hotter—often 5° to 10°F warmer—than the rest of the city, driving up energy bills and health risks.

- Energy Poverty: Residents living in these “heat zones” have to run air conditioning longer and harder, leading to higher utility bills. For low-income communities already struggling with costs, this is a significant barrier.

Deck Park Solution

- A park could cover this hot asphalt with a lush canopy of shade trees and grass, lowering ambient temperatures by 5–10°F.

AIR QUALITY



Open highways create a “pollution plume” of exhaust and micro-particles that drifts into nearby homes and schools, contributing to high rates of asthma and heart disease. This “invisible smog” disproportionately harms the communities immediately adjacent to the corridor.

Deck Park Solution

- The structure contains vehicle exhaust within the tunnel for controlled venting, while the dense new vegetation on top acts as a “green sponge,” actively filtering dust and particulates to create a cleaner breathing zone.

SOUND POLLUTION



While concrete divides a neighborhood physically, sound divides it socially. An interstate highway functions as a continuous “line source” of noise, generating a constant roar (75–80+ decibels) that extends for blocks.

This “acoustic wall” kills the “front porch” culture of a neighborhood. When you have to shout to be heard, people stop gathering outdoors.

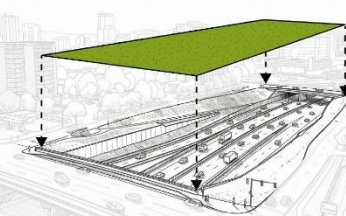
Deck Park Solution

- A deck park’s massive concrete and soil structure physically traps highway noise in the tunnel below. This instantly drops decibel levels from a “diesel roar” to a “library whisper,” allowing the community to speak, sleep, and gather in peace.

9th STREET BRIDGE

6th STREET BRIDGE

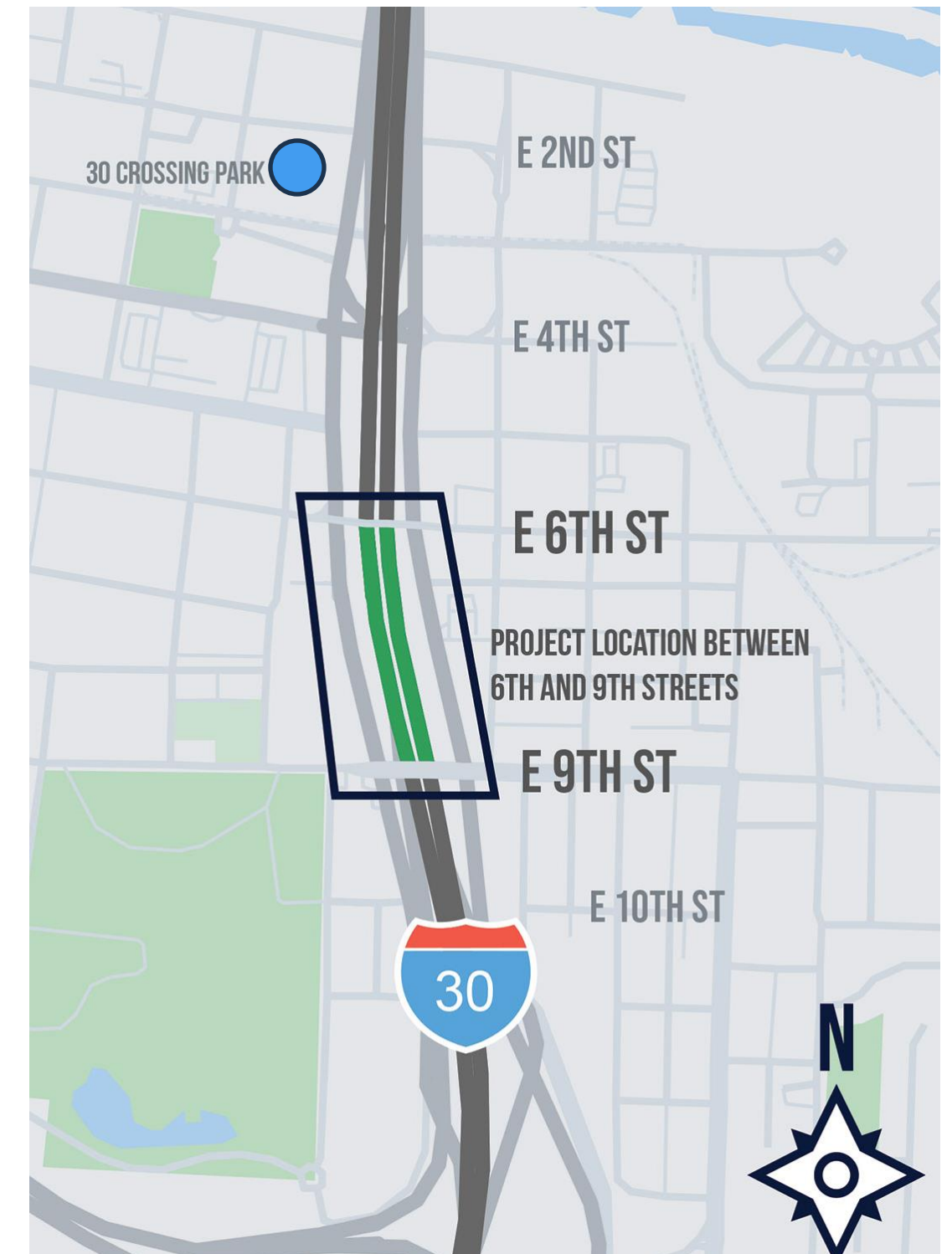
PLACE DECK PARK LID OVER I-30



STUDY LOCATION



- **I-30 Deck Park Planning Study:** A study to explore creating a deck park over I-30 between 6th and 9th Streets.
- **30 Crossing Park:** A planned 18-acre green space in downtown Little Rock, made possible by the recent reconstruction and reconfiguration of Interstate 30. It will be located under the new I-30 bridge between President Clinton Avenue and East Second Street.



WHERE ARE...Deck Parks?

Analyzing the Impact of Interstate Infrastructure

More Than a Park

This map highlights deck park projects that are doing more than just covering traffic; they are stitching cities back together. The featured projects—in San Diego, Dallas, and Pittsburgh—are not just creating green space. They are physically healing the wounds of redlining, restoring lost street grids, and reconnecting neighborhoods that were severed for decades. Little Rock is now poised to join this national movement, transforming a concrete barrier into a bridge for community connection.

The story of Interstate 30 in Little Rock is not unique—it is a shared American tragedy. In the mid-20th century, the Federal Highway Act routed massive concrete trenches through the hearts of thriving communities across the nation. From Little Rock's 9th Street to St. Paul's Rondo neighborhood, interstate infrastructure would unfortunately, displace and disconnect people from place.



Teralta Park



San Diego, CA

Southern Gateway Park



Dallas, TX

Frankie Pace Park



Pittsburgh, PA

Deck Park Across the United States

- Seattle, WA - Freeway Park
- Dallas, TX - Klyde Warren Park
- Boston, MA - Rose Kennedy Greenway
- Phoenix, AZ - Margaret T. Hance Park
- San Francisco, CA - Presidio Tunnel Tops
- San Francisco, CA - Salesforce Park
- St. Louis, MO - Gateway Arch National Park
- Columbus, OH - The Cap at Union Station
- Mercer Island, WA - Aubrey Davis Park
- Denver, CO - Central 70 Cover Park
- Trenton, NJ - South Riverwalk Park
- Duluth, MN - Leif Erikson Park / The Lakewalk
- Chicago, IL - Millennium Park
- Cincinnati, OH - Smale Riverfront Park
- Rochester, NY - Inner Loop East (Highway Removal)
- St. Paul, MN - ReConnect Rondo Land Bridge (Proposed)
- Pittsburgh, PA - Frankie Pace Park (Built)
- Dallas, TX - Southern Gateway Park (Under Construction)
- Atlanta, GA - The Stitch (Proposed)
- Austin, TX - I-35 Cap & Stitch (Proposed)
- Richmond, VA - Reconnect Jackson Ward (Proposed)
- San Diego, CA - Teralta Park (Built)
- San Diego, CA - Chicano Park (Built)
- Boston, MA - Auntie Kay & Uncle Frank Chin Park (Built)





STATION 4

Meeting Materials



PUBLIC ENGAGEMENT

Listening to Our Community

How We Engage

1. Community Engagement Meetings
2. Community Advisory Board (CAB)
3. Study Website
4. Informal Feedback Channels

Your Voice Matters!



WHAT'S NEXT?



Comments Received

- Comments received during the comment period (February 9 - February 24), following Community Engagement Meeting #1, will be reviewed by the City of Little Rock.

Schedule

We're planning two more Community Engagement meetings. Both meetings are expected to take place mid to late 2026. Exact dates will be announced as soon as they are scheduled.

Community Engagement Meeting #2

- Based on feedback from Community Engagement Meeting #1, deck park alternatives will be developed and presented at the second meeting for additional community input.

Community Engagement Meeting #3

- Once a recommended alternative is selected, it will be presented to the community as their opportunity to review the proposed option.

ESTIMATED STUDY TIMELINE



Schedule is preliminary and subject to change



STATION 5

Meeting Materials



STATION 5 INSTRUCTIONS



If you are here in person:

Welcome to Station 5!

Help shape the concept of the deck park by sharing your opinion on amenities.

How to Participate:

1. Grab Your Stickers!

- **Green** = **YES** (You want this amenity)
- **Red** = **NO** (You do not want this amenity)

2. Vote

Place no more than **ONE sticker per amenity** for an accurate tally. Some amenities may look familiar to those existing or planned for other parks. Vote based on what you'd like to see at the planned deck park location!

3. Make Your Voice Count

Your votes will be tallied and recorded.

The planning team will use your feedback to guide next steps.

If you're participating online:



*To visit the study website,
scan the QR code above*

COMMUNITY SPACES AND GREEN SPACES



Community Engagement for Study Recommendations

DO WE NEED...Community Spaces?
Place sticker dots on amenities that you think the I-30 Deck Park could benefit from



COMMUNITY PLAZA



PLAY ZONE



PUBLIC ART



WRITE YOUR OWN IDEA

SPLASH PAD AREA



OUTDOOR HISTORY



PAINTED SPORT COURT



OUTDOOR MUSIC VENUE



DO WE NEED...Green Spaces?
Place sticker dots on amenities that you think the I-30 Deck Park could benefit from



SHADED TREE GROVE



FLEXIBLE LAWN SPACE



OUTDOOR CLASSROOM



DOG PARK



NATURAL PLAYSCAPES



SHADE STRUCTURE



POLLINATOR GARDEN



WRITE YOUR OWN IDEA

Community Spaces?

Green Spaces?

PEDESTRIAN MOBILITY AND WELLNESS



Community Engagement for Study Recommendations

DO WE NEED...Better Ways to Walk, Bike, & Ride?

Place sticker dots on amenities that you think the I-30 Deck Park could benefit from



BIKE LANES



WRITE YOUR OWN IDEA

BIKE REPAIR STATION



TRAFFIC CALMING



ACCESSIBILITY IMPROVEMENTS



SIGNAGE/WAYFINDING



NEIGHBORHOOD TRANSIT HUB



ILLUMINATED PARK PATHS



DO WE NEED...Wellness Spaces?

Place sticker dots on amenities that you think the I-30 Deck Park could benefit from



ACCESSIBLE FITNESS



OUTDOOR EXERCISE SPACE



WATER TOWERS



SENSORY PARK



WRITE YOUR OWN IDEA

WELLNESS PAVILION



JOGGING LOOP



RECHARGE ZONE



Better Ways to Walk Bike, & Ride?

Wellness Spaces?

COMMENT PERIOD



February 9, 2026, through February 24, 2026

February 2026

S	M	T	W	T	F	S
1	2	3	4	5	6	7
8	9	10	11	12	13	14
15	16	17	18	19	20	21
22	23	24	25	26	27	28

COMMENT FORMS & ADDITIONAL RESOURCES

Visit Iri30deckpark.publicmtgs.com

CITIZEN COMMENT FORM

I-30 Deck Park Planning Study
City of Little Rock
Community Engagement Meeting #1
CALS Main Library (Darragh Center – 5th floor)
100 Rock Street, Little Rock, AR
4:30 PM-6:30 PM
February 9, 2026

Make your comments on this form and leave it with City of Little Rock personnel at the meeting or mail/email it by 4:30 p.m. Tuesday, February 24, 2026, to:

Garver
ATTN: Keegan Doan
RE: I-30 Deck Park Planning Study
4701 Northshore Drive
North Little Rock, AR 72118

Email: PublicInvolvement@GarverUSA.com

Estimated time to complete the form: About 5 minutes

(Please Print)

Name: _____

Address: _____

Phone: _____

Email: _____

See next page for questions →





I-30 Deck Park Planning Study Summary Sheet

Little Rock, Arkansas (Pulaski County)

1



Study Background

The I-30 Deck Park Planning Study is an effort to explore creating a green space over Interstate 30 in downtown Little Rock between 6th and 9th streets. The goal of a deck park at this location will be to reconnect neighborhoods divided by the highway, improve pedestrian and bike access, and provide a vibrant community gathering area. This will complement the existing and future amenities for Little Rock. The study includes conceptual design work, cost analysis, and public engagement to ensure community input shapes the vision. It also examines technical and economic feasibility of a deck park in this location. Completing the study positions the city to move into the next phases of the environmental study and design and to apply for federal grants, and explore other funding sources.

Project Team

- City of Little Rock, Garver, CC Mercer Watson, Cromwell Architects Engineers, Polk Stanley Wilcox, The Traffic Group, and HDR.

Study Overview



Community Input

Gathering feedback from residents and stakeholders to ensure the deck park reflects community needs and values.



Analyze Project Costs

Prepare a preliminary budget to understand the financial requirements for building, operating and maintaining the proposed deck park.



Traffic and Mobility Study

Evaluate current traffic patterns on I-30 and nearby streets and analyze how a deck park would affect vehicle flow, pedestrian safety, and overall connectivity.



Open Forum Community Engagement Meetings

Public meetings where attendees can learn about the project, ask questions, and share ideas in an interactive setting.



Impact Mitigation and Evaluation

Evaluate the project's ability to mitigate economic, social, and environmental impacts



Feasibility Study, Alternative Evaluation, and Conceptual Design

Examine whether the project is feasible and cost-effective, and compare design options, including a no-build alternative and ultimately develop conceptual design for a single, recommended alternative.



Why Are We Having This Community Engagement Meeting?

The purpose of this meeting is to introduce the concept of a Deck Park between 6th and 9th streets, outline the schedule of the planning study, and present strategies to align with city plans and programming. This is an open-forum style meeting. View exhibits, ask questions, and provide comments during the scheduled hours.



Scan the QR Code to visit the website or visit [LRI30DeckPark.TransportationPlanRoom.com](https://www.lri30deckpark.com)



For additional information, please email PublicInvolvement@GarverUSA.com or call 501-823-0730

1



CONTACT US

Mail | Garver
ATTN: Keegan Doan
4701 Northshore Drive
North Little Rock, AR 72118

Email | PublicInvolvement@GarverUSA.com

Phone | 501-823-0730



@citylittlerock



THANK YOU FOR YOUR PARTICIPATION!



@citylittlerock