



I-30 DECK PARK PLANNING STUDY

Community Engagement Meeting #1
Little Rock, Arkansas
Pulaski County

Hello. From the City of Little Rock and the I-30 Deck Park Planning Team, we thank you for watching this presentation. In the following, we will provide insight into important information and planning study details presented at Community Engagement Meeting #1. We hope that you were able to attend the meeting and engage with city staff and the planning team, but if you didn't get a chance to, please watch the following closely.

AGENDA

- Meeting Logistics
- Meeting Materials
- Comment Period & Additional Resources
- Contact Us



This presentation will cover the following agenda topics: Meeting Logistics, Meeting Materials, Comment Period and Additional Resources, and Contact Information.

MEETING LOGISTICS



Community Engagement Meeting #1

Monday, February 9, 2026
4:30 – 6:30 p.m.

CALS Main Library
Darragh Center – 5th Floor
100 Rock Street
Little Rock, AR

February 2026

S	M	T	W	T	F	S
1	2	3	4	5	6	7
8	9	10	11	12	13	14
15	16	17	18	19	20	21
22	23	24	25	26	27	28

The Community Engagement Meeting #1 is being held on Monday, February 9, 2026, from 4:30 to 6:30 P.M., at the CALS Main Library, Darragh Center – 5th Floor, located at 100 Rock Street, Little Rock, Arkansas.

MEETING MATERIALS



Station 1

- Why are We Having this Meeting?
- Study Location Map
- Study Overview
- Purpose and Need
- Frequently Asked Questions

Station 2

- Reconnecting Communities Pilot and Study Grants
- Feasibility and Funding
- Reconnecting Downtown

Station 3

- Site History
- Site Context
- What and Where are Deck Parks?

Station 4

- Public Engagement
- What's Next?
- Estimated Study Timeline

Station 5

- Public comment, input, and Feedback

In this presentation, we will review the materials that are displayed at each station at Community Engagement Meeting #1. Attendees will have access to five stations where they can view information, speak with staff members, and ask questions.



STATION 1

Meeting Materials

At Station 1, you'll find materials that cover:

- Why We're Having This Meeting
- Study Location Map
- Study Overview
- Purpose and Need
- Frequently Asked Questions

PURPOSE OF THIS MEETING



Community Engagement Meeting #1

- Introduce concept of a Deck Park between 6th and 9th streets in Little Rock, Arkansas.
- Outline the schedule of the planning study.
- Present strategies to align with the city plans and programming.
- Open forum style with no formal presentation.
- Meeting materials at Stations 1-5.
- Study website available with all materials for future viewing at lri30deckpark.publicmtgs.com.



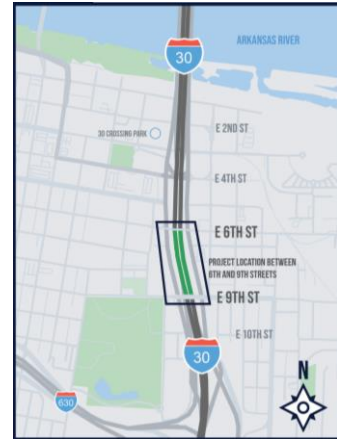
*To visit the study website,
scan the QR code above*

The purpose of this Community Engagement Meeting #1 is to introduce the concept of a Deck Park between 6th and 9th streets in Little Rock, Arkansas, outline the schedule of the planning study, and present strategies to align with city plans and programming. This is an open-forum style meeting with no formal presentation. The study website now hosts all meeting materials presented at this meeting, which are available for viewing at any time. To visit the study website, please scan the QR code on this slide.

STUDY LOCATION MAP



- The I-30 Deck Park Planning Study area is between 6th and 9th streets in Little Rock, Arkansas.



This planning study will explore the feasibility of a deck park between 6th and 9th streets in Little Rock, Arkansas. The scope of the study was defined by the grant that is funding the study. Grant funding cannot be used to study the possibility of parks or facilities in other locations, but the study will consider opportunities to connect to other existing and planned amenities.

STUDY OVERVIEW



Community
Input



Open Forum
Community
Engagement
Meetings



Analyze Project
Costs



Impact Mitigation
and Evaluation
(PEL)



Traffic and
Mobility Study



Feasibility Study,
Alternative
Evaluation, and
Conceptual Design
of Recommended
Alternative

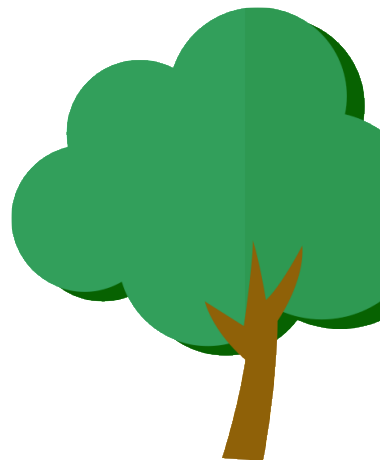
The I-30 Deck Park Planning Study is an effort to explore creating a green space over Interstate 30 in downtown Little Rock between 6th and 9th streets. The goal of a deck park at this location will be to reconnect neighborhoods divided by the highway, improve pedestrian and bike access, and provide a vibrant community gathering area.

This will complement the existing and future amenities for Little Rock. The study includes conceptual design work, cost analysis, and public engagement to ensure community input shapes the vision. It also examines technical and economic feasibility of a deck park in this location. Completing the study positions the city to move into the next phases of the environmental study and design and to apply for federal grants and explore other funding sources.

STUDY PURPOSE AND NEED



- **The initial draft *Purpose Statement* for the study is:** To provide a Deck Park spanning across I-30 between 6th and 9th streets that will provide a safer and more desirable pedestrian/bicycle crossing over I-30 with amenities that would create a community gathering place and urban link to “bridge” the economic and social divide created by I-30.
- The complete Purpose and Need statement is available on the study website as well as on the Purpose and Need exhibit.



The initial draft Purpose Statement for the study is: To provide a Deck Park spanning across I-30 between 6th and 9th streets that will provide a safer and more desirable pedestrian/bicycle crossing over I-30 with amenities that would create a community gathering place and urban link to “bridge” the economic and social divide created by I-30.

The complete Purpose and Need statement is available on the study website as well as on the Purpose and Need exhibit.

FREQUENTLY ASKED QUESTIONS (1 OF 2)



1) What is the "Deck Park"?

A deck park is a landscaped public space built on a structure over a highway that reconnects streets and neighborhoods separated by the roadway. You might also hear "highway cap" or "lid" as those are common synonyms.

2) What's a "Planning and Environmental Linkages (PEL) Study"?

A PEL Study is a planning process recognized by the Federal Highway Administration (FHWA) that evaluates ideas early and documents decisions so they can be carried into the later federal environmental review. Using PEL helps streamline and inform the NEPA process and involves agencies and the public up front.

3) What is "NEPA"?

NEPA stands for the National Environmental Policy Act. It's the federal process that studies environmental, community, and economic impacts before any federally funded projects can move forward. Work done during the PEL Study is intended to set up and accelerate the future NEPA phase.

4) What is a "Feasibility Study"?

It's an early-stage analysis that asks: Can a deck park be built here, how might it be built, what would it cost (order-of-magnitude), and what benefits or challenges are expected? For this project, the team will develop and compare multiple alternatives (including a "no-build" option) and recommend one to advance.

5) What does "No-Build Alternative" mean?

The "no-build" option keeps things as they are. It's included in comparisons so the public can see the costs and benefits of building the deck park versus making no change.

The next two slides will cover Frequently Asked Questions about the study. You can view these questions at Station 1 during the in-person meeting or access them anytime on the study website.

FREQUENTLY ASKED QUESTIONS (2 OF 2)



6) What is a "Conceptual Design" (or "Conceptual Engineering")?

Conceptual design turns the recommended alternative into conceptual plans and drawings (layouts, structural concepts, safety systems, access, lighting, drainage) with enough detail to estimate cost and carry the project into NEPA and later design phases.

7) What is a "Cost Estimate," and what does "planning-level" mean?

A planning-level cost estimate is a high-level, early estimate that covers design, construction, and operations & maintenance (O&M). It includes contingencies and is refined later as the design becomes more detailed.

8) Who develops the "Funding Strategy"?

The study will outline options for funding the design, construction, and long-term maintenance and operations of the project, and will include recommendations for funding sources, sequencing, and risk management.

9) What is the "Traffic & Mobility Study"?

This study looks at how people move today and, in the future, by car, bus, bike, or on foot, how safe those movements are, and how the deck park alternatives could affect intersections and travel patterns. Findings inform the alternatives and design.

As stated in the previous slide, you can view these questions at Station 1 during the in-person meeting or access them anytime on the study website.



STATION 2

Meeting Materials

At Station 2, you'll find materials that cover the Reconnecting Community Pilot Grant in general and details regarding the I-30 Deck Park Planning Study Grant. We will also present Feasibility considerations and Funding options.

RCP AND PLANNING STUDY GRANTS



- Reconnecting Communities Pilot (RCP) Program: A U.S. DOT initiative to address impacts of past transportation projects.
- In 2024, the City of Little Rock entered into an agreement with the USDOT for \$2,000,000, the maximum planning grant amount awarded.
- Grant purpose: Planning study for a proposed deck park between 6th Street and 9th Street in Little Rock.
- Study coordination: Arkansas Department of Transportation (ARDOT) and Federal Highway Administration (FHWA).
- For additional information, visit www.transportation.gov/reconnecting.

The Reconnecting Communities Pilot Program (RCP) is a federal initiative from the U.S. Department of Transportation. It was created to address the impacts of past transportation projects that disconnected neighborhoods and limited access to essential services. Many highways built decades ago split neighborhoods, creating barriers to jobs, schools, and services. Cities, counties, tribal governments, and nonprofits can apply for RCP grants. The program is funded through the Bipartisan Infrastructure Law, passed in 2021, which invests in rebuilding infrastructure and improving communities across the country. Funding supports planning studies, like the I-30 Deck Park Planning Study, and also construction projects. The RCP grant helps communities remove, redesign, or mitigate barriers like highways or rail lines that separate neighborhoods. These initiatives are also intended to improve safety and access for walking, biking, and transit, and to reconnect people to jobs, schools, healthcare, and other vital resources.

The City of Little Rock pursued a Reconnecting Communities Pilot (RCP) Program grant to fund a planning study for a potential deck park over Interstate 30 between 6th and 9th Streets. This initiative seeks to reconnect neighborhoods divided when I-30 was originally constructed and introduce new green space in

the heart of the city. In 2024, the City entered into an agreement with the USDOT for a \$2,000,000 grant, the maximum planning grant amount awarded, and along with a \$500,000 local match, secured a total of \$2.5 million for the I-30 Deck Park Planning Study. This effort represents a transformative opportunity to restore community connections, improve mobility, and create a vibrant public space that benefits both residents and visitors.

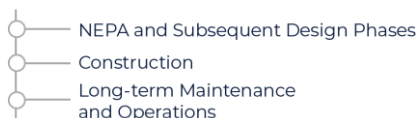
For additional information, visit www.transportation.gov/reconnecting.

FEASIBILITY AND FUNDING



- The City of Little Rock is evaluating the feasibility of constructing a Deck Park over I-30 between 6th Street and 9th Street as part of its USDOT-funded Reconnecting Communities Pilot (RCP) Planning Study.

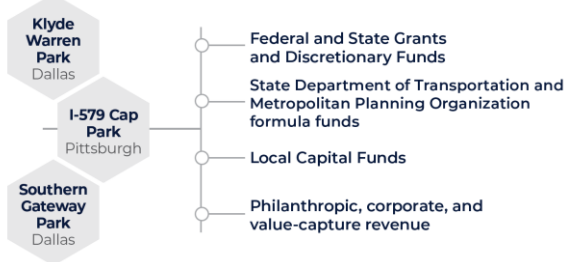
Planning Study will outline options for Funding:



Planning Study will recommend:



A blended funding approach is typical for:



The City of Little Rock is evaluating both the technical and economic feasibility of constructing a Deck Park over I-30 between 6th Street and 9th Street.

To transition from planning to implementation, the City will need to position the project for a diversified funding strategy. The planning study will outline options for funding the design, construction, and long-term maintenance and operations. The Planning Study will recommend funding sources, sequencing, and risk management.

Nationally, urban deck parks have been successfully delivered through blended funding approaches that leverage Federal and State Grants and Discretionary Funds, State Department of Transportation and Metropolitan Planning Organization formula funds, Local Capitol Funds, and Philanthropic, corporate, and value-capture revenue.

You can find more information on the funding and design of existing deck parks such as the Klyde Warren Park, I-579 CAP Park, and the Southern Gateway Park by visiting the study website and viewing the Frequently Asked Questions.

RECONNECTING DOWNTOWN



The **I-30 Deck Park** can support the framework, goals, and objectives defined in the **City of Little Rock's Downtown Master Plan (June 2024)**:

- Reconnects Urban Fabric
- Enhances Public Open Space
- Supports Mobility and Connectivity
- Catalyzes Economic Development
- Promotes Placemaking and Culture
- Encourages Downtown Residency Growth
- Improves Quality of Life
- Strengthens Gateway Presence
- Supports Future Trail and Open Space Networks



This board highlights how the I-30 Deck Park supports the City of Little Rock's Downtown Master Plan by reconnecting divided neighborhoods and creating much-needed public green space. It offers a quick look at how the project enhances mobility, livability, and long-term downtown vitality, which are defined as the framework, goals, and objectives in the Downtown Master Plan.



STATION 3

Meeting Materials

At Station 3, you'll find materials that cover:

Site History: Key milestones from 1943, 1960, 1970, and today.

Site Context: Reconnecting communities, landmarks and cultural institutions, walking distance, bike trails, and transit routes.

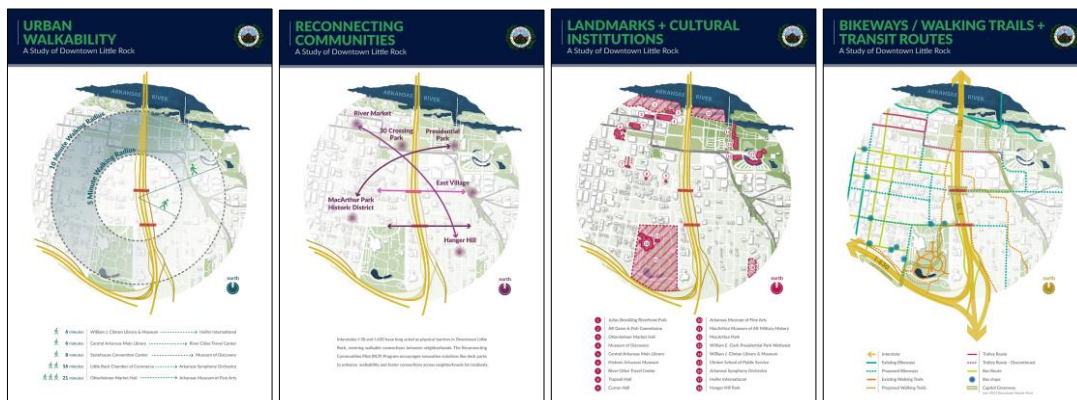
Deck Parks: What they are and where they're located.

SITE HISTORY



These exhibits provide a brief overview of the history and impacts to the study area — highlighting how the corridor changed and developed over time, and the key moments that shaped and affected the surrounding community.

SITE CONTEXT



These exhibits outline the context around the study area — showing nearby communities, key landmarks and cultural institutions, and the connections people use every day, including walking routes, bike trails, and transit options. The I-30 Deck Park Planning Study will investigate opportunities to incorporate, enhance, and tie into existing and planned amenities and mobility networks.

WHAT IS A DECK PARK?



- An urban planning term for a park built atop or “decked over” a major transportation artery, such as an interstate highway. The goal is typically to create new green space and reconnect neighborhoods that were previously divided by the infrastructure.
- A deck park can also be called a “cap” or “lid” park.



Klyde Warren Park in Dallas

A deck park is an urban planning term for a park built atop or “decked over” a major transportation artery, such as an interstate highway. The goal is typically to create new green space and reconnect neighborhoods that were previously divided by the infrastructure. A deck park can also be called a “cap” or “lid” park.

WHAT IS...A Deck Park?

Analyzing the Impact of Interstate Infrastructure



More Than a Park

A deck park is a public or civic space built on a structural "lid" over an existing roadway—most often an interstate or sunken highway. By spanning across the infrastructure below, a deck park reconnects neighborhoods that were once divided and reclaims land previously lost to transportation corridors. These parks can support green space, walking and biking paths, cultural programming, and community gathering areas—transforming infrastructure into an asset rather than a barrier.

URBAN HEAT ISLANDS

Heat islands are areas in cities that are significantly warmer than surrounding rural areas. They are caused by the absorption of heat by urban surfaces like asphalt and concrete, which then radiate the heat back out. This can lead to higher temperatures, increased energy use for air conditioning, and worse air quality.

Deck Park Solution:

- Green spaces and trees can help cool the surrounding area.
- The use of permeable materials like grass and gravel can help reduce heat absorption.
- The use of reflective materials can help reduce heat absorption.

AIR QUALITY

Transportation is a major source of air pollution, including greenhouse gases and particulate matter. These pollutants can lead to respiratory problems, heart disease, and other health issues. They can also contribute to climate change.

Deck Park Solution:

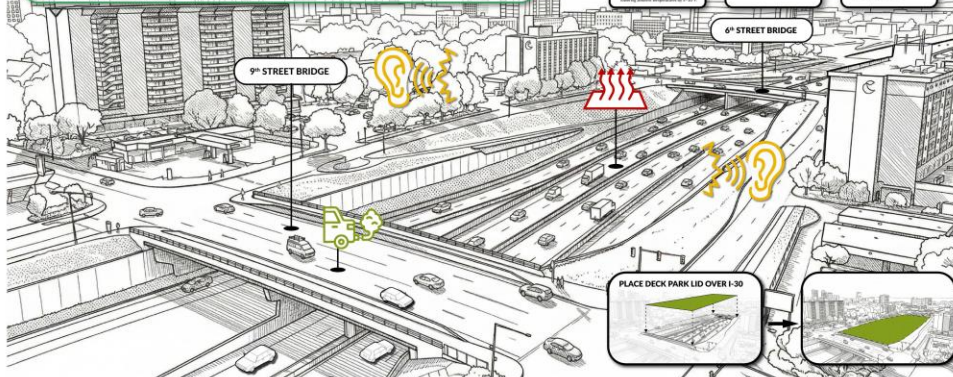
- Green spaces and trees can help absorb pollutants and produce oxygen.
- The use of permeable materials can help reduce runoff and improve water quality.
- The use of reflective materials can help reduce heat absorption.

SOUND POLLUTION

Transportation is a major source of noise pollution, which can lead to hearing loss, stress, and other health issues. It can also interfere with sleep and reduce quality of life.

Deck Park Solution:

- Green spaces and trees can help absorb sound and reduce noise levels.
- The use of sound barriers can help reduce noise levels.
- The use of sound-absorbing materials can help reduce noise levels.

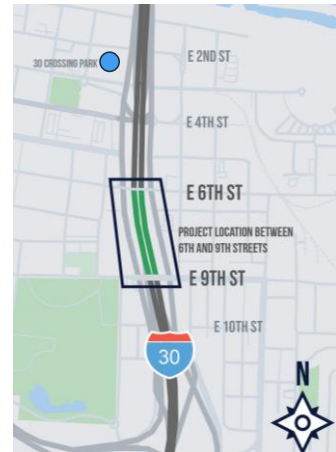


This exhibit details the positive impacts and benefits to interstate infrastructure that can be realized with the addition of a deck park in the downtown area. This board will be available at Station 3 at the in-person meeting or on the study website.

STUDY LOCATION



- **I-30 Deck Park Planning Study:** A study to explore creating a deck park over I-30 between 6th and 9th Streets.
- **30 Crossing Park:** A planned 18-acre green space in downtown Little Rock, made possible by the recent reconstruction and reconfiguration of Interstate 30. It will be located under the new I-30 bridge between President Clinton Avenue and East Second Street.



The I-30 Deck Park Planning Study is exploring a deck park over Interstate 30 between 6th and 9th streets in Little Rock, Arkansas. An unrelated project named 30 Crossing Park is a planned 18-acre green space in downtown Little Rock, made possible by the recent reconstruction and reconfiguration of Interstate 30. It will be located under the new I-30 bridge between President Clinton Avenue and East Second Street in Little Rock, Arkansas.

Analyzing the Impact of Interstate Infrastructure

More Than a Park

This map highlights deck park projects that are doing more than just covering traffic; they are stitching cities back together. The featured projects—in San Diego, Dallas, and Pittsburgh—are not just creating green space. They are physically healing the wounds of redlining, restoring lost street grids, and reconnecting neighborhoods that were severed for decades. Little Rock is now poised to join this national movement, transforming a concrete barrier into a bridge for community connection.

The story of Interstate 30 in Little Rock is not unique—it is a shared American tragedy. In the mid-20th century, the Federal Highway Act routed massive concrete trenches through the hearts of thriving communities across the nation. From Little Rock's 9th Street to St. Paul's Rondo neighborhood, interstate infrastructure would unfortunately, displace and disconnect people from place.



This exhibit details the locations of similar deck parks across the country and will be available at Station 3 at the in-person meeting or on the study website.



STATION 4

Meeting Materials

At Station 4, you'll find materials that cover:

Public Engagement

What's Next?

Estimated Study Timeline

PUBLIC ENGAGEMENT

Listening to Our Community

How We Engage

1. Community Engagement Meetings
2. Community Advisory Board (CAB)
3. Study Website
4. Informal Feedback Channels

Your Voice Matters!



The I-30 Deck Park Planning Study is dedicated to meaningful public involvement.

The community engagement meetings will use an open, interactive format with stations and displays. Attendees can ask questions and share feedback directly with project staff and Community Advisory Board members. There will be a total of three Community Engagement meetings.

The Community Advisory Board, or CAB, is made up of local leaders, advocates, and residents who serve as a bridge between the study team and the community. The study website serves as a central resource for accessing project updates and study materials, learning about upcoming community engagement opportunities, and providing comments and feedback to help guide the development of the project. Informal feedback channels such as an email address, voicemail number, and mailing address will be provided for the duration of the Planning Study, allowing the public to share their comments.

Your voice matters. Your feedback helps shape this study. Connect with study staff, CAB members, attend meetings, or share your thoughts and ideas online.

Together, we are working towards a deck park that belongs to everyone.

WHAT'S NEXT?



Comments Received

- Comments received during the comment period (February 9 - February 24), following Community Engagement Meeting #1, will be reviewed by the City of Little Rock.

Schedule

We're planning two more Community Engagement meetings. Both meetings are expected to take place mid to late 2026. Exact dates will be announced as soon as they are scheduled.

Community Engagement Meeting #2

- Based on feedback from Community Engagement Meeting #1, deck park alternatives will be developed and presented at the second meeting for additional community input.

Community Engagement Meeting #3

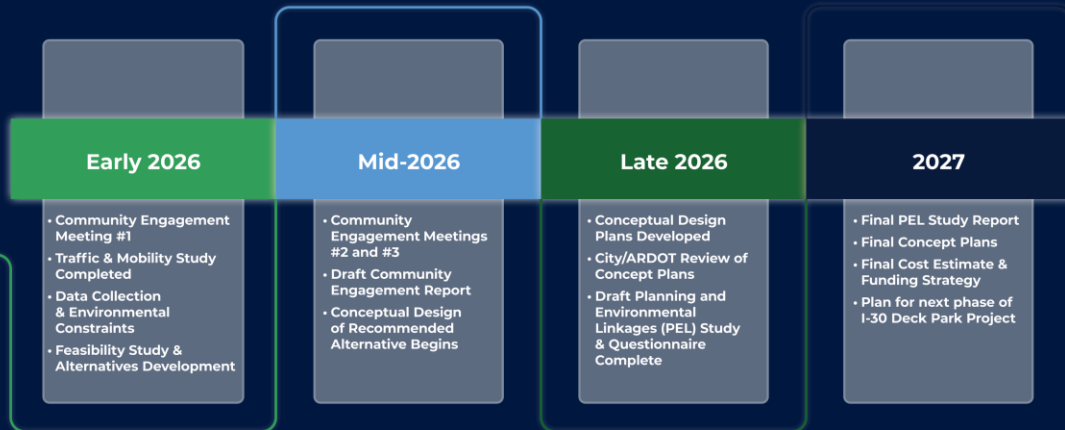
- Once a recommended alternative is selected, it will be presented to the community as their opportunity to review the proposed option.

Comments received during the comment period (February 9 through February 24), following Community Engagement Meeting #1, will be reviewed by the City of Little Rock.

We're planning two more Community Engagement meetings to keep you informed and involved. Both meetings are expected to take place in 2026. Exact dates will be announced as soon as they are scheduled.

Based on community feedback received during and following Community Engagement Meeting #1, alternatives for the deck park will be developed and shared at the second Community Engagement Meeting to obtain community feedback on the alternatives. After a recommended alternative is selected for further development, it will be presented to the community. This is your chance to see the recommended option. After the planning study is complete, the city will use its findings to determine if, when, and how to seek funding to then move into the next project phases - NEPA, detailed design, and permitting. These steps prepare the project for construction, turning the concept into a deck park that reconnects communities.

ESTIMATED STUDY TIMELINE



Schedule is preliminary and subject to change

This timeline provides a big-picture look at how the I-30 Deck Park Planning Study will move forward. In early 2026, the focus is on listening to the community, understanding existing conditions, and studying traffic and mobility. As we move into mid-2026, the team will explore different ideas for a deck park and continue gathering feedback to help shape a recommended concept. By late 2026, the study will wrap up with a recommended concept, cost information, and a plan for how the project could move ahead. This schedule is an estimate and may change as the study progresses.



STATION 5

Meeting Materials



At Station 5, you'll have the opportunity to vote on your preferred features for the deck park—such as community spaces, green spaces, pedestrian mobility, and wellness spaces.

STATION 5 INSTRUCTIONS



If you are here in person:

Welcome to Station 5!

Help shape the concept of the deck park by sharing your opinion on amenities.

How to Participate:

1. Grab Your Stickers!

- **Green = YES** (You want this amenity)
- **Red = NO** (You do not want this amenity)

2. Vote

Place no more than **ONE sticker per amenity** for an accurate tally. Some amenities may look familiar to those existing or planned for other parks. Vote based on what you'd like to see at the planned deck park location!

3. Make Your Voice Count

Your votes will be tallied and recorded.

The planning team will use your feedback to guide next steps.

If you're participating online:



*To visit the study website,
scan the QR code above*

Welcome to Station 5. This station focuses on gathering your input on potential amenities for the I-30 Deck Park.

If you're here in person: Please grab your stickers. Green means YES — you want to see this amenity included. Red means NO — you do not want this amenity included. Place no more than one sticker per amenity so we can keep an accurate tally. Some amenities may look familiar from other parks, but please vote based on what you'd like to see at this specific deck park location.

If you're participating online: Scan the QR code and visit the Station 5 webpage to complete the online voting form. You can find the Station 5 webpage under the "Meeting Materials" page. For each amenity, you can select Yes, No, or Neutral based on your preference. All feedback matters. Votes from both the meeting and the website will be compiled and reviewed by the planning team and used to help guide the next steps in the study.

COMMUNITY SPACES AND GREEN SPACES



Community Engagement for Study Recommendations

DO WE NEED...Community Spaces?

Place sticker dots on amenities that you think the I-30 Deck Park could benefit from



COMMUNITY PLAZA



PLAY ZONE



PUBLIC ART



WRITE YOUR OWN IDEA



SPLASH PAD AREA



OUTDOOR HISTORY



PAINTED SPORT COURT



OUTDOOR MUSIC VENUE

Community Spaces?

DO WE NEED...Green Spaces?

Place sticker dots on amenities that you think the I-30 Deck Park could benefit from



SHADED TREE GROVE



FLEXIBLE LAWN SPACE



OUTDOOR CLASSROOM



DOG PARK



NATURAL PLAYSAPES



SHADE STRUCTURE



POLLINATOR GARDEN



WRITE YOUR OWN IDEA

Green Spaces?

At Station 5, you can help shape the future of the I-30 Deck Park! Vote on the types of community spaces and green spaces you'd like to see. Use sticker dots to show your support: place a green dot for "Yes" if you think it's needed, or a red dot for "No" if you don't. Can't attend the meeting? No problem—you can also share your input by completing the survey on the study website.

PEDESTRIAN MOBILITY AND WELLNESS



Community Engagement for Study Recommendations

DO WE NEED...Better Ways to Walk, Bike, & Ride?

Place sticker dots on amenities that you think the I-30 Deck Park could benefit from

BIKE LANES



WRITE YOUR OWN IDEA



BIKE REPAIR STATION



TRAFFIC CALMING



ACCESSIBILITY IMPROVEMENTS



SIGNAGE/WAYFINDING



NEIGHBORHOOD TRANSIT HUB



ILLUMINATED PARK PATHS



Better Ways to Walk Bike, & Ride?

DO WE NEED...Wellness Spaces?

Place sticker dots on amenities that you think the I-30 Deck Park could benefit from

ACCESSIBLE FITNESS



OUTDOOR EXERCISE SPACE



WATER TOWERS



SENSORY PARK



WRITE YOUR OWN IDEA



WELLNESS PAVILION



JOGGING LOOP



RECHARGE ZONE



Wellness Spaces?

Station 5 also focuses on ideas for pedestrian mobility and wellness spaces—help us explore how these features can enhance connectivity, health, and quality of life.

COMMENT PERIOD



February 9, 2026, through February 24, 2026

February 2026

S	M	T	W	T	F	S
1	2	3	4	5	6	7
8	9	10	11	12	13	14
15	16	17	18	19	20	21
22	23	24	25	26	27	28

The comment period will begin Monday, February 9, 2026, through Tuesday, February 24, 2026.

COMMENT FORMS & ADDITIONAL RESOURCES

Visit lri30deckpark.publicmtgs.com

CITIZEN COMMENT FORM
I-30 Deck Park Planning Study
 City of Little Rock
 Community Engagement Meeting #1
 CALS Main Library (Borough Center - 5th floor)
 100 Rock Street, Little Rock, AR
 4:30 PM - 6:30 PM
 February 9, 2024

Write your comments on this form and have it with you at Little Rock presented at the meeting or submitted to the City on Tuesday, February 10, 2024.

Name: _____
 Email: lri30deckpark@lri30.com
 Address: _____
 Phone: _____
 Email: _____

See next page for questions.



I-30 Deck Park Planning Study Summary Sheet
 Little Rock, Arkansas (Pulaski County)

Study Background
 This I-30 Deck Park Planning Study is an effort to explore creating a green space near Interstate 30 in downtown Little Rock between 6th and 9th streets. The goal of a deck park at this location will be to increase neighborhood diversity by the highway, improve pedestrian and bike access, and provide a vibrant community gathering area. The staff completed the planning and design work for this study. The study includes conceptual design work, cost analysis, and public engagement to ensure community input shapes the vision. A site-specific technical and economic feasibility study of a deck park in this location. Completing the study positions the city to move into the next phases of the environmental study and design and to apply for federal grants, and explore other funding sources.

Project Team
 City of Little Rock, Carter, CC Hester, Walters, Chism, Architects Engineers, Parks, Planning, Wilson, The Traffic Group, and HDR.

Study Overview

Community Input Gathering feedback from residents and stakeholders to understand the needs, desires, and concerns of the community and use them to shape the study.	Analyze Project Costs Prepare a preliminary budget to understand the financial requirements of the study, operating and maintaining the proposed deck park.	Traffic and Mobility Study Evaluate current traffic patterns on I-30 and nearby streets and analyze how a deck park would affect vehicle flow, pedestrian safety, and overall community.
Open Forum Community Engagement Meeting Public meetings where residents can learn about the project, ask questions, and provide input. An in-person meeting.	Impact Mitigation and Evaluation Evaluate the project's potential to disrupt economic activity and environmental impacts, and develop strategies to minimize negative impacts.	Feasibility Study, Alternative Design, and Conceptual Design Evaluate whether the project is feasible and develop a design concept. Develop design alternatives, including a feasibility study and preliminary design, and submit a design concept to the city.

Why Are We Having This Community Engagement Meeting?
 The purpose of this meeting is to introduce the concept of a Deck Park between 6th and 9th streets, outline the schedule of the planning study, and present strategies to align with city plans and programming. This is an open forum (public meeting). View exhibits, ask questions, and provide comments during the scheduled hours.

Scan the QR Code to visit the website or visit lri30deckpark.transformationcenter.com

For additional information, please email PublicInvolvement@lri30.com or call 501-655-4700.

To access comment forms and additional meeting materials, please visit the study website at LR-I-30-Deck-Park-DOT-Public_M-T-G-S-DOT-COM. You can also scan the QR code on your screen. Again, we want you to be heard!!! We encourage you to provide comment either at the community engagement meeting or during the comment period through other avenues provided. Your voice matters!!!



CONTACT US



Mail | Garver
ATTN: Keegan Doan
4701 Northshore Drive
North Little Rock, AR 72118

Email | PublicInvolvement@GarverUSA.com

Phone | 501-823-0730



For questions or comments regarding the I-30 Deck Park Planning Study, please use the following information to contact us:

Mail to Garver, Attention: Keegan Doan, 4701 Northshore Drive, North Little Rock, Arkansas 72118.

Email to PublicInvolvement@GarverUSA.com.

Lastly, you can call the phone number on your screen. 501-823-0730.



THANK YOU FOR YOUR PARTICIPATION!



Thank you for your participation in Community Engagement Meeting #1. Your involvement and voice matters!