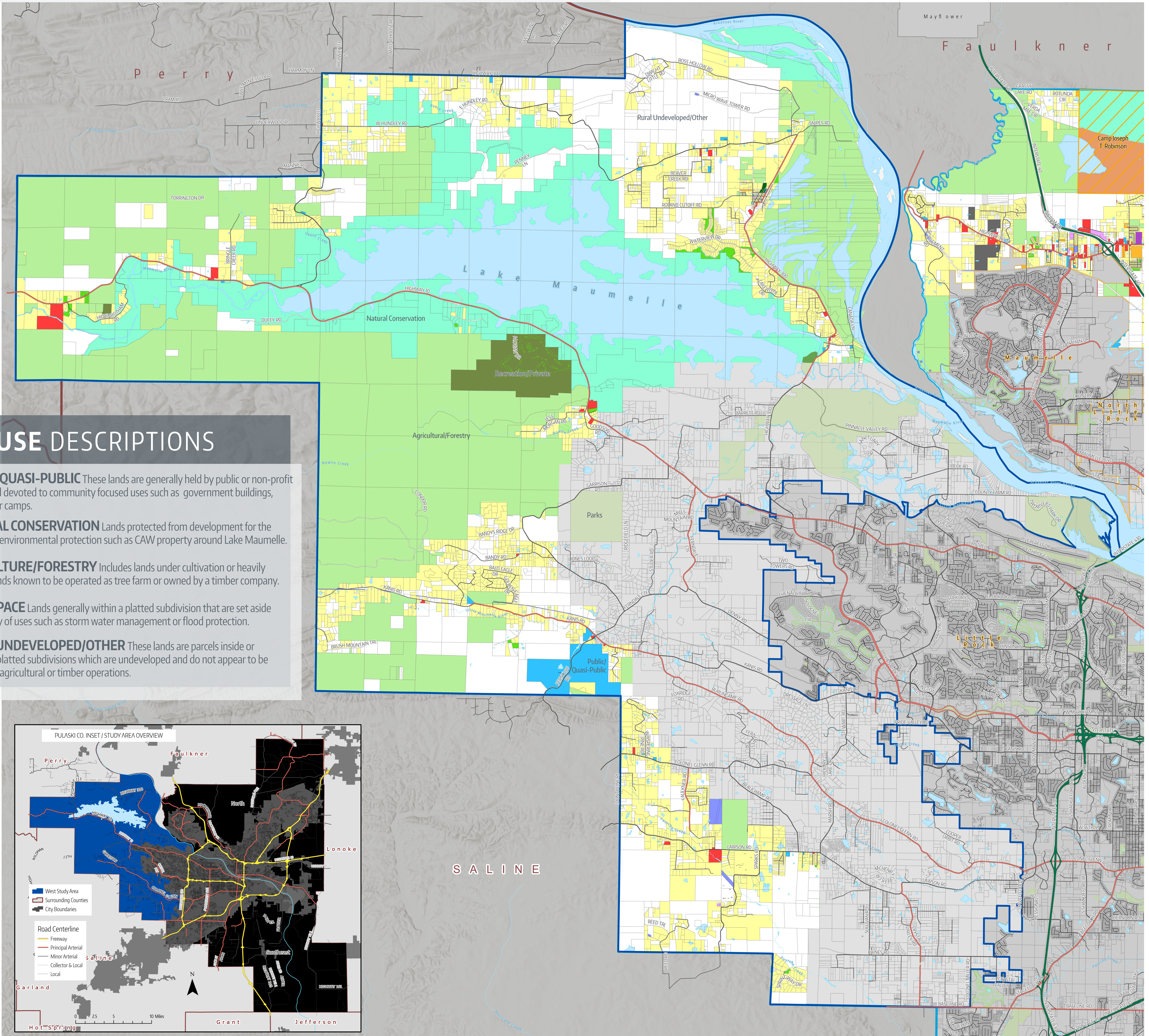
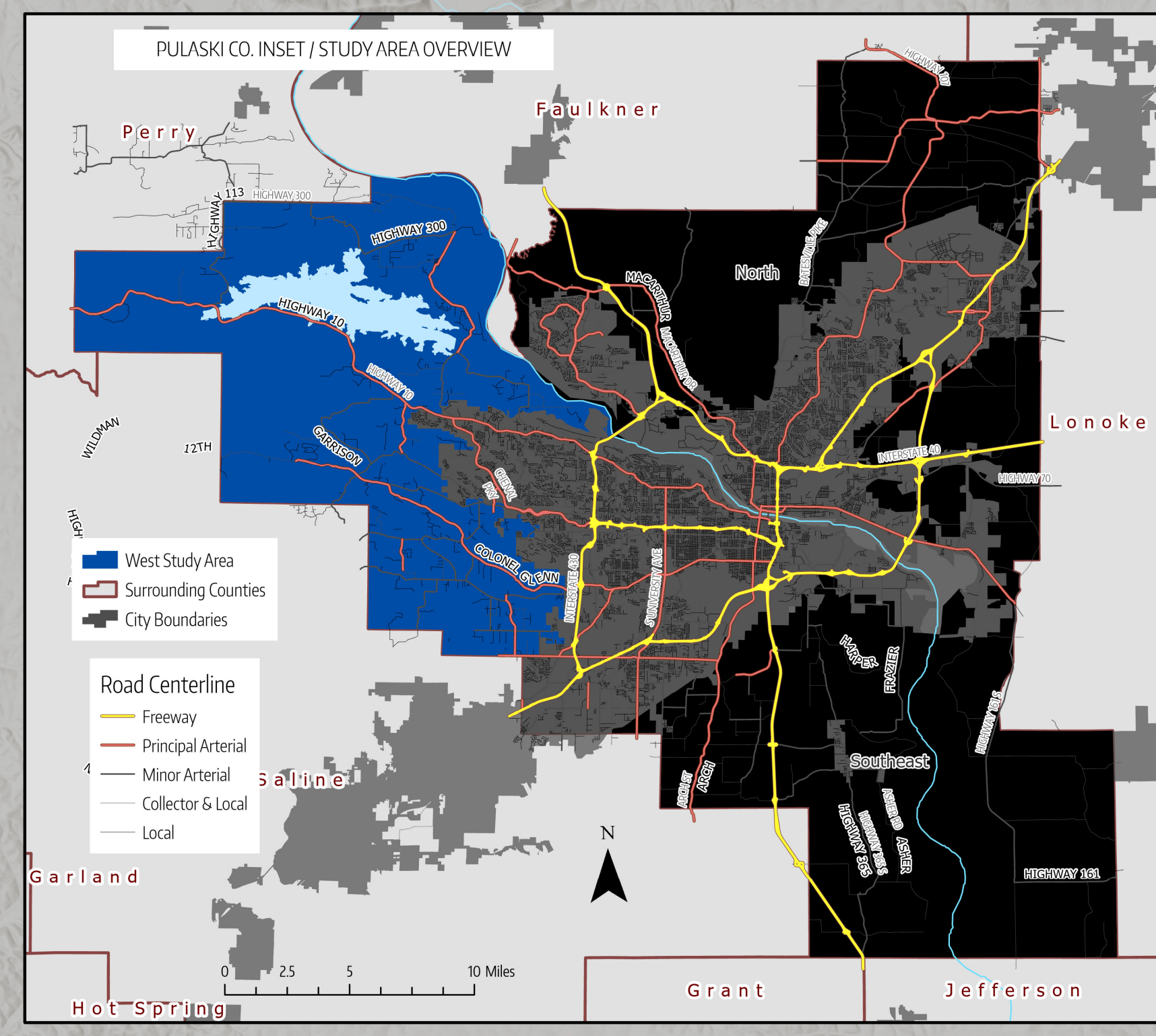


SUB AREA MAPS: WEST



LAND USE DESCRIPTIONS

- PUBLIC/QUASI-PUBLIC** These lands are generally held by public or non-profit entities and devoted to community focused uses such as government buildings, churches, or camps.
- NATURAL CONSERVATION** Lands protected from development for the purpose of environmental protection such as CAW property around Lake Maumelle.
- AGRICULTURE/FORESTRY** Includes lands under cultivation or heavily forested lands known to be operated as tree farm or owned by a timber company.
- OPEN SPACE** Lands generally within a platted subdivision that are set aside for a variety of uses such as storm water management or flood protection.
- RURAL UNDEVELOPED/OTHER** These lands are parcels inside or outside of platted subdivisions which are undeveloped and do not appear to be large-scale agricultural or timber operations.

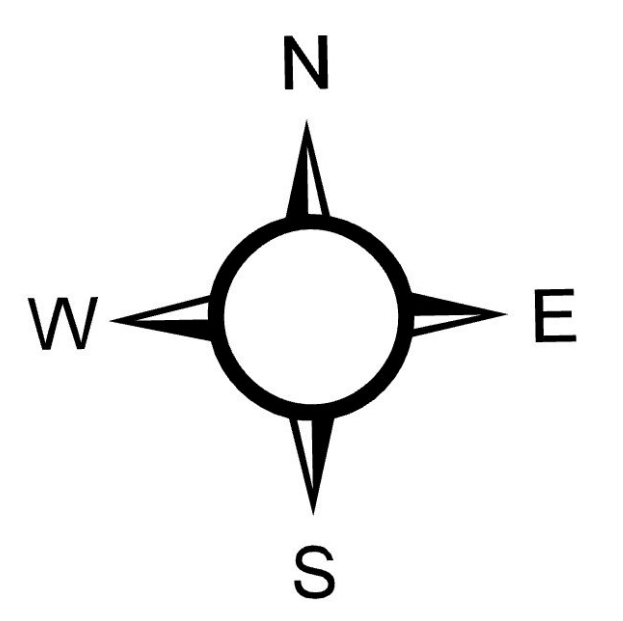


LEGEND

- Parcels
- West Study Area
- Parks
- Golf Courses
- Military Installations
- City
- Surrounding City
- Pulaski Co. Boundary
- Surrounding County Boundary
- Little Rock & North Little Rock Zoned Areas
- Road Centerline
 - Freeway
 - Principal Arterial
 - Minor Arterial
 - Collector & Local
- Existing Land Use
 - Single-Family
 - Multi-Family
 - General - Commercial
 - Office
 - Quasi-Industrial
 - Industrial
 - Public / Quasi-Public
 - Natural Conservation
- Open Space
 - Agriculture / Forestry
 - Recreation - Public
 - Recreation - Private
 - Mining
 - Landfill
 - Military
 - Transportation / Utilities
 - Rural Undeveloped / Other



DATE: May 19th, 2023



WEST PULASKI COUNTY

West Pulaski County Sub Area Map and Area Demographics

POPULATION

2000	4,743
2010	4,918
2020	4,972



POPULATION BY GENERATION

Gen Alpha (2017 or Later)	5.2%
Gen Z (1999 - 2016)	18.6%
Millennials (1981 - 1998)	17.4%
Gen X (1965 - 1980)	21%
Baby Boomers (1946 - 1964)	32.2%
Greatest/Silent (1945 or Earlier)	5.6%

EDUCATION

GED/Diploma	91.1%
Some College	61%
Bachelor's Degree	37.1%
Graduate Degree	14.9%

RACE

White alone	86.10%
Black alone	3.40%
American Indian alone	0.40%
Asian alone	0.70%
Pacific Islanders alone	0.10%
Other/2+	9.30%