

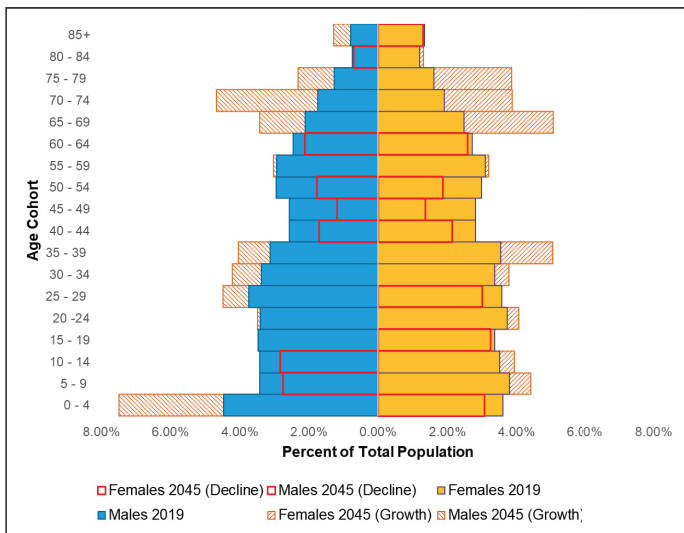
Demographics

Demographic Overview of the City of Temple MMP Study Area

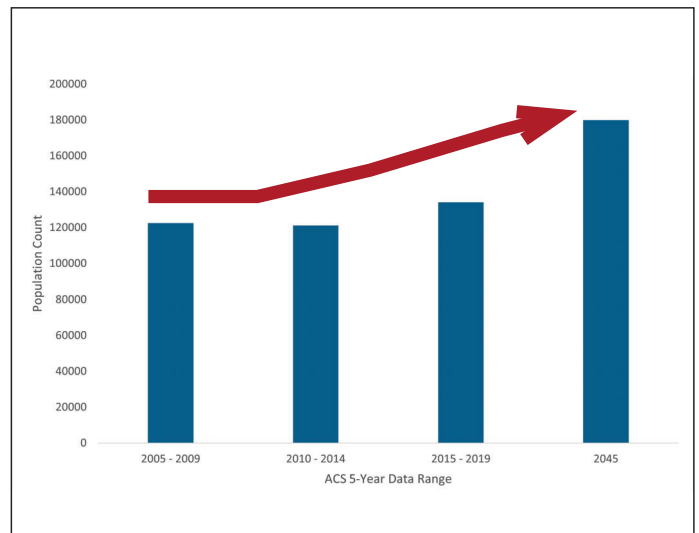
2019 Total Population	2045 Projected Population*	2018 Employment	2045 Projected Employment*	2019 Median Age	2019 HH Median Income	2019 Poverty Level
134,071	179,887	59,564	98,584	38	55,985	13%

Source: American Community Survey (ACS) 5 YR (2019) *Projected populations use TexPACK V 2.4 KT model

City of Temple and ETJ Population Pyramid (2019 and 2045)

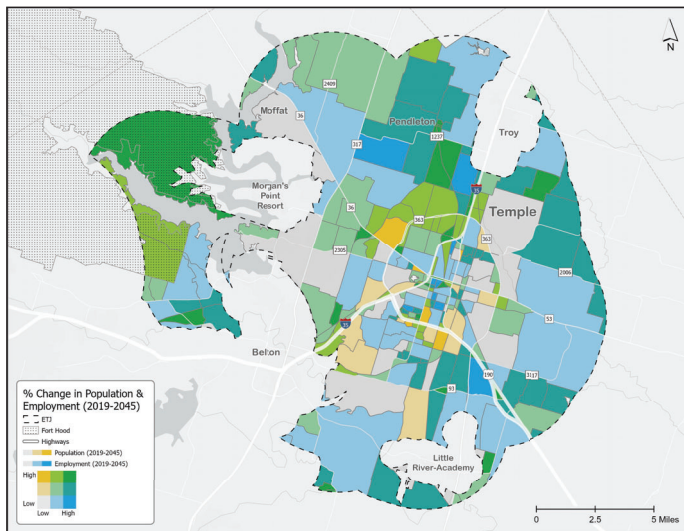


City of Temple ETJ Population (2005 - 2045)



Source: ACS 5 YR (2019), Decennial Census (2010)

% Change in Population and Employment 2019 to 2045



% Housing + Transportation Costs of Area Median Income

