

Welcome to the public meeting!

Here's what to expect:



Tell Us About Yourself

Fill out a mini survey to help us get to know *you*.



Project Team Presents

Learn what a mobility plan is, and what it means for Temple.



Provide Feedback

Tell us what matters most to you regarding mobility in Temple.



Project Team Presents

Learn about next steps and opportunities to provide input.



Q + A

Ask questions and speak with the project team directly.

**Fill out the
welcome survey!**



START HERE

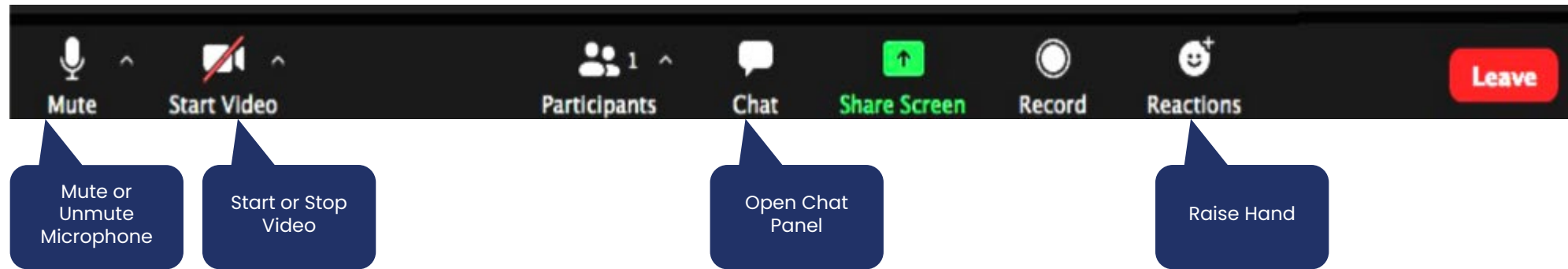


(scan me)

*OR type this link into
your internet browser:*

[https://forms.office.com/
r/FG2HvZgunN](https://forms.office.com/r/FG2HvZgunN)

Video Conference Instructions



- The **meeting menu bar** is on your device's screen and enables attendees to engage through camera, microphone, and written text
- **Please mute** your phone and computer microphones to begin
- Click *Chat* to **access chat box** during the meeting
- At any time during the meeting, you may **type a question or comment** in the chat box
- At set times, the project team will invite you to **unmute your microphone to ask a question or make a comment.**

Mobility Master Plan

Public Meeting #2 – January 19, 2022



Meeting Agenda



Project Schedule



Scenario Analysis



Public Engagement Efforts



Preliminary Recommendations



Comprehensive System
Assessment Review



Next Steps

Temple MMP Video

Use the link to view the Temple MMP Introduction Video:

<https://vimeo.com/667855308/1191ff5be7>

How to Submit Your Comments



1

Fill out the comment form.



Write your comments on the handout and drop it in the comment box.

OR



Complete the comment form on the project website: templetx.gov/mobility

2

Fill out the survey.



Complete the survey and drop it in the comment box.

OR



Complete the survey with a provided laptop at the meeting.

OR



Use the QR code to complete the survey with your own device.

3

Comment on the map.



Leave your comments on the city map exhibit.

OR



Leave your comments on the interactive map with a provided laptop at the meeting.

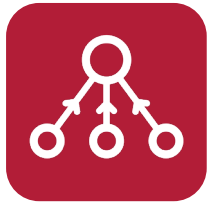
OR



Leave your comments on the interactive map on the project website: templetx.gov/mobility

What is a Mobility Master Plan?

"A strategic plan to improve the movement of people and goods in a community."



Unifying



Community



Strategic



Progressive



Multimodal Transportation Plan



Active Transportation Plan



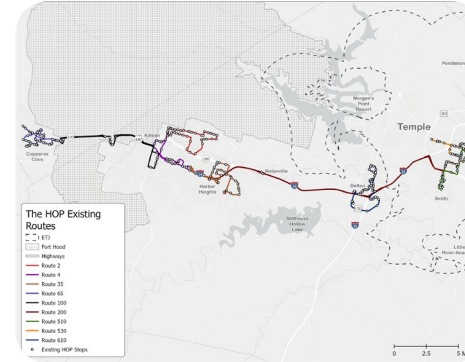
Conceptual Transit Plan



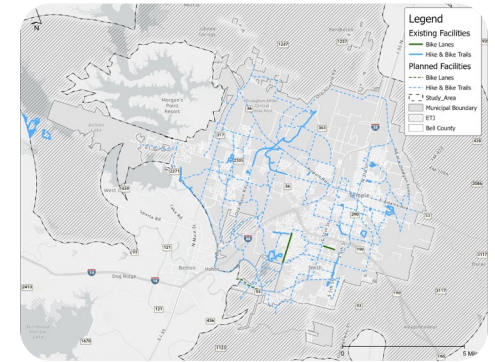
Capital Improvement Plan and Implementation



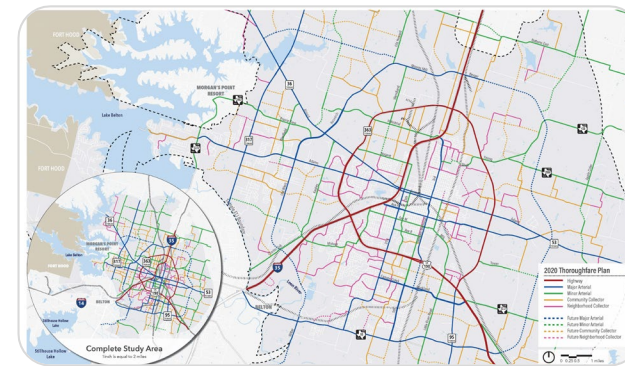
Temple Mobility Plan Report



Transit Vision Plan

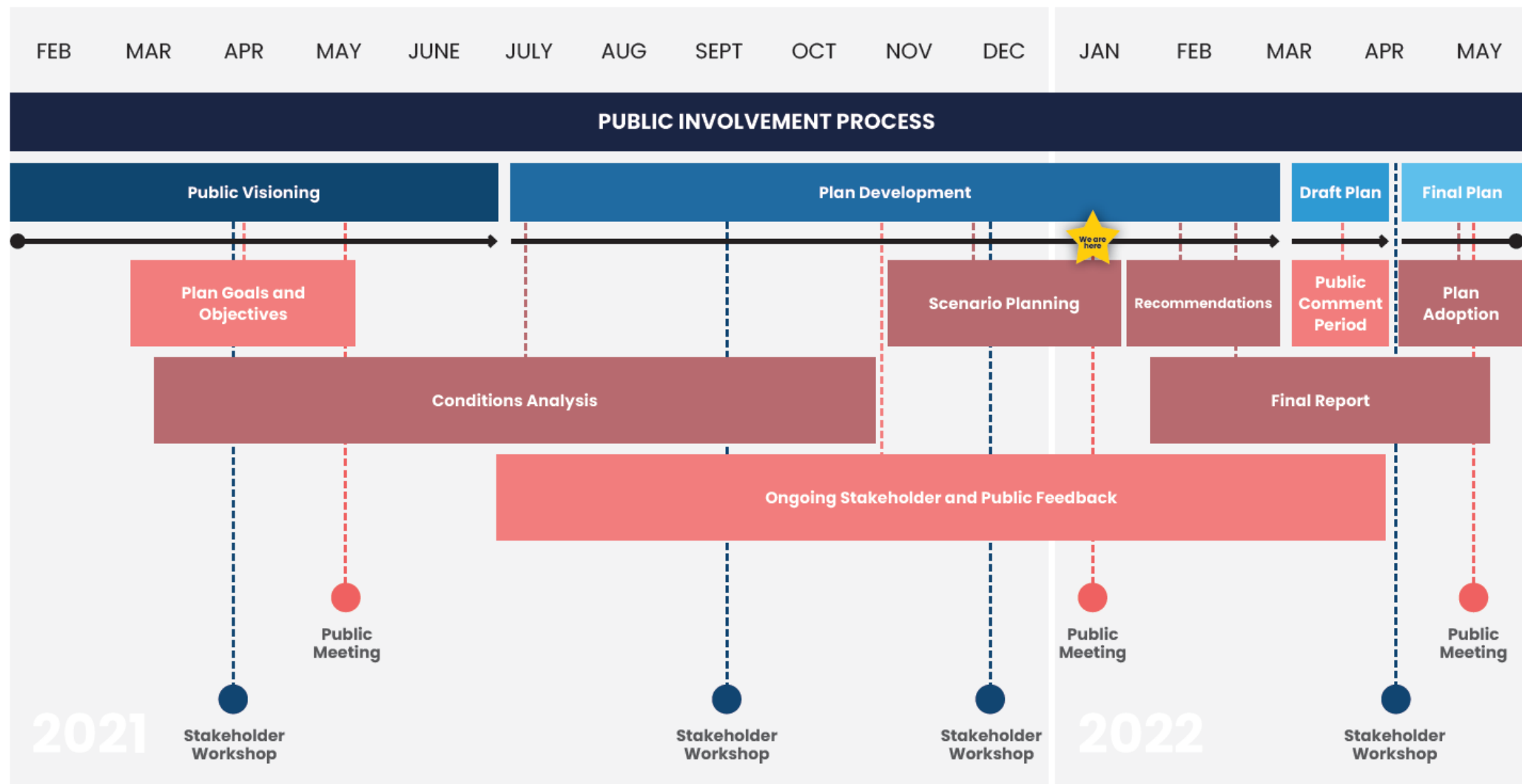


Active Transportation Plan

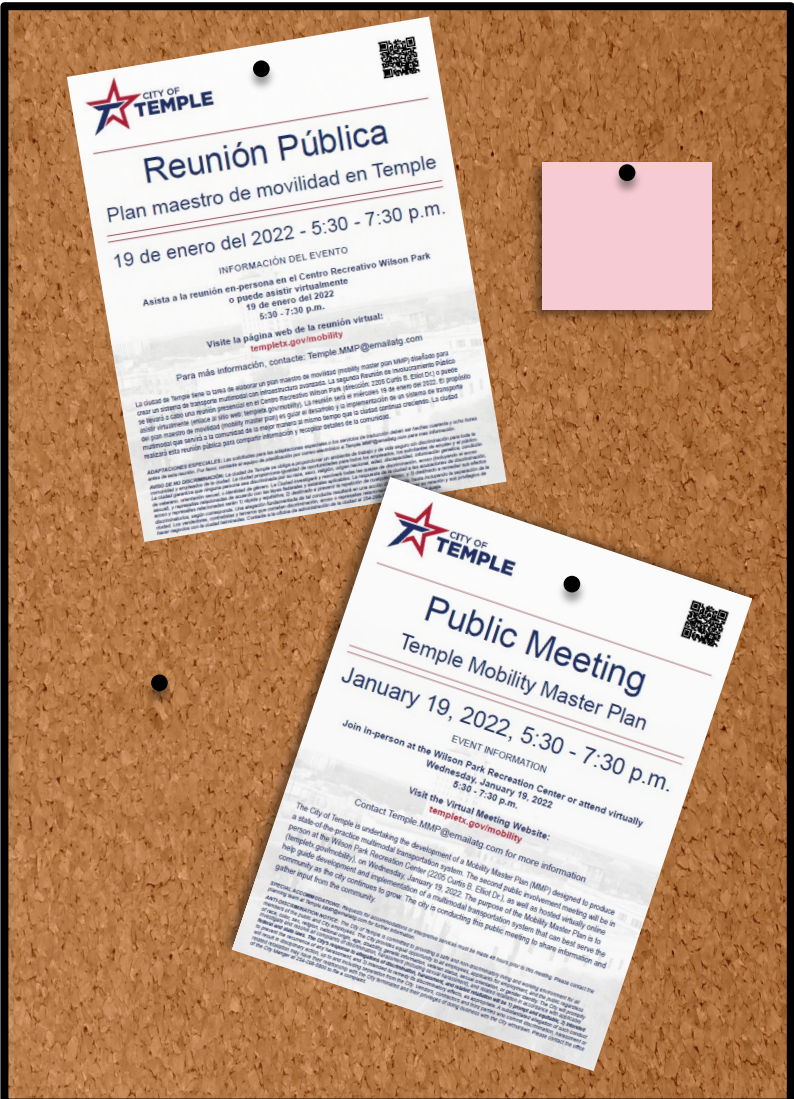


Thoroughfare Plan

Project Schedule



Public Engagement Efforts



What We've Heard So Far

CHALLENGES

- Sit in traffic too long
- Difficulty getting across town
- Walking to work, school, or grocery stores
- Transit difficult to use or not available
- Accessibility

NEEDS

- More pedestrian/bike facilities
- Safer pedestrian infrastructure
- Handicap transportation, including accessible sidewalks and vehicles
- More efficient and available transit system
- Actionable Plan

Vision

An inclusive and equitable multimodal transportation network that provides safe, well connected, mobility choices to the City of Temple.

Goals:

Safety First

Choices

Connections

Prosperity

Fund and
Implement

Community
Driven

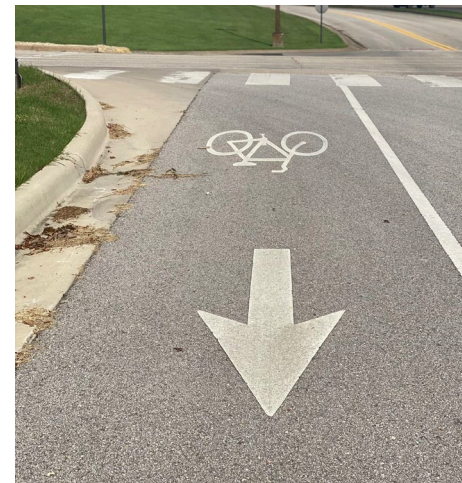
Mobility

Maintain
and Sustain

Quality of
Place

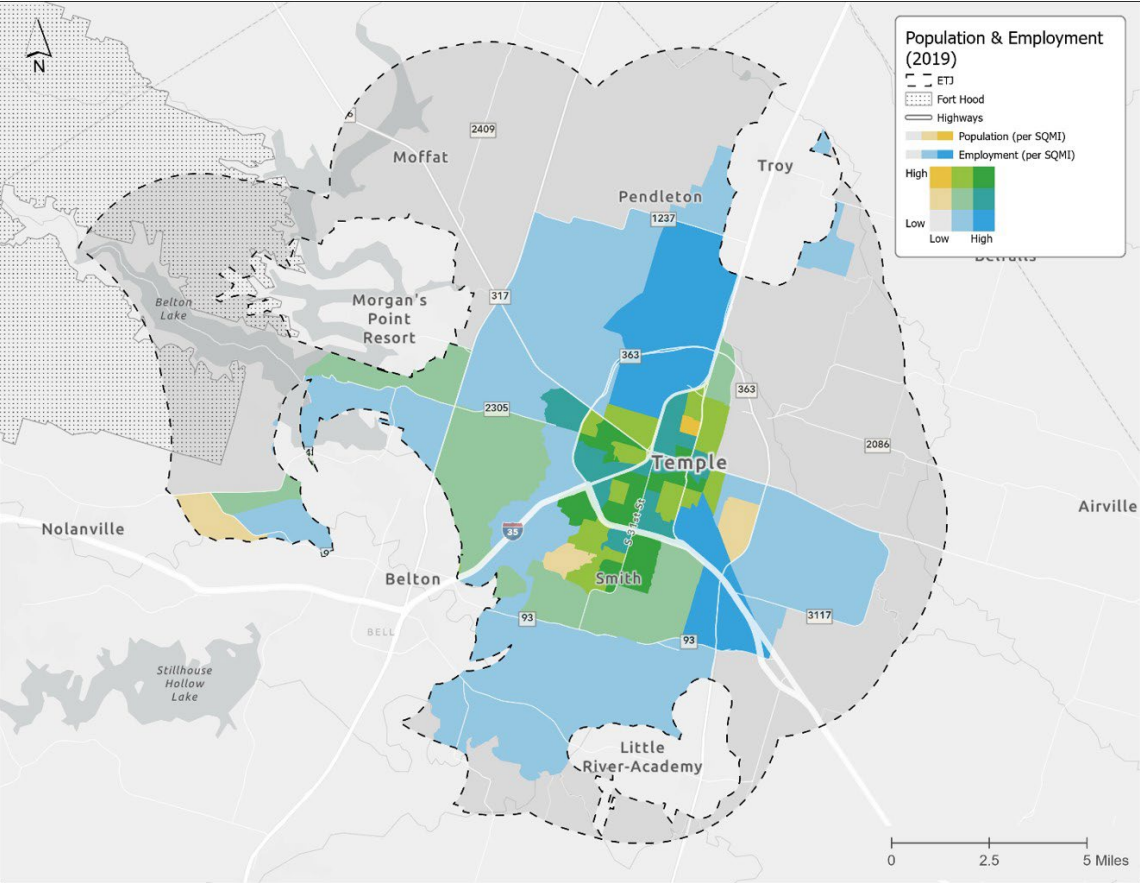


Comprehensive System Assessment Review

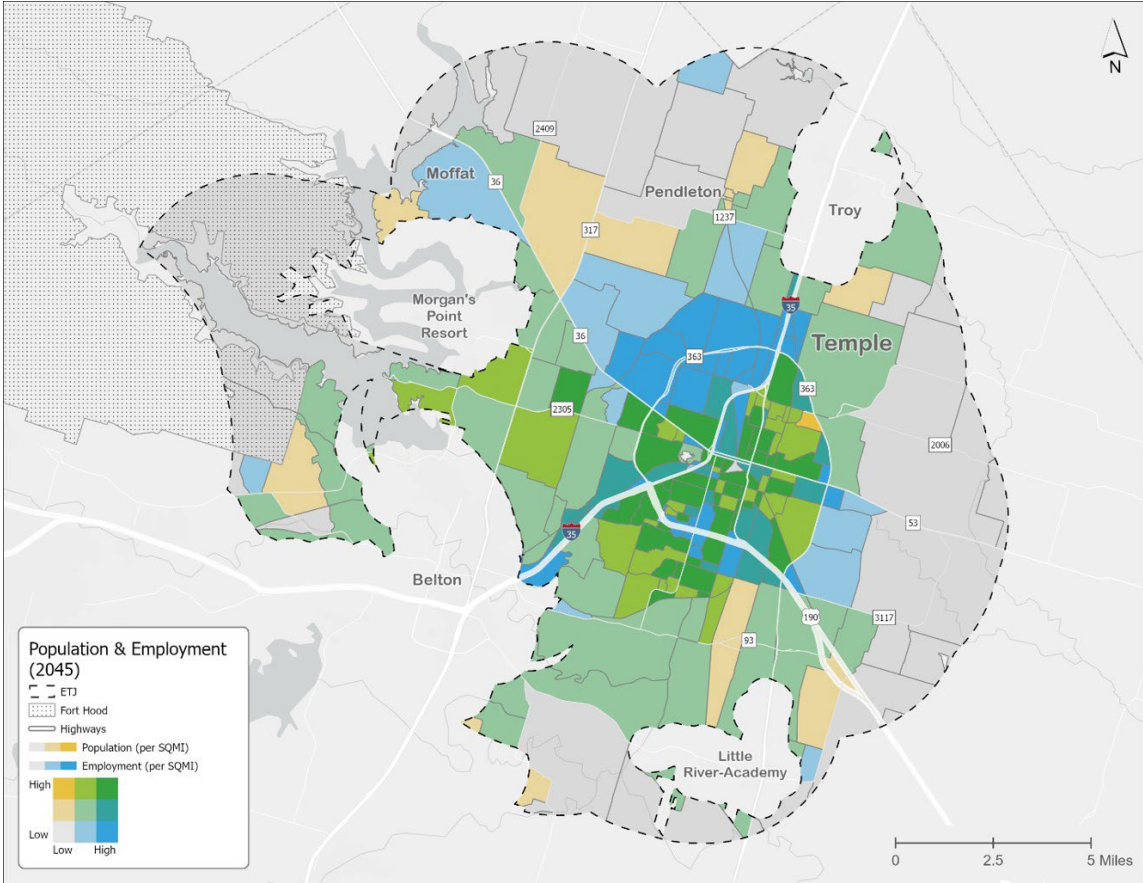


Comprehensive System Assessment

POPULATION AND EMPLOYMENT (2019)



POPULATION AND EMPLOYMENT (2045)

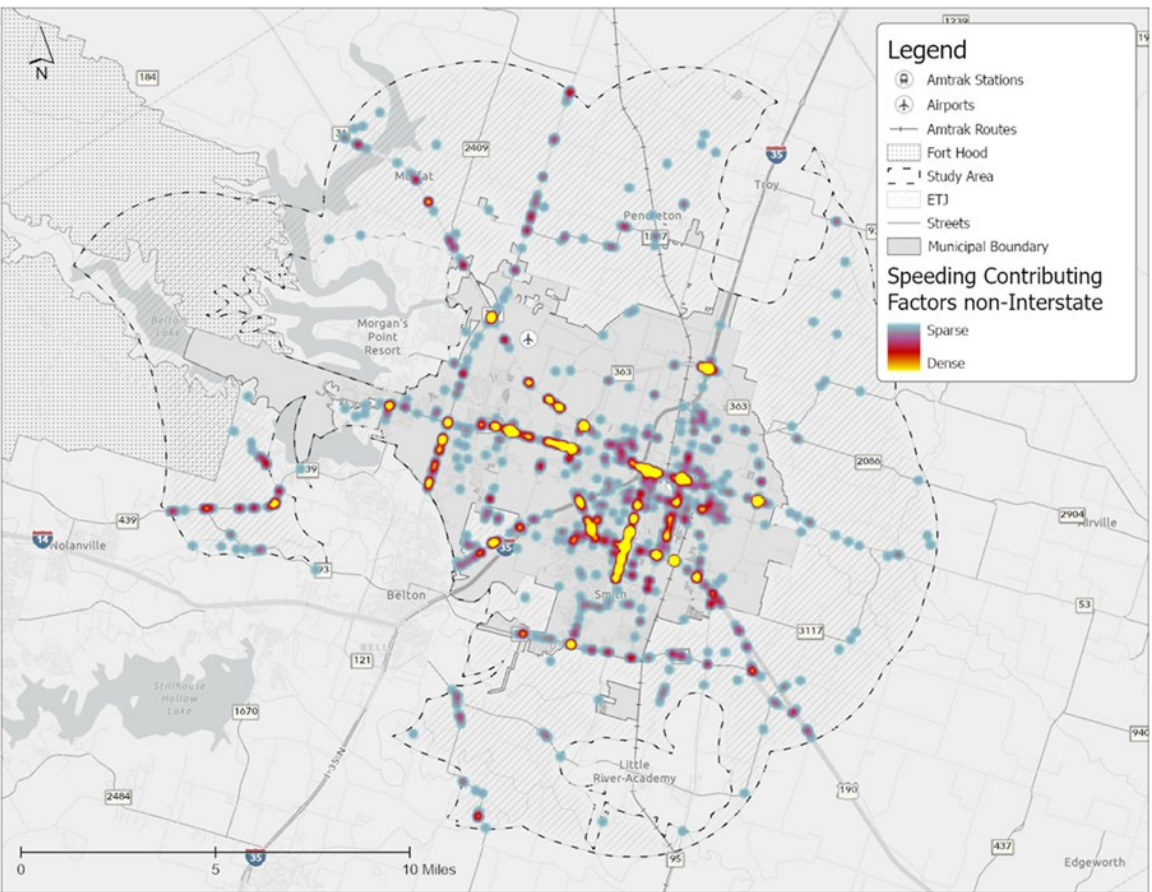


Comprehensive System Assessment

SAFETY ANALYSIS

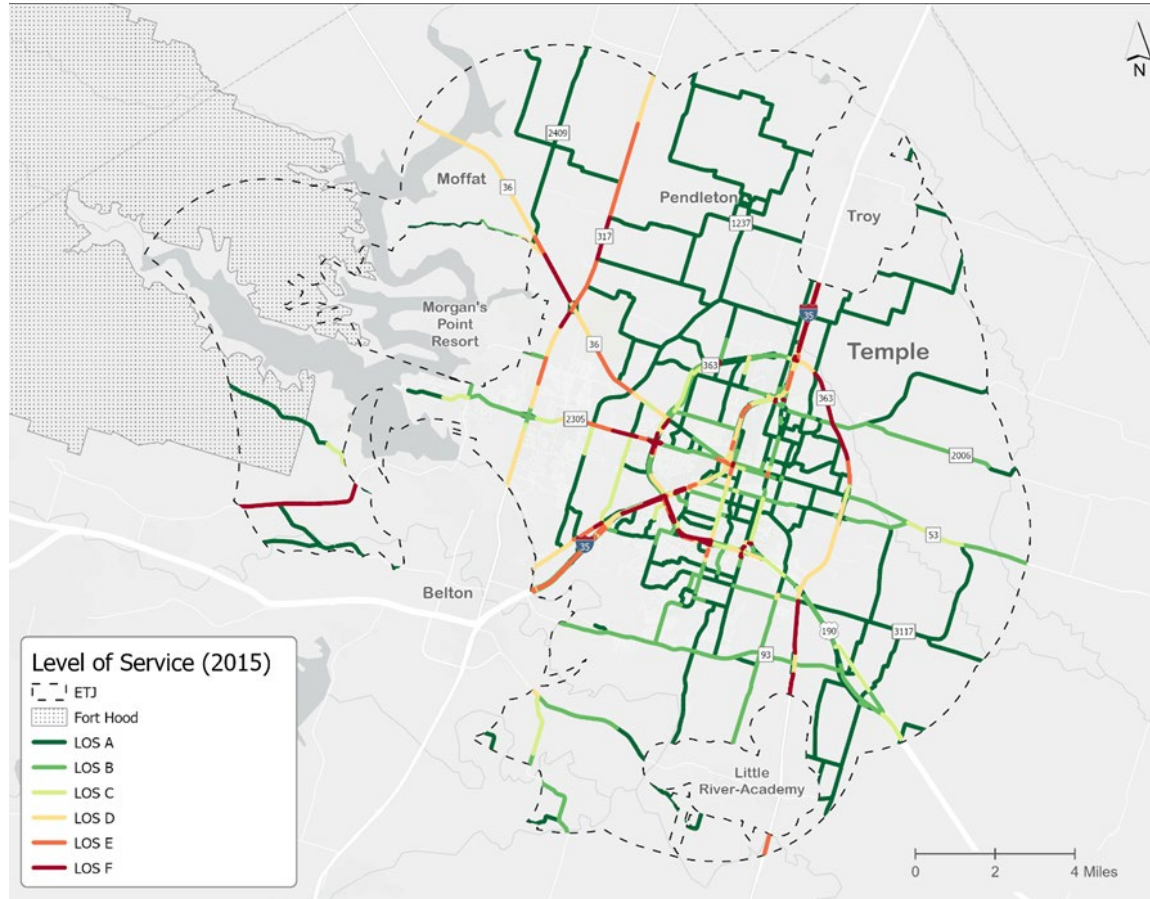


SPEEDING-RELATED CRASHES

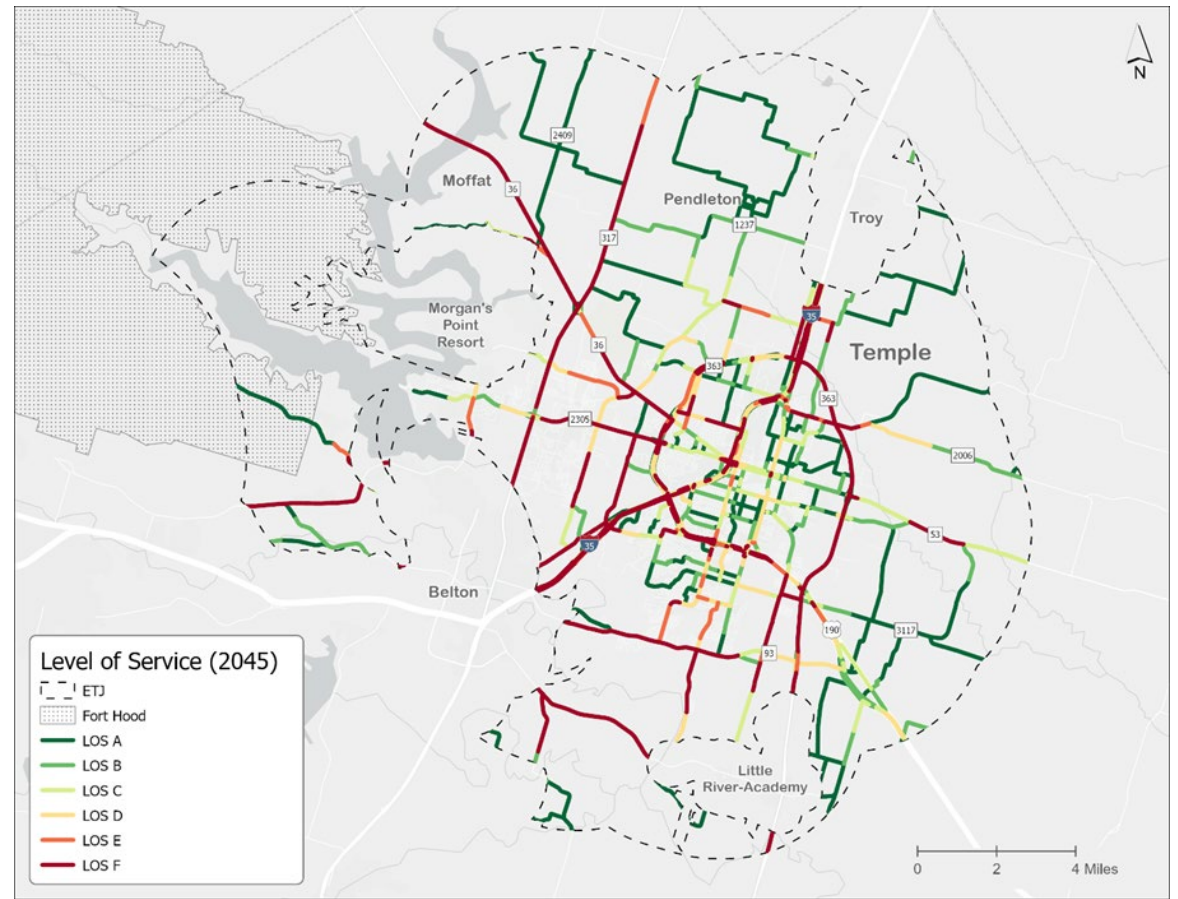


Comprehensive System Assessment

2015 LEVEL-OF-SERVICE



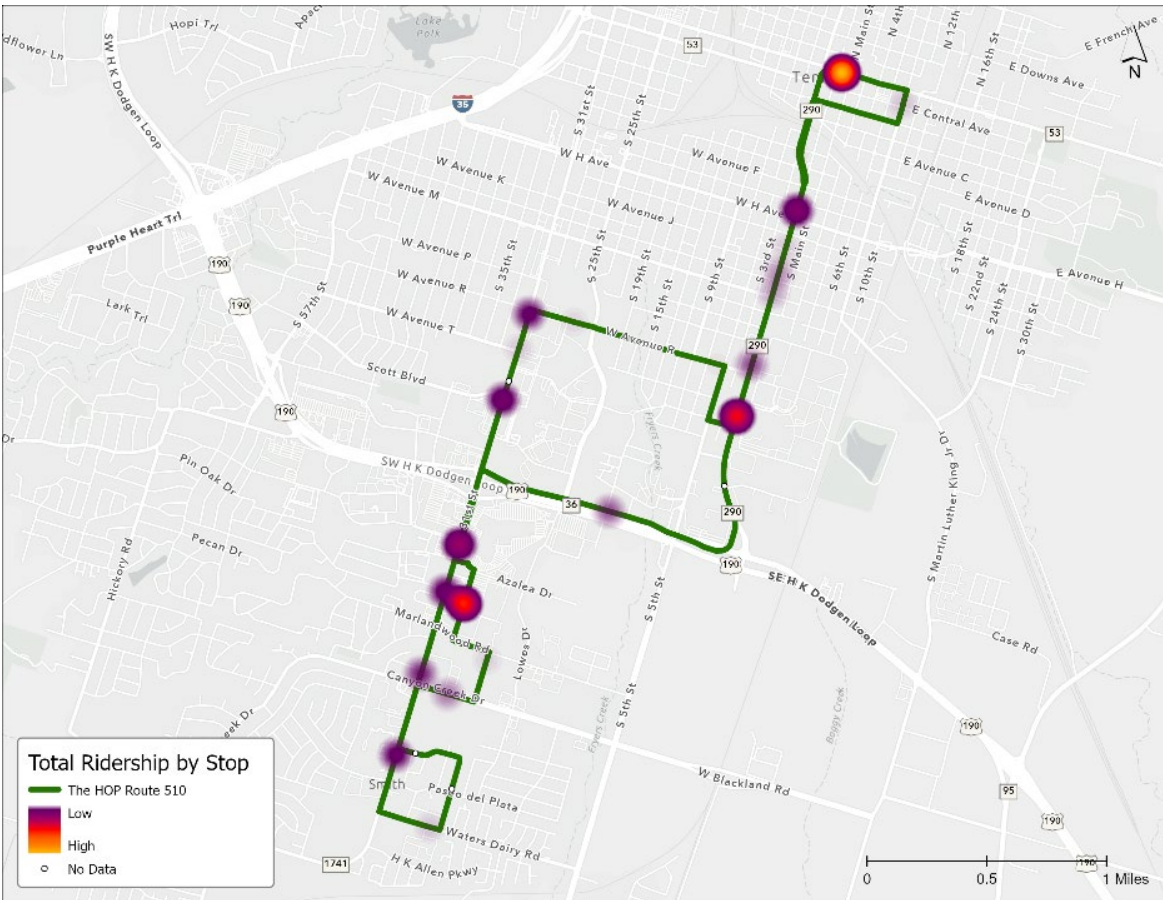
2045 LEVEL-OF-SERVICE



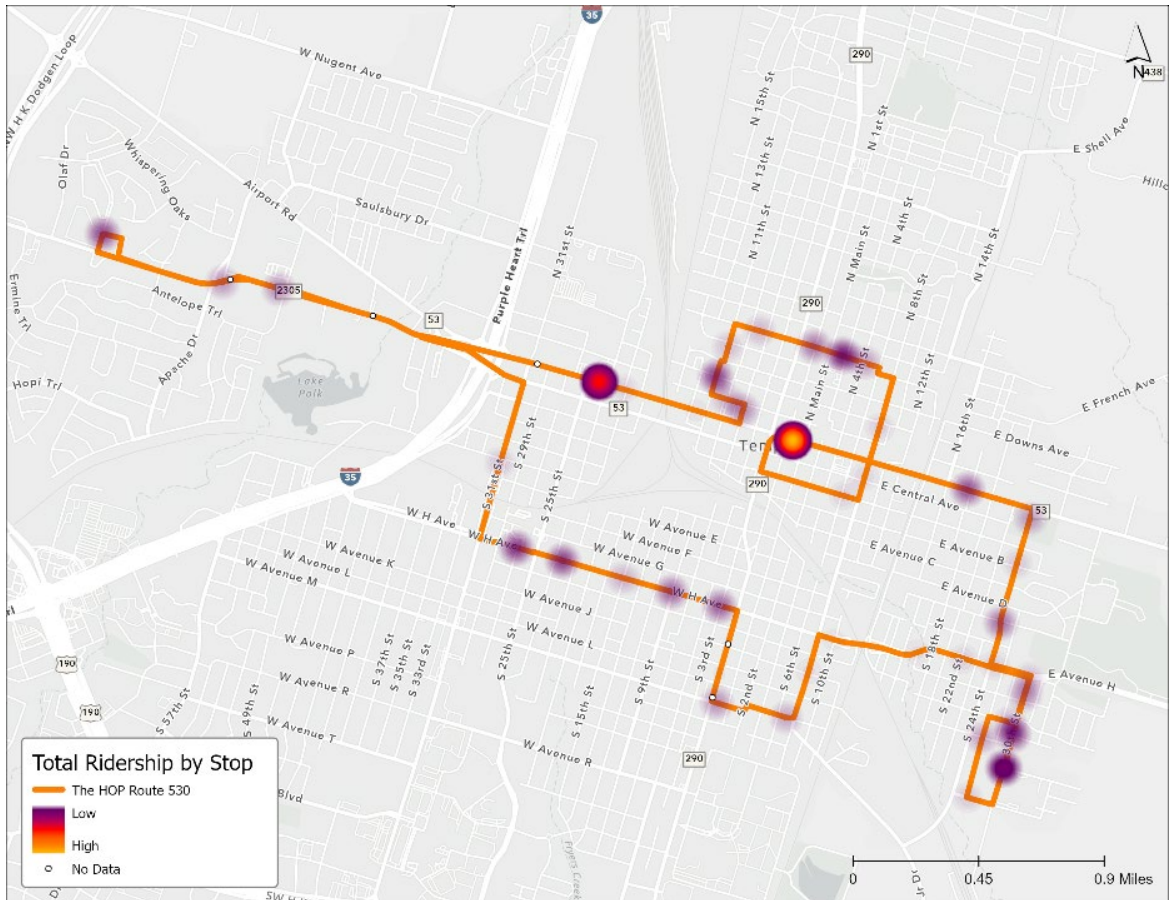
LEVEL OF SERVICE DEFINITION: THE OPERATING CONDITIONS OF A ROADWAY BASED ON FACTORS SUCH AS SPEED, TRAVEL TIME, MANEUVERABILITY, DELAY, AND SAFETY.

Comprehensive System Assessment

TRANSIT EXISTING CONDITIONS



Route 510 Ridership by Stop

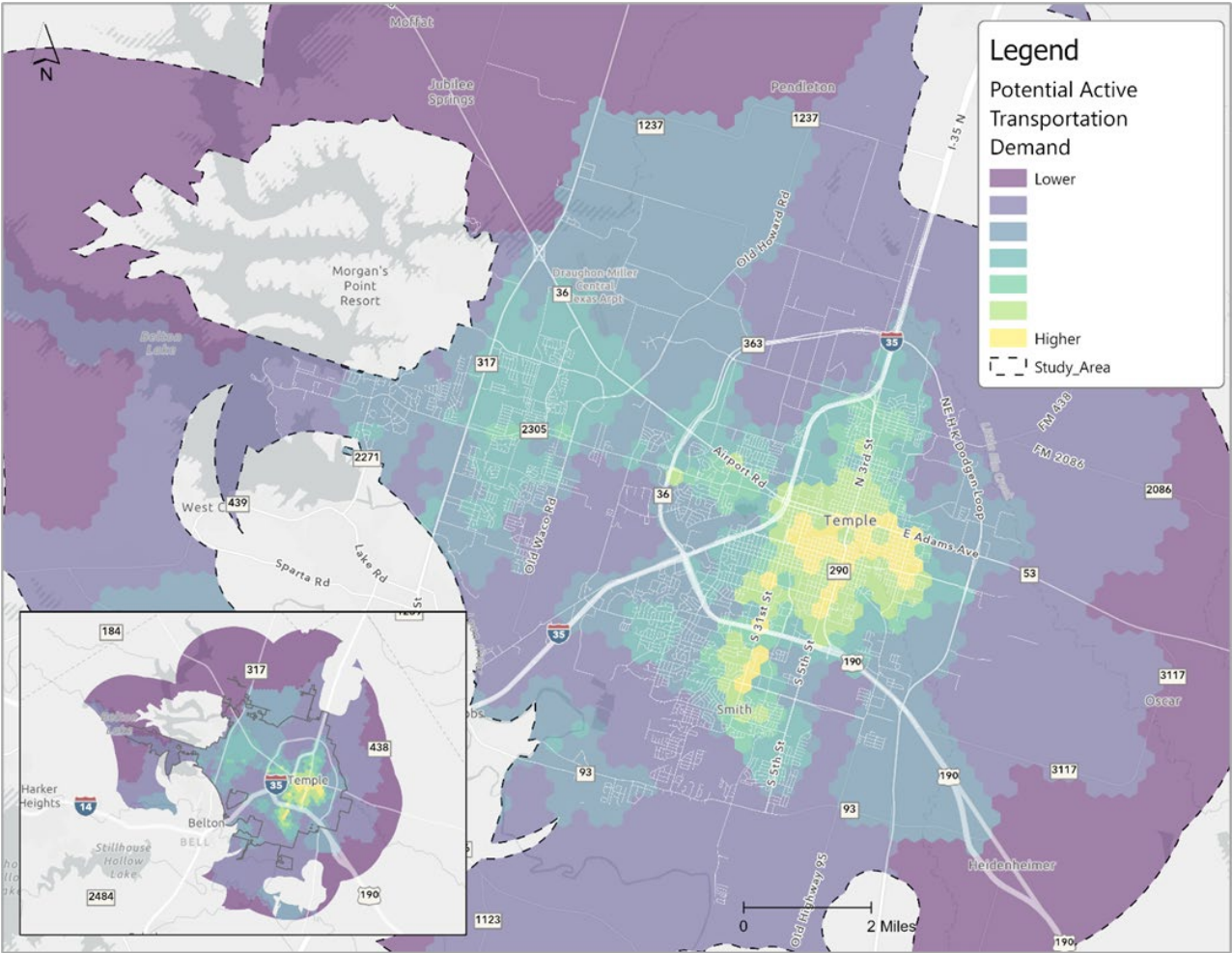


Route 530 Ridership by Stop

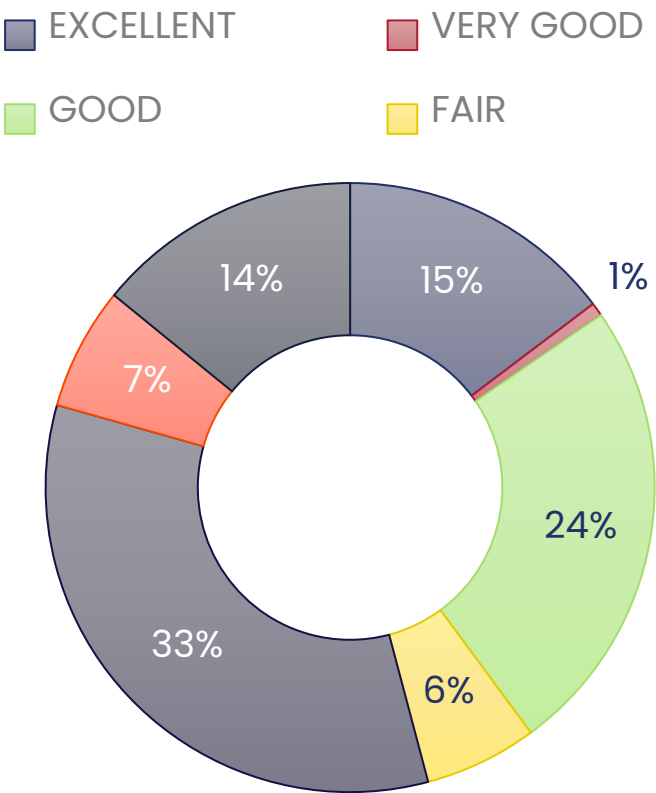


Comprehensive System Assessment

ACTIVE TRANSPORTATION

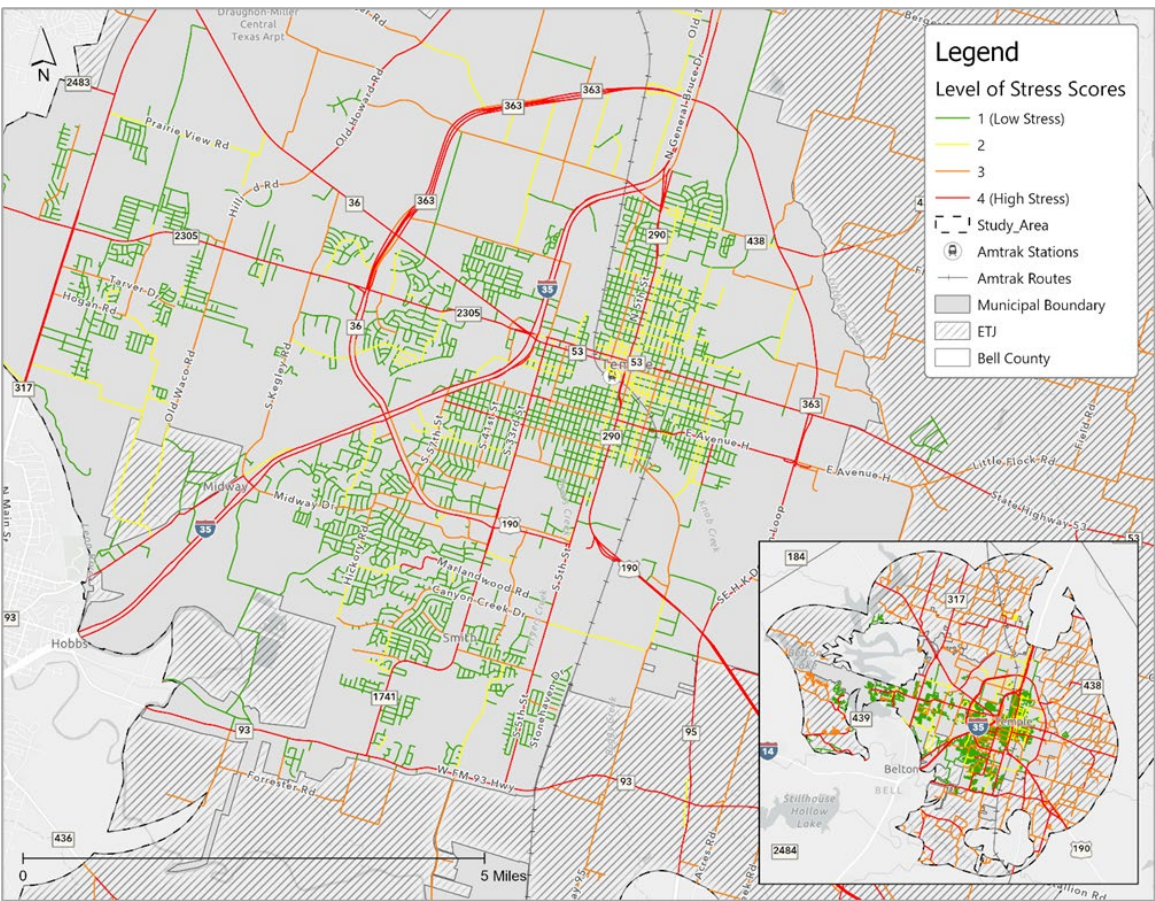


Sidewalk Condition in City of Temple

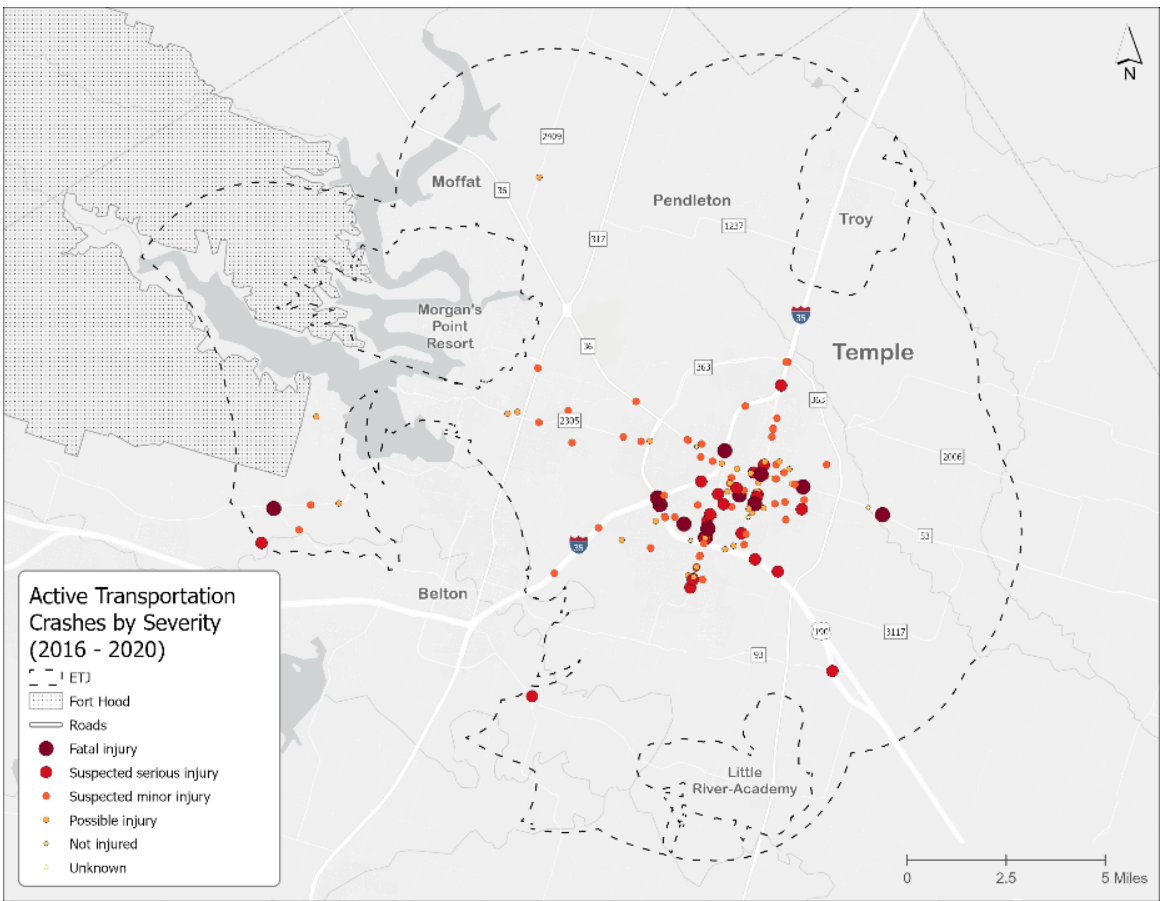


Comprehensive System Assessment

ACTIVE TRANSPORTATION



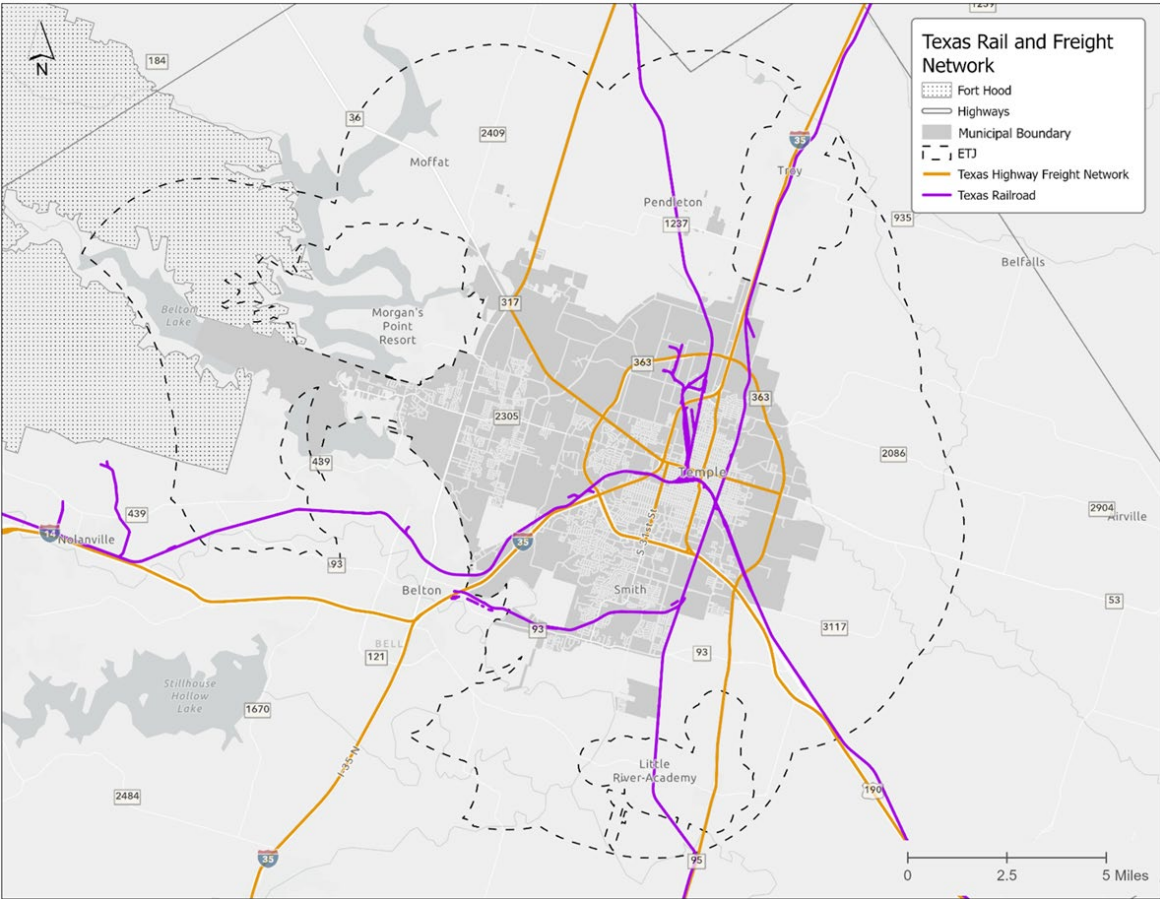
Level of Stress



Active Crashes by Severity

Existing Conditions Analysis

FREIGHT NETWORK



COMMODITY FLOWS



Scenario Analysis

Scenario 1



Traffic Signal and Intersection Optimization

Optimize traffic signals and intersection performance by identifying improvements to intersection with an LOS of D or lower.

Scenario 2



Systemwide Roadway Improvements

Analyze and identify Improvements to roadway segments with an LOS of D or lower.

Scenario 3



Regional Connectors

Add in improvements to major arterial roadways or higher to identify potential improvements to cross-town and regional trips.

Scenario Analysis

Scenario 4



Transit Vision

Review of additional access and transit mode choice improvements to communities. Focus on identifying route alternatives and approximate stop recommendations for underserved and socially vulnerable people.

Scenario 5



Active Transportation Improvements

Analyze how the addition of active transportation facilities / infrastructure benefits the character of the community and the quality of place as well as the health and well-being of the community.

Scenario 6

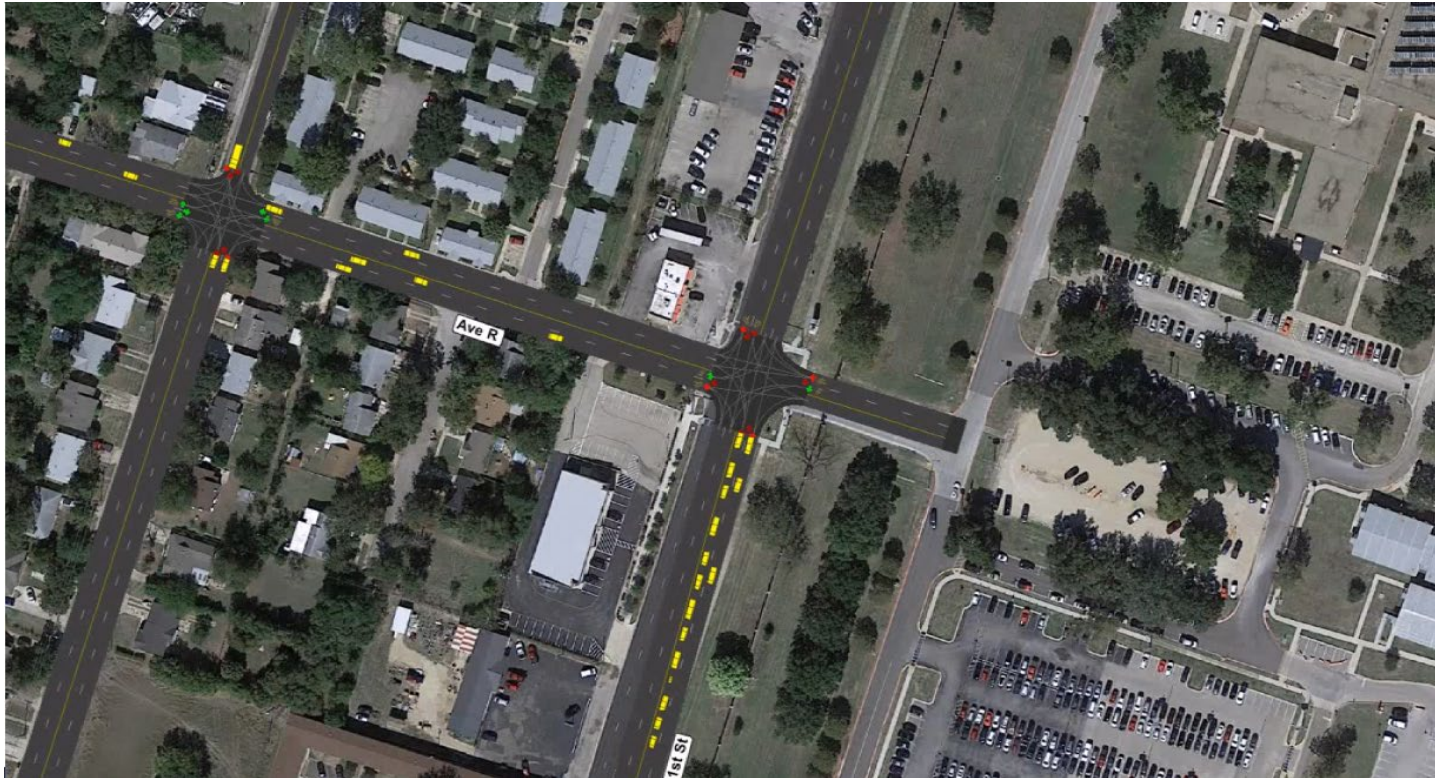


Emerging Technology & TSMO

Potential impacts (curbside management, parking restrictions/access, delivery) based on new policy or program recommendations for car sharing, bike sharing or scooter programs.

Preliminary Recommendations

- Intersections
 - Signal Optimization
 - AM – 45 to 29 Intersections
 - PM – 55 to 39 Intersections
 - Operational and Planning Level Design Improvements
 - 31 Intersections upgraded from failing to a passing level-of-service



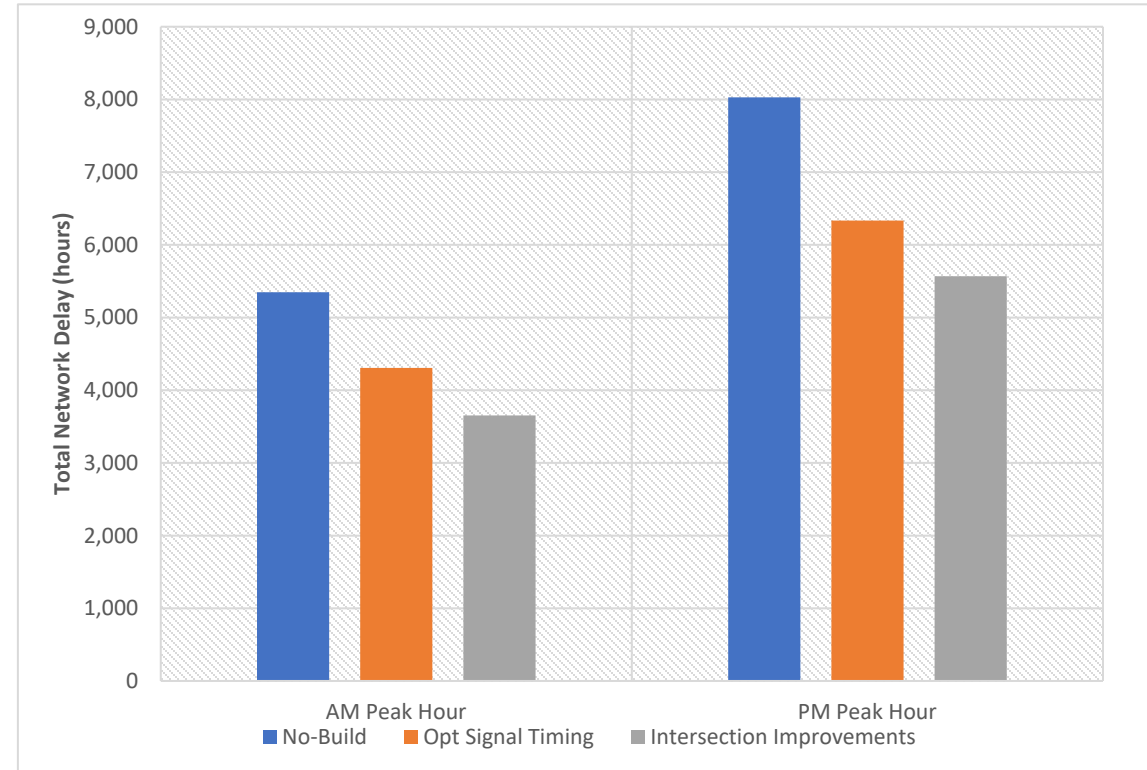
Traffic Congestion and Level of Service Video

Use the link to view the Traffic Congestion and Level of Service Video: <https://vimeo.com/667856717/8f5b14982d>

Preliminary Recommendations

TRAFFIC CONGESTION AND LEVEL OF SERVICE RESULTS

Total Network Delay				
	AM Peak Hour	PM Peak Hour	AM % Change	PM % Change
No-Build	5,347.3	8,028.8	-	-
Phase 1 Optimize Signal Timing	4,306.8	6,334.4	-19%	-21%
Phase 2 Intersection Improvement	3,652.9	5,568.7	-15%	-12%
Total Reduction	-1,694.4	-2,460.1	-46%	-44%



Preliminary Recommendations

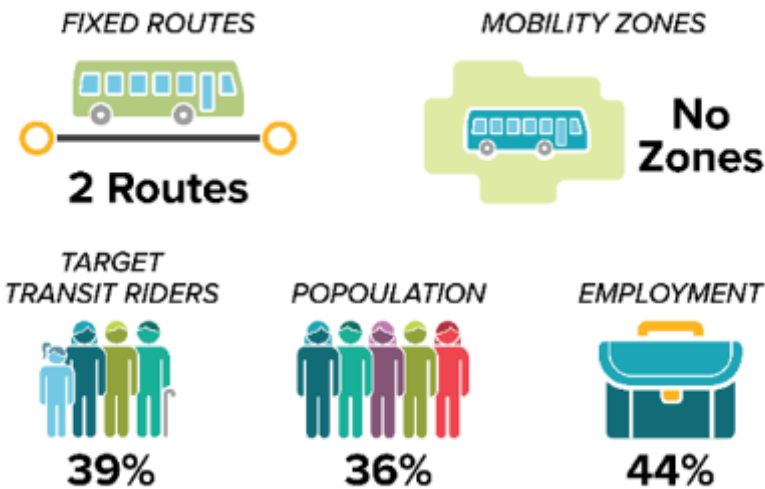
TRANSIT

- Route and Stop Analysis

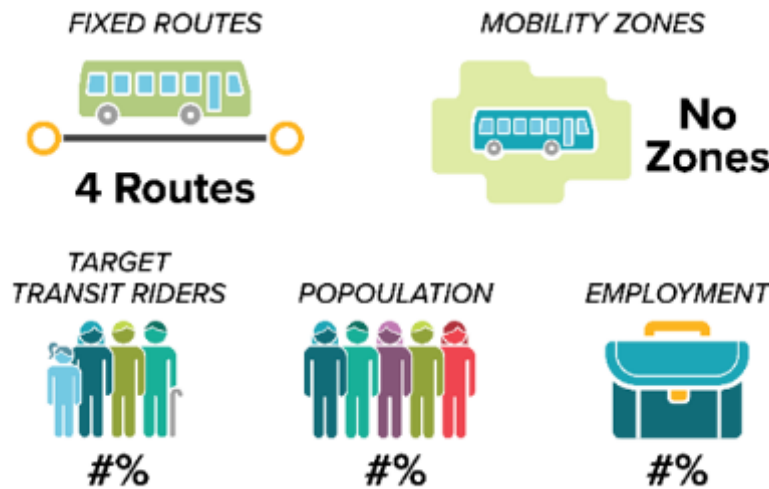
Alternative A

How do the existing Temple routes compare to Alternative A?

EXISTING COVERAGE



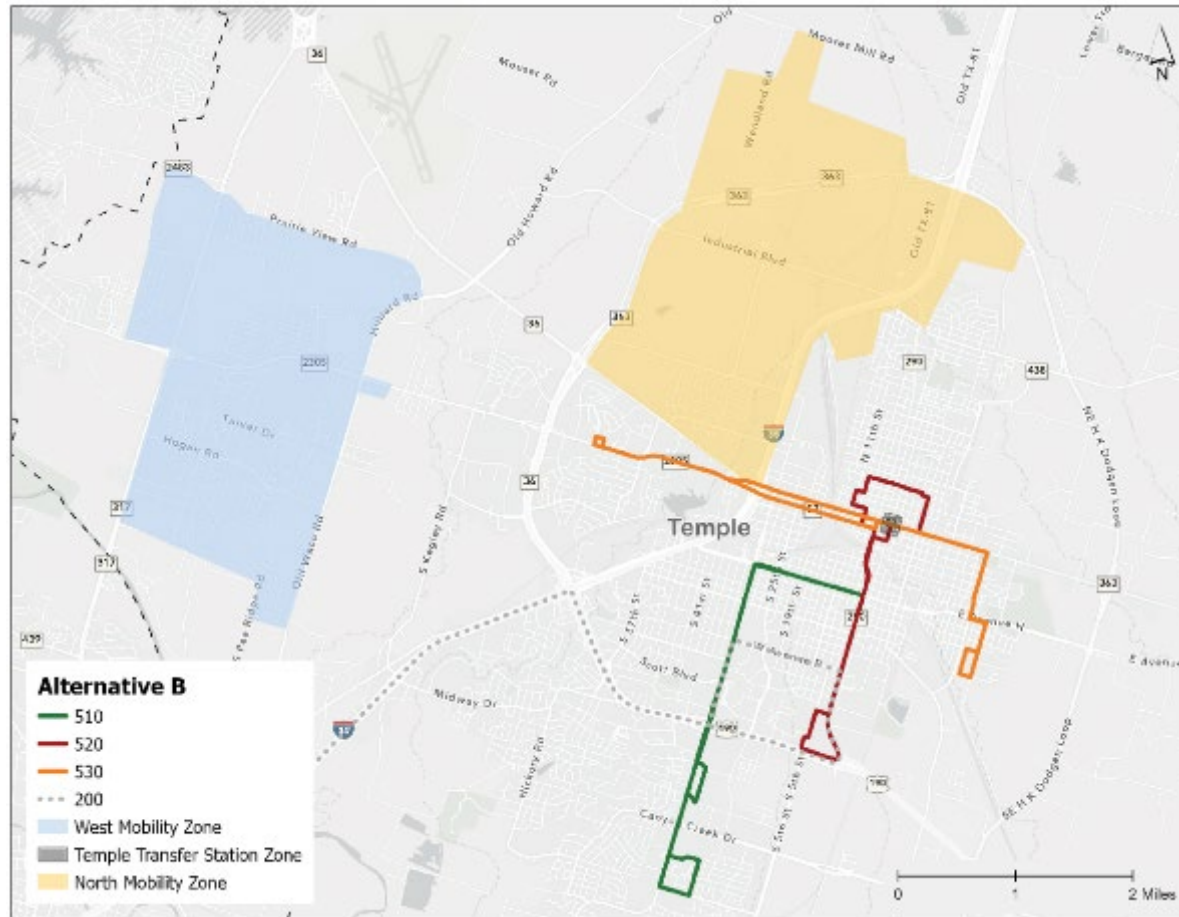
ALTERNATIVE A COVERAGE



Preliminary Recommendations

TRANSIT

- Microtransit/Mobility Zones



Microtransit, or on-demand transit is comparable to a fixed route bus.

- Passengers walk to meet a vehicle at a 'virtual bus stop' that may be up to $\frac{1}{4}$ or $\frac{1}{2}$ of a mile from their requested location.
- When booking a ride using the app, passengers will be able to clearly see a map showing the geographic zone in which service is offered.
- Requesting a trip beyond this zone is not possible, so passengers always know where the microtransit service is available.

Preliminary Recommendations

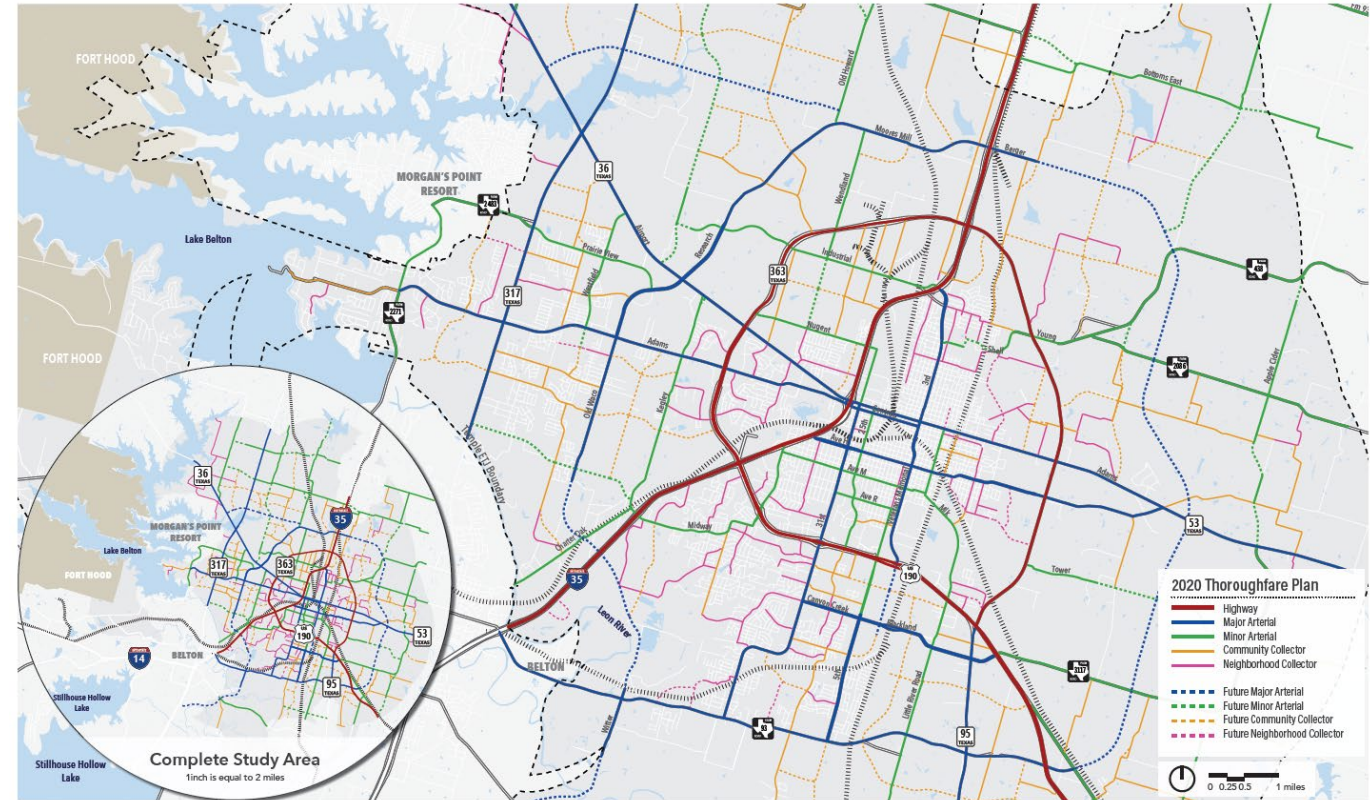
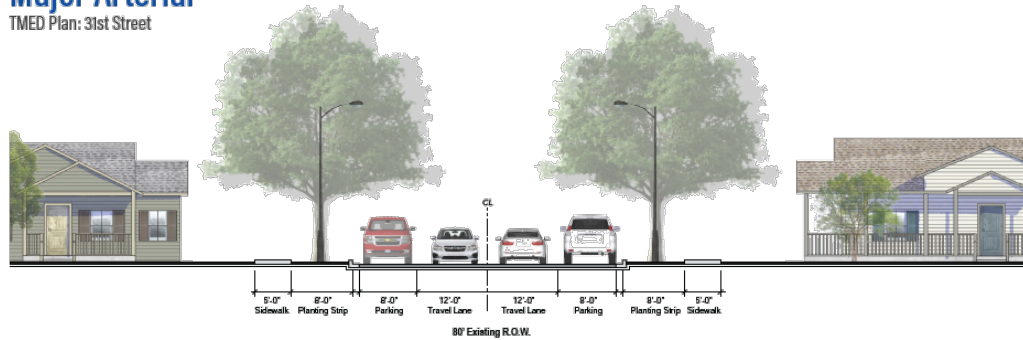
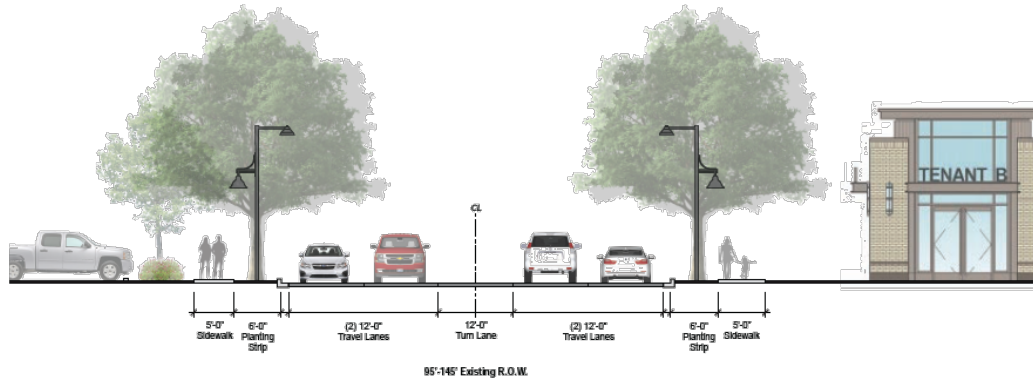
EMERGING TECHNOLOGIES - POLICY AND PROGRAM RECOMMENDATIONS:

- Micromobility and Shared Micromobility:
 - Policy Recommendations can be broken down to different categories where this modality changes the current regulatory and physical landscape: their physical presence and usage data. May publications list best practices for regulating and engaging with micromobility companies, they are listed below in the Resources section.
- Pilot Programs:
 - Pilot program utilizing emerging technologies to address transit needs. Review cities of similar scale as a model to look to for their pilot project work.
- Curbside Management and ADA Accessibility:
 - Standardize policies for the space between the sidewalks and streets to help the city understand, allocate, and manage curbside space more effectively. The management will inventory, optimize, and dedicate this space to maximize mobility, safety, and access for the wide variety of curb demands.
- Data:
 - From NACTO: "Data is a Public Good: Cities require data from private vendors operating on city streets to ensure positive safety, equity, and mobility outcomes on streets and places in the public right-of-way."¹

¹Managing Mobility Data, a joint product of the National Association of City Transportation Officials (NACTO) and the International Municipal Lawyers Association (IMLA). Retrieved from <https://nacto.org/managingmobilitydata/>

Upcoming Recommendations

THOROUGHFARE PLAN



Next Steps



Send in your
feedback

Stay engaged!

Public Meeting #3 in
May 2022

Provide Your Input

- **Written comments** may be submitted at tonight's meeting
- or by email to: temple.mmp@emailatg.com
- or mailed to:

Alliance Transportation Group
c/o Jim Harvey, AICP
11701 Stonehollow Dr., Ste. 100
Austin, TX 78758

- **An online comment form and printable version** are available at templetx.gov/mobility
- **An interactive map** with comment function is available online at templetx.gov/mobility

The image displays two components of the public input process. The top component is a 'Temple MMP Comment Form - Public Meeting #1'. It features three sections: '1. Name (optional)' with a text input field, '2. Email (optional)' with a text input field, and '3. Comment *' with a text input field. A red asterisk indicates that the comment field is required. The bottom component is a screenshot of an interactive map application. The map shows the Temple area with various streets and landmarks. On the right side of the map, there is a panel titled 'Edit' which includes a legend for creating features. The legend lists three types of features: 'Point layer', 'Line layer', and 'Polygon layer', each with a corresponding icon and a 'New Feature' button. The map interface also includes standard navigation controls like zoom in/out and a scale bar.

GIS Mapping Tool Instructions

Use the link to view the GIS Mapping Tool Instructions Video:

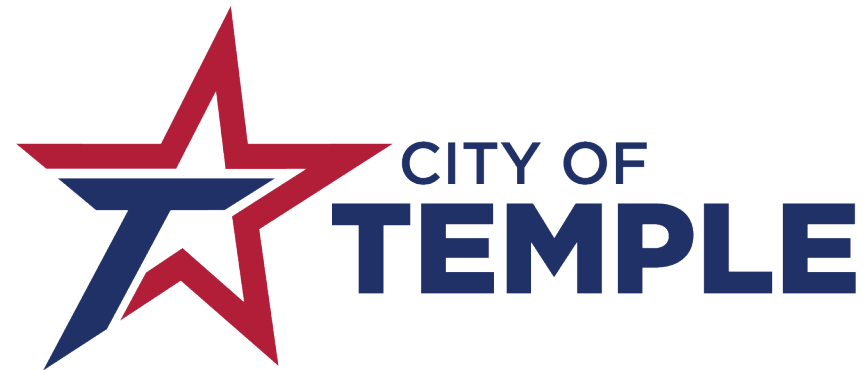
<https://vimeo.com/667852847/de0488f18d>

Audience Interaction and Feedback

Mobility Master Plan
Public Meeting #2

Contact Information

Temple.MMP@emailatg.com



- **Richard E. Wilson, P.E., CFM**
Project Manager
City Engineer
rwilson@templetx.gov
(254) 298-5667

- **Jason Deckman**
Project Manager
Senior Transportation Planner
jdeckman@templetx.gov
(254) 298-5668