



2040 Texarkana, AR
Comprehensive Plan

APPENDIX E

Texarkana Water Utilities (TWU)
Proposed Projects



Texarkana Water Utilities

801 Wood Street, P.O. Box 2008, Texarkana, Texas 75504

(903) 798-3800 Phone
711 TTY
(903) 791-0724 Fax

PROPOSED PROJECTS

July 14, 2023

Project #1 - Replace the 2" and 3" water mains along Dooley Ferry Road from Mandeville Road to Old Post Road with a 6" water main.

Project #2 - Replace the 12" water main along Highway 245 from East 9th Street to Tennessee Road and continuing along Tennessee Road with a 24" water main.

Project #3 – Replace the 6" water main along East Street from Boyd Road to Blackman Ferry Road and continuing south on Blackman Ferry Road to Old Blackman Ferry Road with a 12" water main.

Project #4 - Replace the Lakewood Standpipe at Manor Way with a 500,000 gallon Elevated Tank.

Project #5 - Replace 3,000 feet of 16" water main along Sugarhill Road.

Project #6 - Replace 3,000 feet of 36" water main along US Highway 71 North beginning at Sugarhill Road and running south.

Project #7 - Replace/Upgrade sewer trunk main along the Nix Creek Drainage Basin.

Project #8 - Extend water and sewer to the REDI site.

Project #9 – Upgrade the North Texarkana WWTP from 0.95 MGD to 2.0 MGD.

Project #10 - Install an Automatic Metering Infrastructure.

Project #11 - Loop Dead end water mains.

Project #12 - Extend Sewer to areas not served.

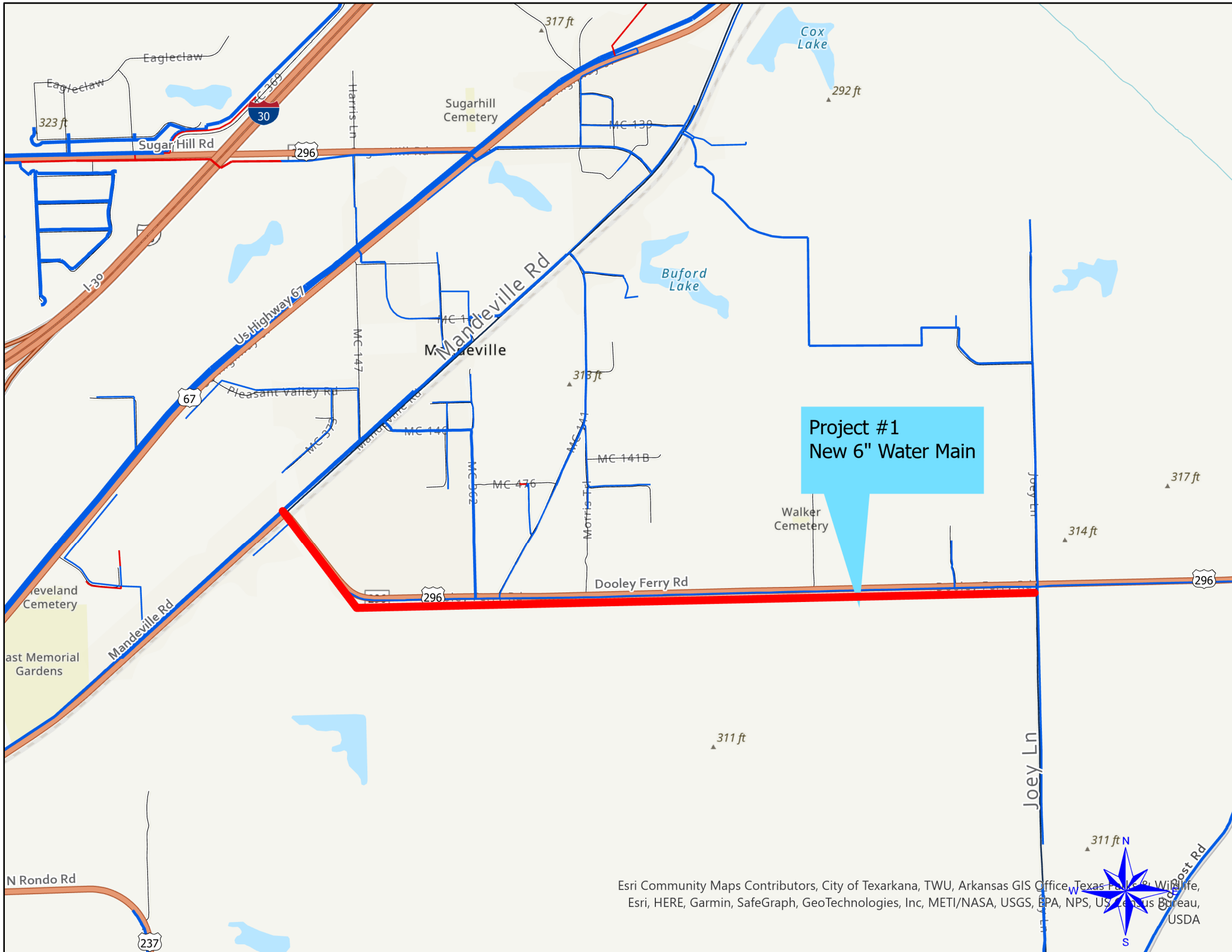
Project #13 - Construction cost to identify Lead water service lines.

Project #14 - Replace water mains under 6" in diameter.

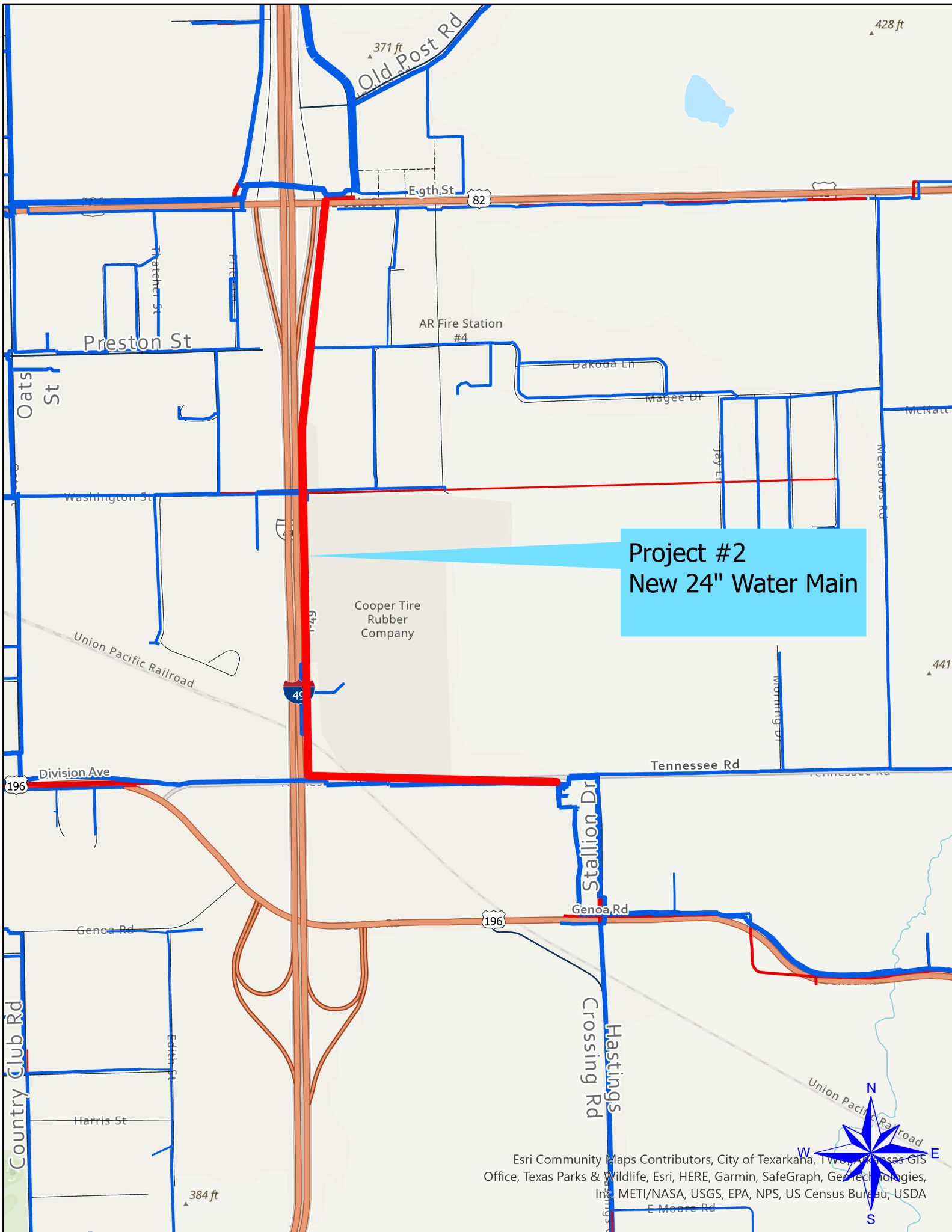
Project #15 - Replace aging water mains throughout system.

Project #16 - Replace aging sewer mains throughout system.

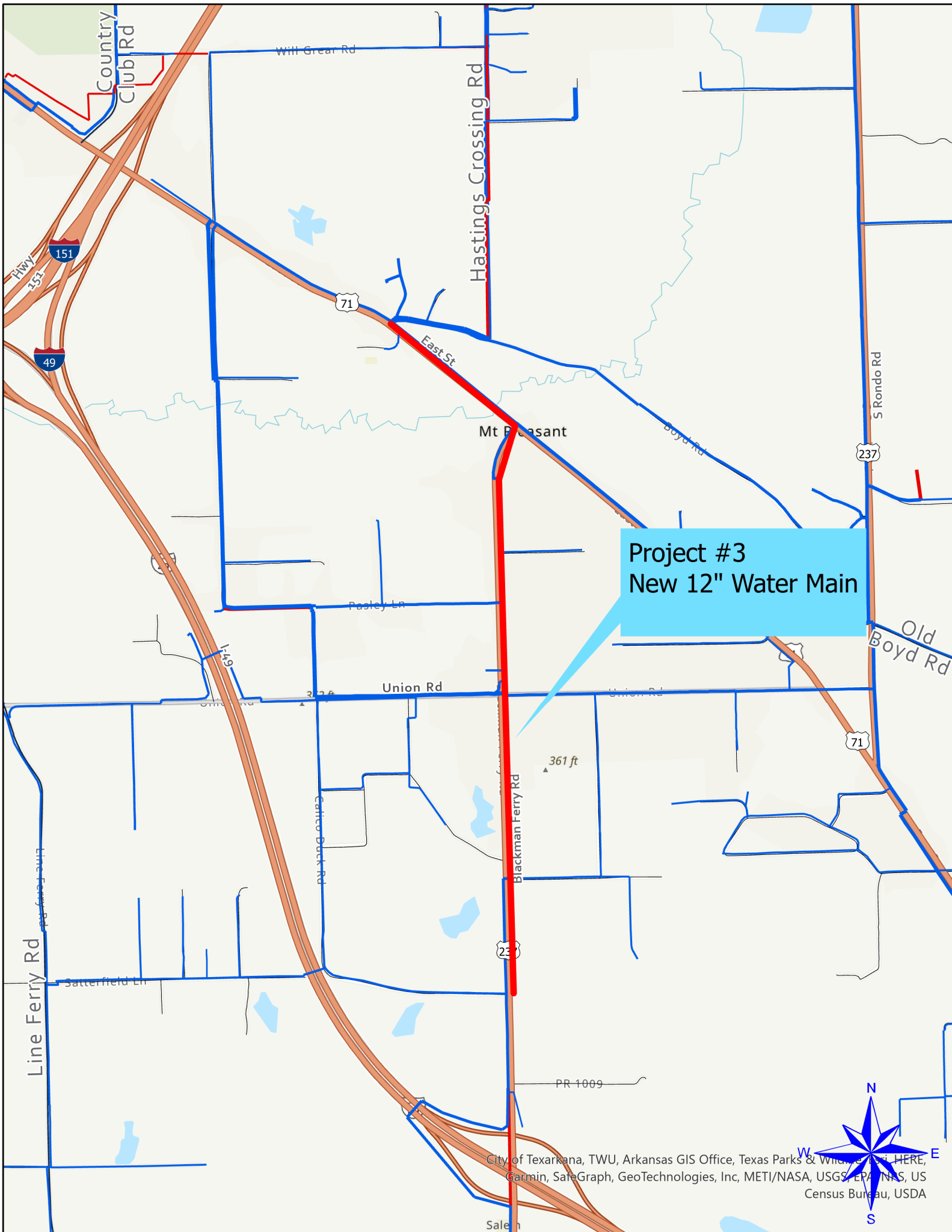
Project #17 - Install emergency generators at sewer lift stations.



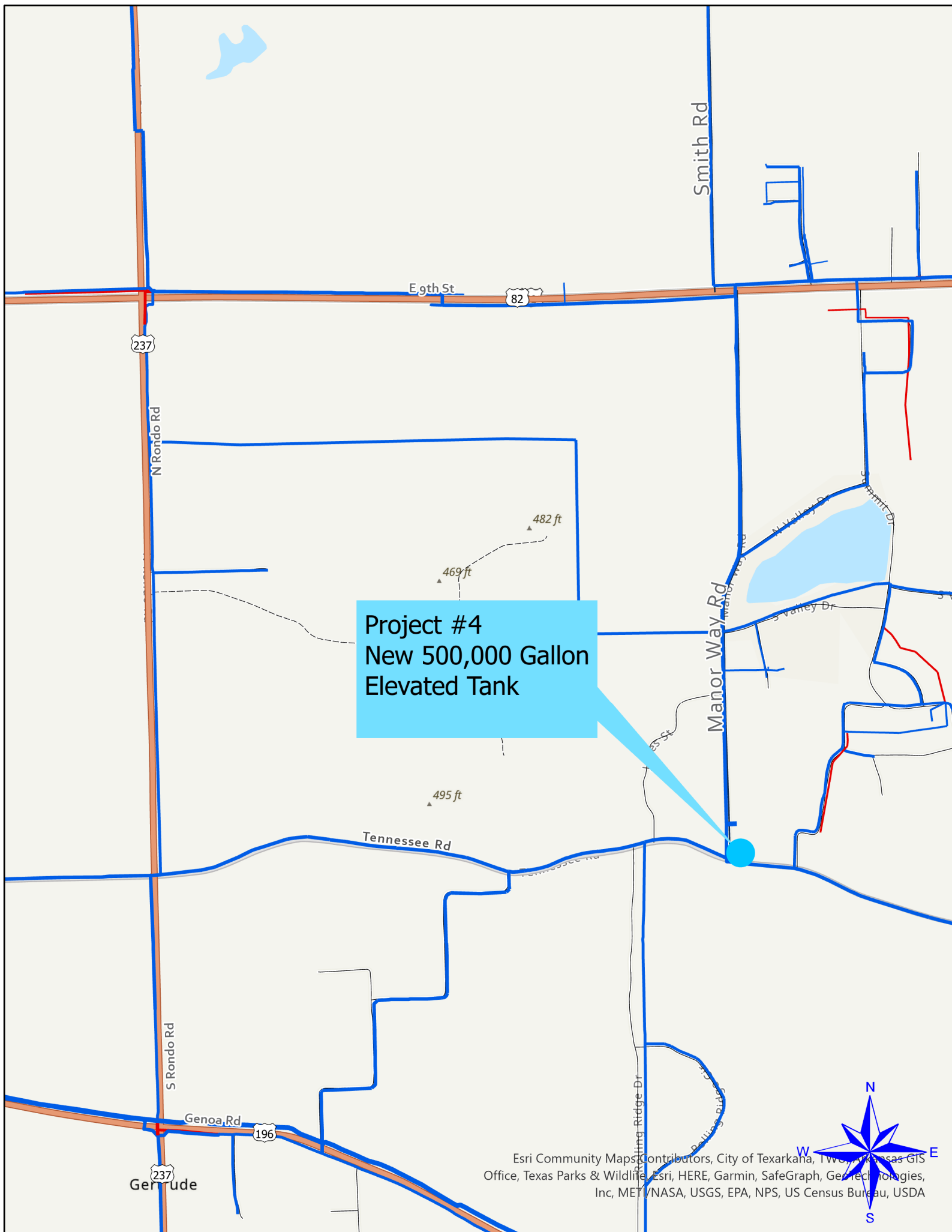
Project #1
New 6" Water Main



Project #2
New 24" Water Main



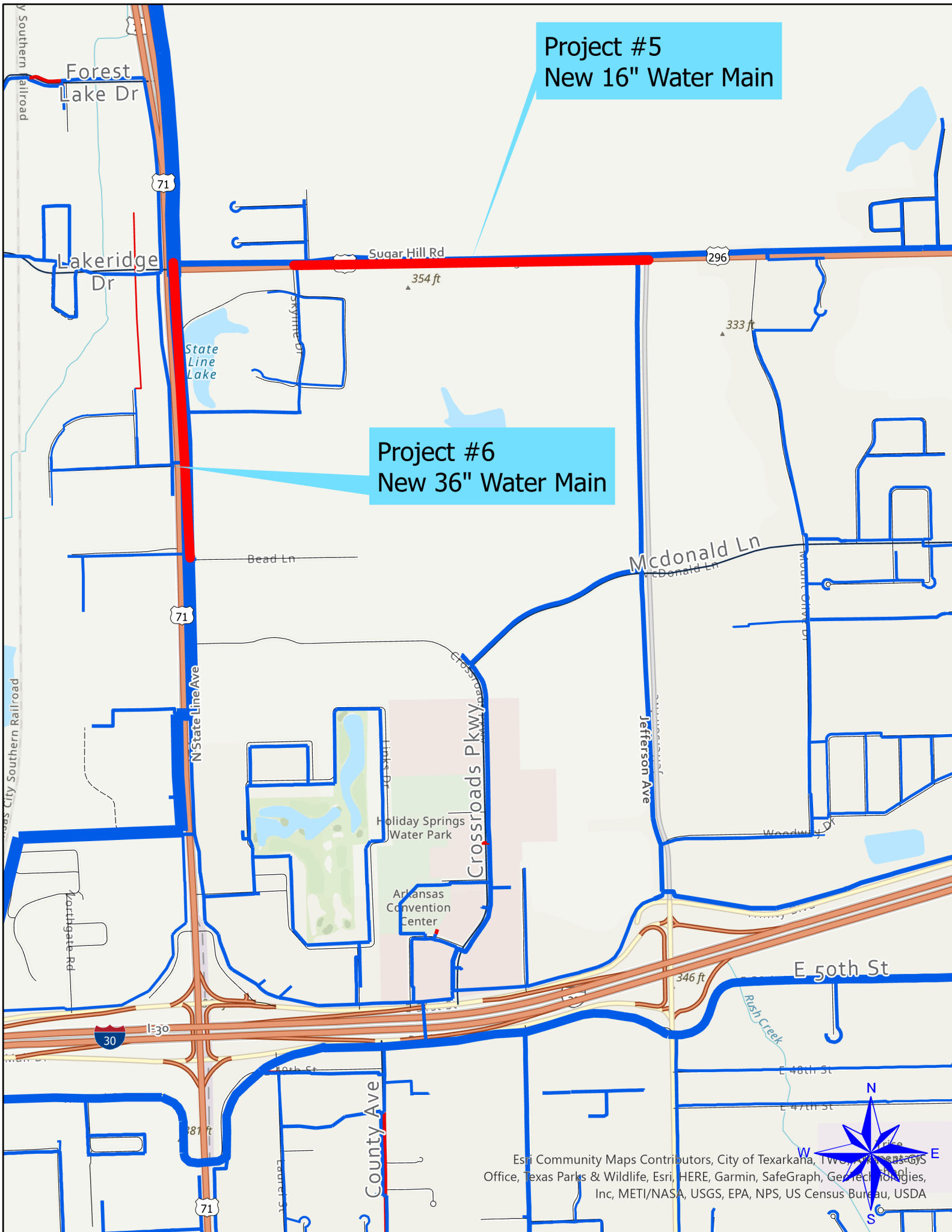
Project #3
New 12" Water Main

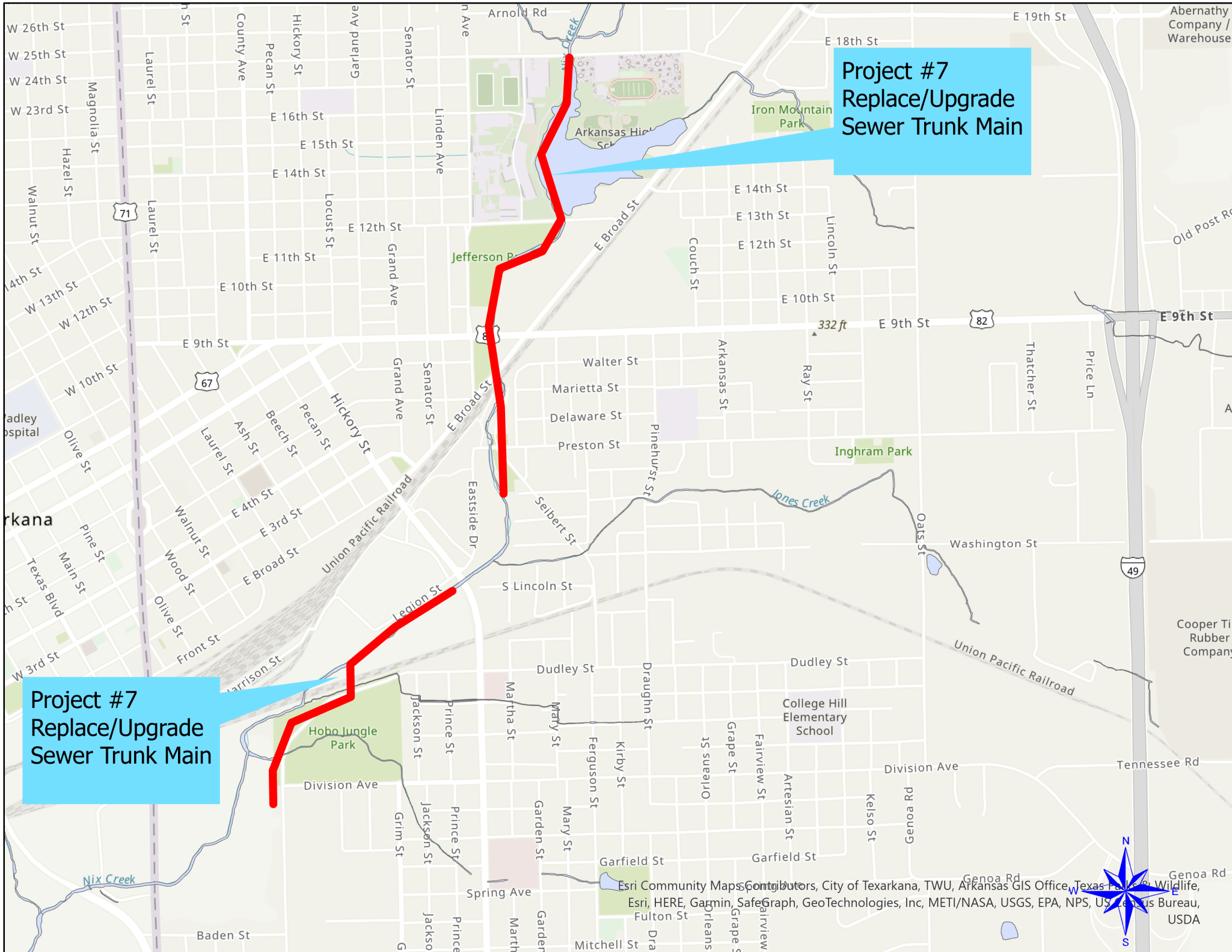


Esri Community Maps Contributors, City of Texarkana, TX, Arkansas GIS Office, Texas Parks & Wildlife, Esri, HERE, Garmin, SafeGraph, GeoTechnologies, Inc, MET/NASA, USGS, EPA, NPS, US Census Bureau, USDA

Project #5
New 16" Water Main

Project #6
New 36" Water Main

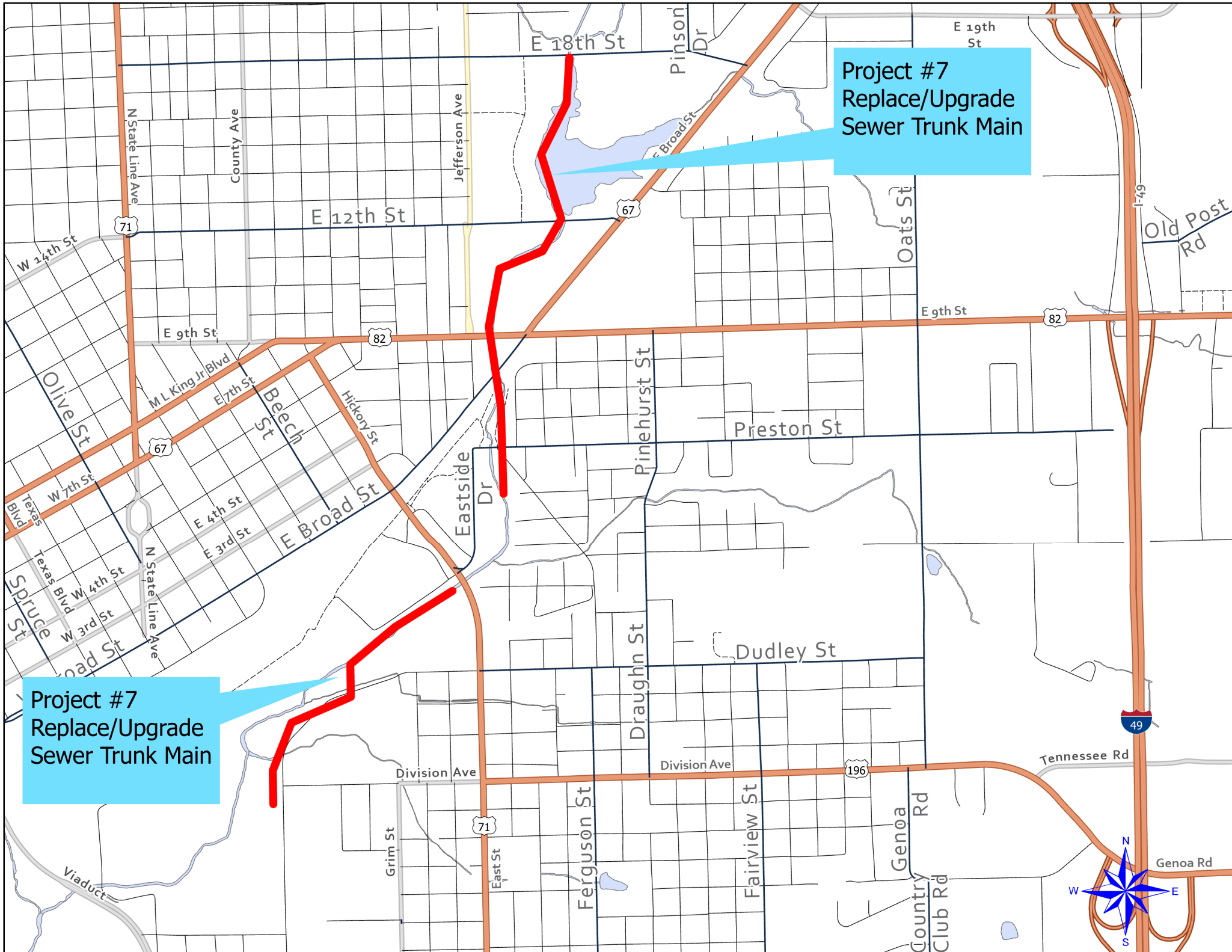




Project #7
Replace/Upgrade
Sewer Trunk Main

Project #7
Replace/Upgrade
Sewer Trunk Main





Project #7
Replace/Upgrade
Sewer Trunk Main

Project #7
Replace/Upgrade
Sewer Trunk Main