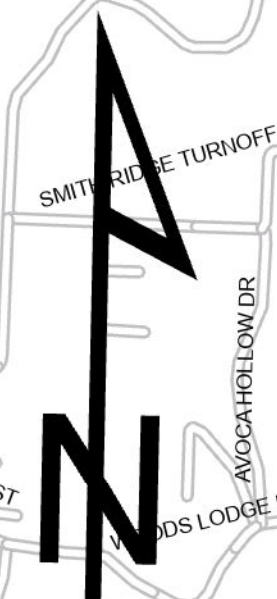
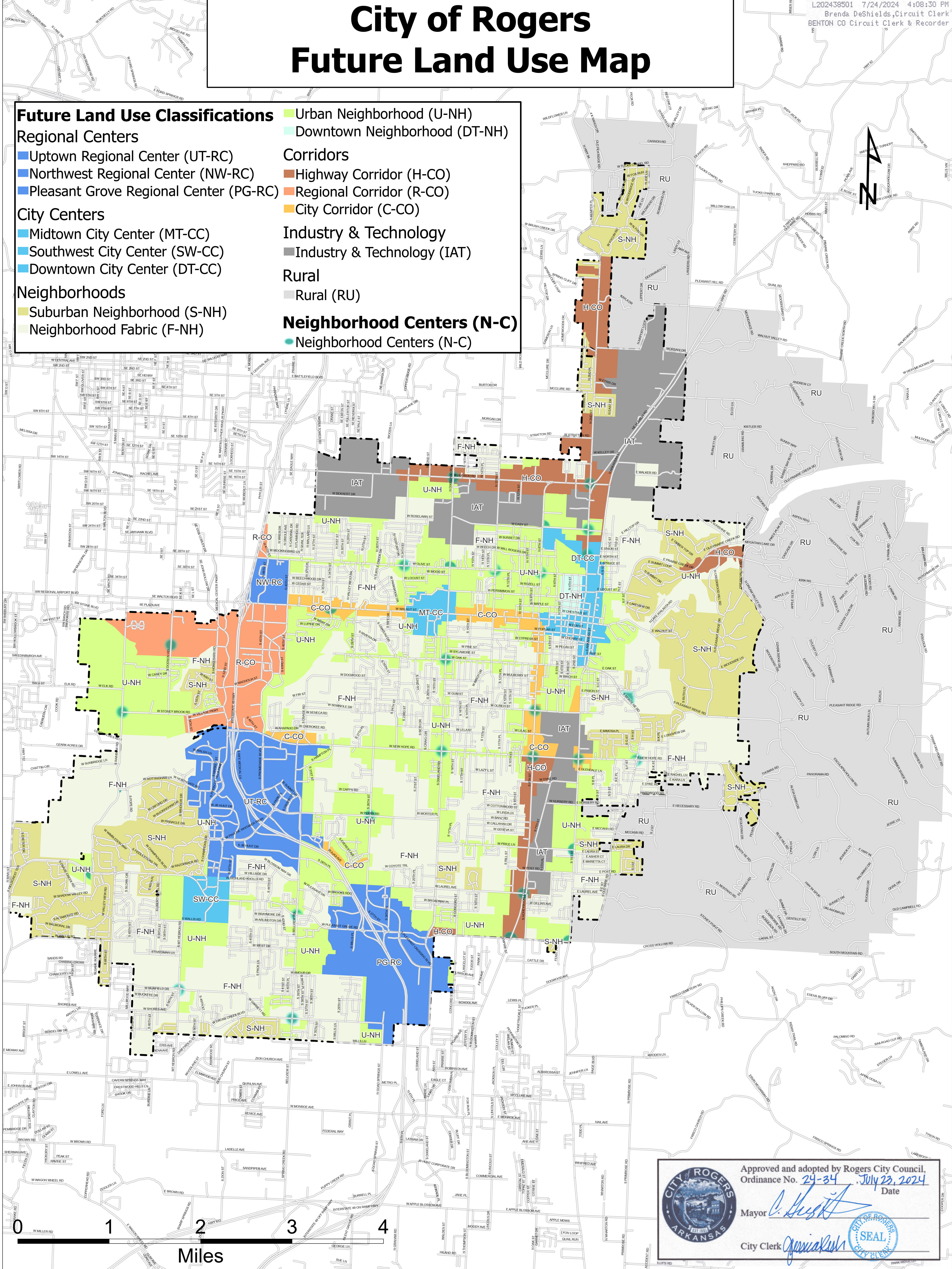


City of Rogers Future Land Use Map

- ### Future Land Use Classifications
- Urban Neighborhood (U-NH)
 - Downtown Neighborhood (DT-NH)
 - Regional Centers
 - Uptown Regional Center (UT-RC)
 - Northwest Regional Center (NW-RC)
 - Pleasant Grove Regional Center (PG-RC)
 - Corridors
 - Highway Corridor (H-CO)
 - Regional Corridor (R-CO)
 - City Corridor (C-CO)
 - Industry & Technology
 - Industry & Technology (IAT)
 - Rural
 - Rural (RU)
 - Neighborhoods
 - Suburban Neighborhood (S-NH)
 - Neighborhood Fabric (F-NH)
 - Neighborhood Centers (N-C)
 - Neighborhood Centers (N-C)



Approved and adopted by Rogers City Council,
Ordinance No. 24-34 July 23, 2024
Date

Mayor *C. Gresham*

City Clerk *J. Gresham*

